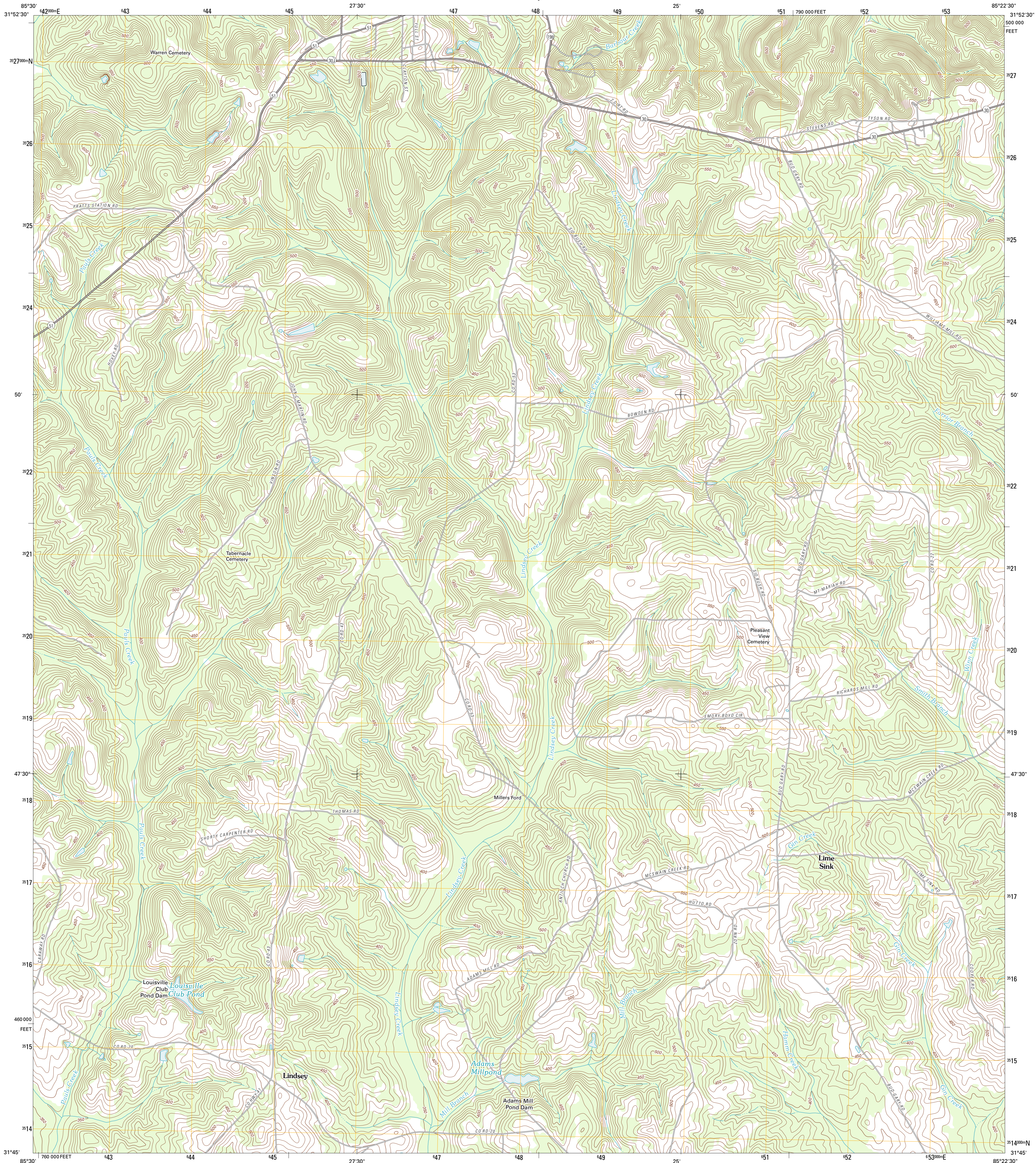




U.S. DEPARTMENT OF THE INTERIOR  
U. S. GEOLOGICAL SURVEY



CLAYTON SOUTH QUADRANGLE  
ALABAMA-BARBOR CO.  
7.5-MINUTE SERIES



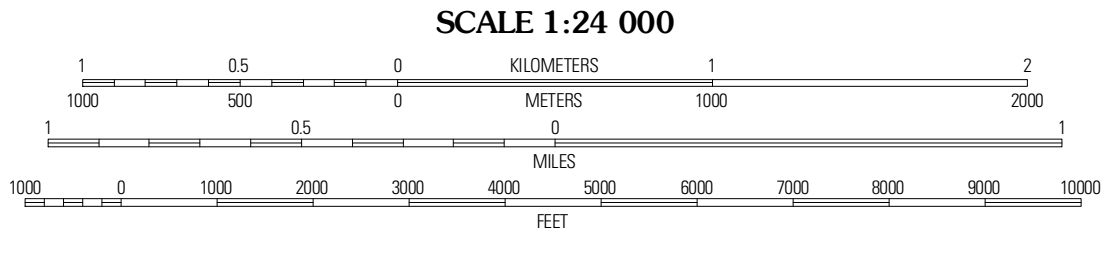
Produced by the United States Geological Survey  
North American Datum of 1983 (NAD83)  
World Geodetic System of 1984 (WGS84), Projection and  
1 000-meter grid: Universal Transverse Mercator, Zone 16R  
10 000-foot ticks: Alabama Coordinate System of 1983 (east  
zone)

Imagery.....NAP, October 2009  
Roads.....02/2006-2011 TomTom  
Names.....GNIS, 2011  
Hydrography.....National Hydrography Dataset, 2009  
Contours.....National Elevation Dataset, 2007  
Boundaries.....Census, IBWC, IBC, USGS, 1972 - 2010

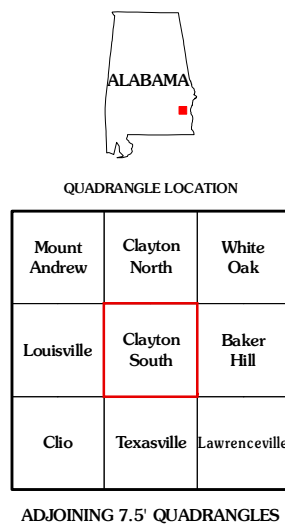
UTM GRID AND 2011 MAGNETIC NORTH  
DECLINATION AT CENTER OF SHEET

3° 31' 63 MILS  
0° 40' 15 MILS

U.S. National Grid  
100,000-m Square ID  
FA  
Grid Zone Designation  
16R



SCALE 1:24 000  
CONTOUR INTERVAL 10 FEET  
NORTH AMERICAN VERTICAL DATUM OF 1988  
This map was produced to conform with the  
National Geospatial Program US Topo Product Standard, 2011.  
A metadata file associated with this product is draft version 0.6.0



ROAD CLASSIFICATION

Interstate Route  
US Route  
Ramp

State Route  
Local Road  
4WD

Mount Andrew	Clayton North	White Oak
Louisville	Clayton South	Baker Hill
Clto	Texasville	Lawrenceville

CLAYTON SOUTH, AL  
2011