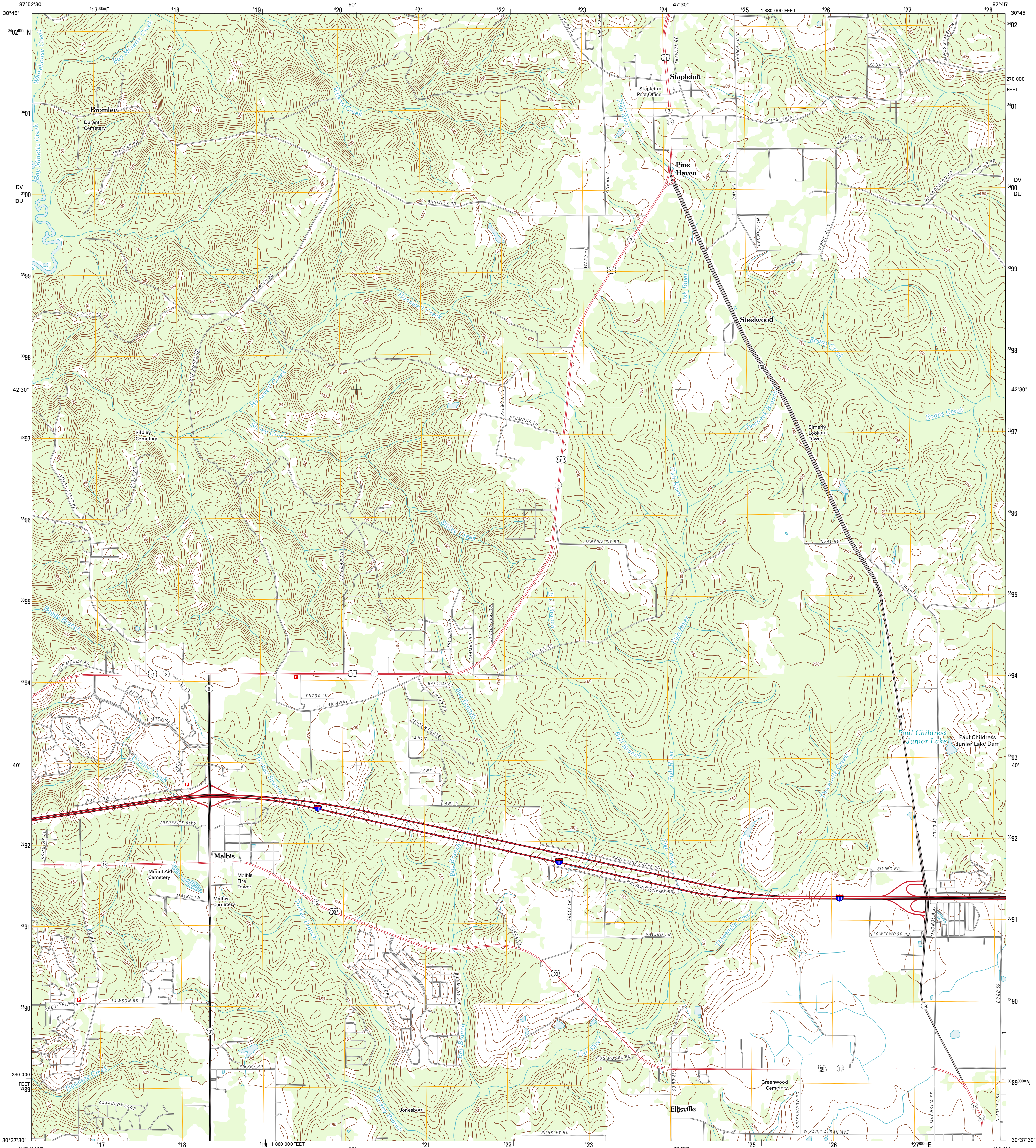




U.S. DEPARTMENT OF THE INTERIOR
U. S. GEOLOGICAL SURVEY



STAPLETON QUADRANGLE
ALABAMA-BALDWIN CO.
7.5-MINUTE SERIES

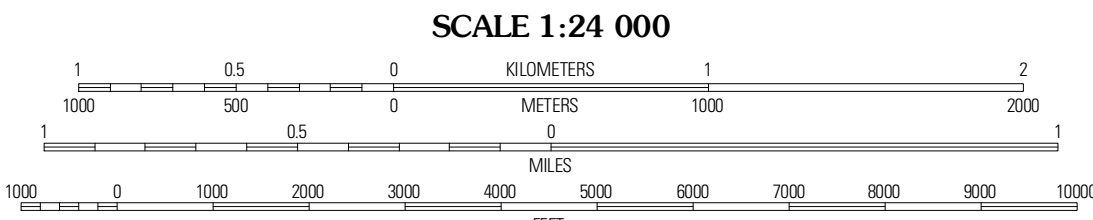


Produced by the United States Geological Survey
North American Datum of 1983 (NAD83)
World Geodetic System of 1984 (WGS84). Projection and
1 000-meter grid: Universal Transverse Mercator, Zone 16R
10 000-foot ticks: Alabama Coordinate System of 1983 (west
zone)

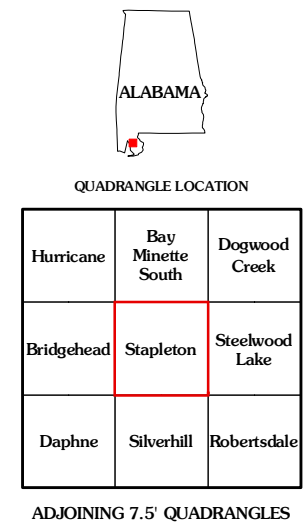
Imagery.....NAIP, June 2009
Roads.....©2006-2011 Terra
Names.....GNIS, 2011
Hydrography.....National Hydrography Dataset, 2009
Contours.....National Elevation Dataset, 2007
Boundaries.....Census, IBWC, IBC, USGS, 1972 - 2010

UTM GRID AND 2011 MAGNETIC NORTH
DECLINATION AT CENTER OF SHEET

| |
|-----------------------|
| U.S. National Grid |
| 100,000-m Square ID |
| DV |
| DU |
| Grid Zone Designation |
| 16R |



CONTOUR INTERVAL 10 FEET
NORTH AMERICAN VERTICAL DATUM OF 1988
This map was produced to conform with the
National Geospatial Program US Topo Product Standard, 2011.
A metadata file associated with this product is draft version 0.6.0



| ROAD CLASSIFICATION | | | |
|---------------------|-------------|----------|-----|
| Interstate Route | State Route | US Route | 4WD |
| US Route | State Route | US Route | 4WD |
| Ramp | State Route | US Route | 4WD |
| Interstate Route | State Route | US Route | 4WD |

STAPLETON, AL
2011