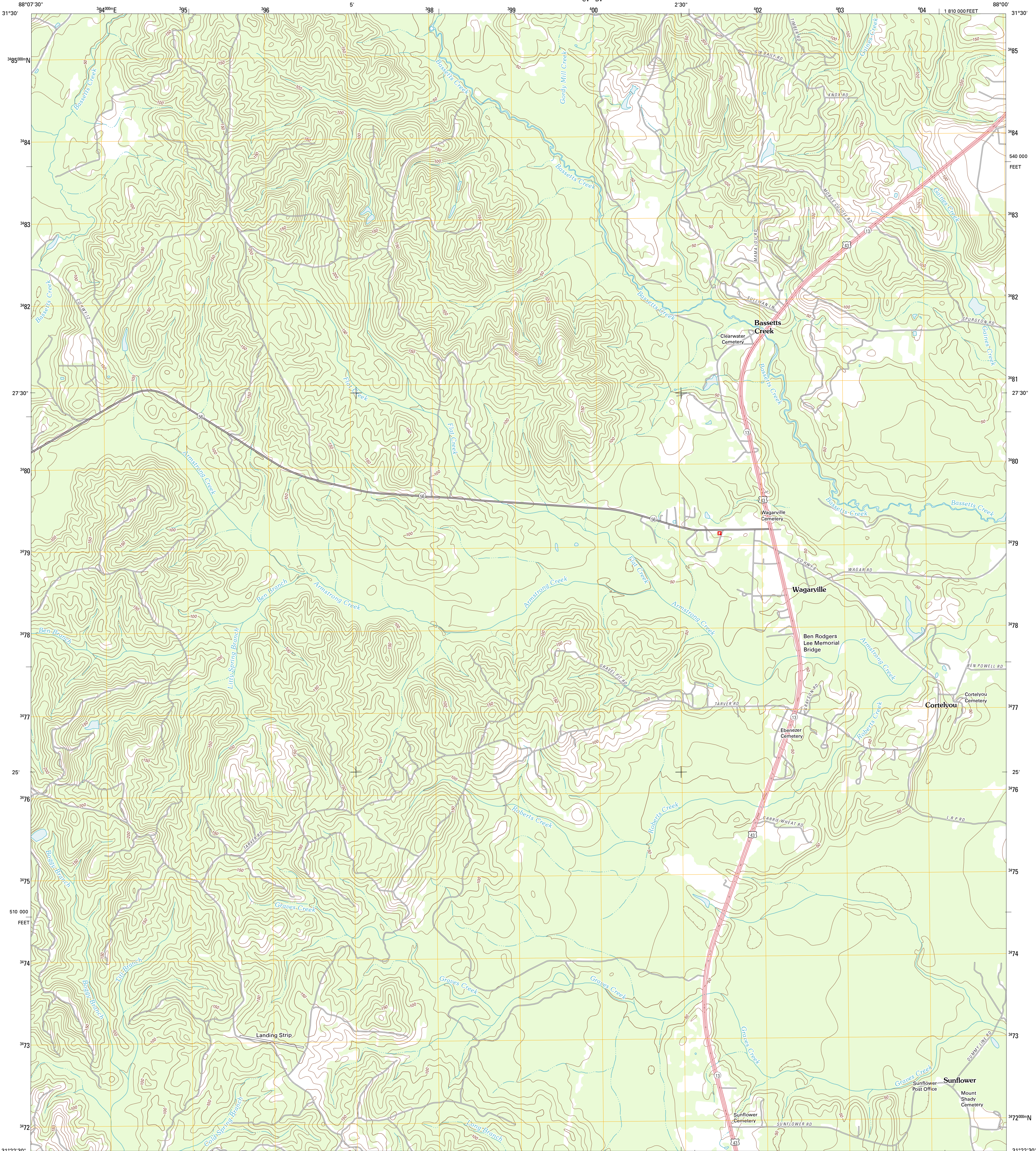




U.S. DEPARTMENT OF THE INTERIOR
U. S. GEOLOGICAL SURVEY



WAGARVILLE QUADRANGLE
ALABAMA-WASHINGTON CO.
7.5-MINUTE SERIES



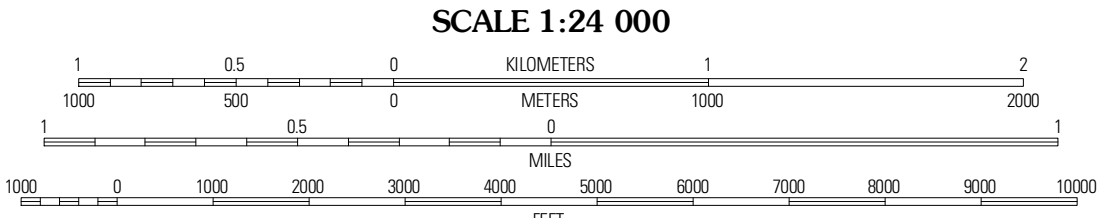
Produced by the United States Geological Survey
North American Datum of 1983 (NAD83)
World Geodetic System of 1984 (WGS84). Projection and
1 000-meter grid: Universal Transverse Mercator, Zone 16R
10 000-foot ticks: Alabama Coordinate System of 1983 (west
zone)

Imagery.....NAIP, June 2009 - August 2009
Roads.....©2006-2011 TomTom
Names.....GNIS, 2011
Hydrography.....National Hydrography Dataset, 2009
Contours.....National Elevation Dataset, 1999
Boundaries.....Census, IBWC, IBC, USGS, 1972 - 2010

UTM GRID AND 2011 MAGNETIC NORTH
DECLINATION AT CENTER OF SHEET

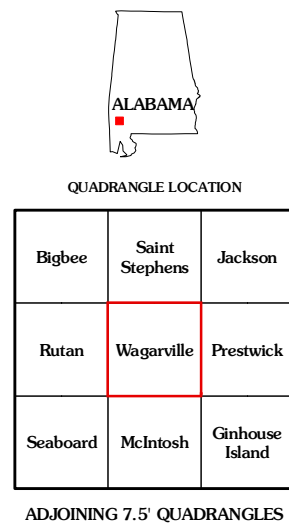
1° 38' 29" M
1° 38' 29" N
10 MILS

U.S. National Grid
100,000-m Square ID
100
CV DV
Grid Zone Designation
16R



CONTOUR INTERVAL 10 FEET
NORTH AMERICAN VERTICAL DATUM OF 1988

This map was produced to conform with the
National Geospatial Program US Topo Product Standard, 2011.
A metadata file associated with this product is draft version 0.6.0



ROAD CLASSIFICATION

Interstate Route
US Route
Ramp

State Route
Local Road
4WD

WAGARVILLE, AL
2011