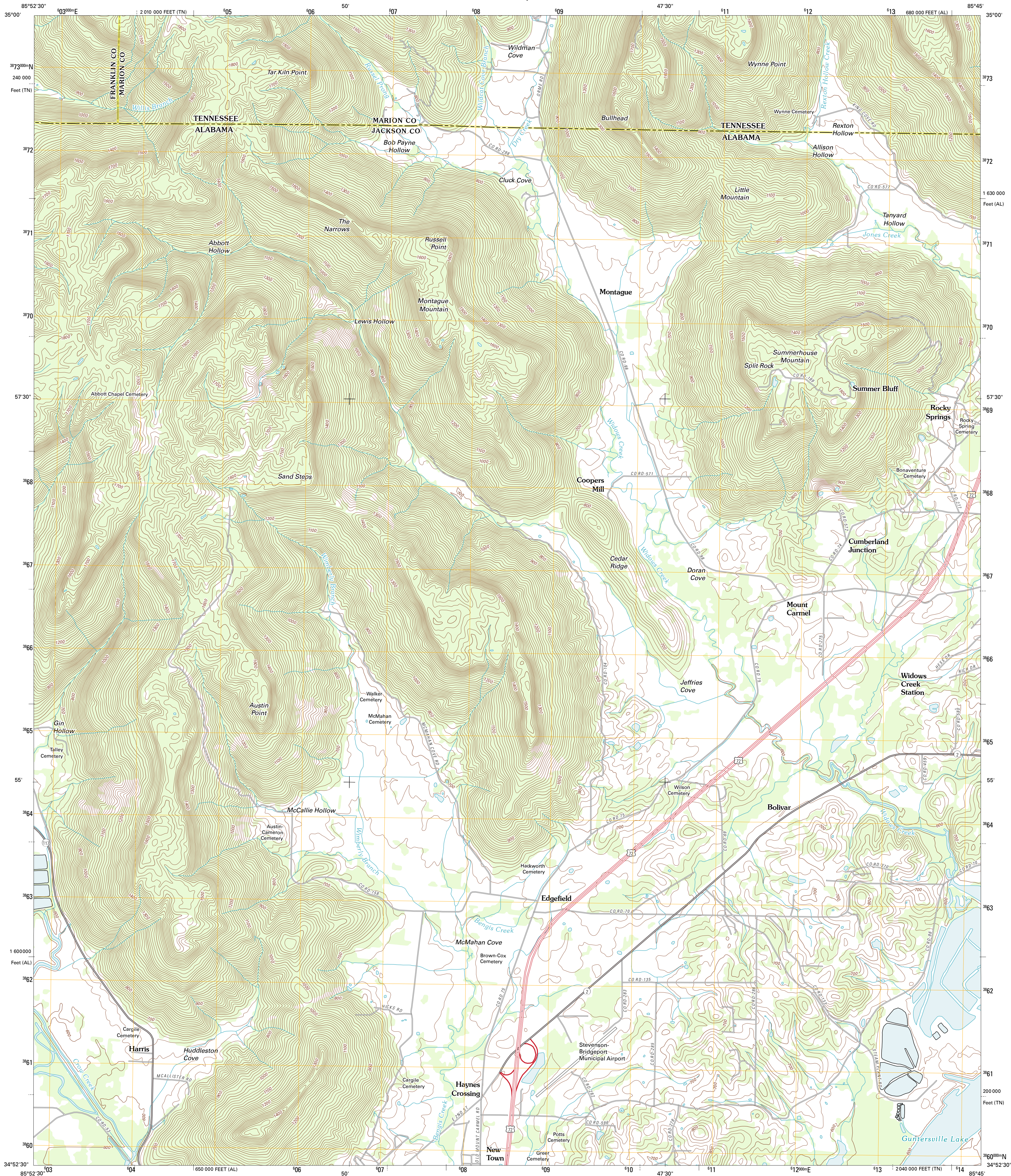




U.S. DEPARTMENT OF THE INTERIOR
U. S. GEOLOGICAL SURVEY



DORAN COVE QUADRANGLE
ALABAMA-TENNESSEE
7.5-MINUTE SERIES

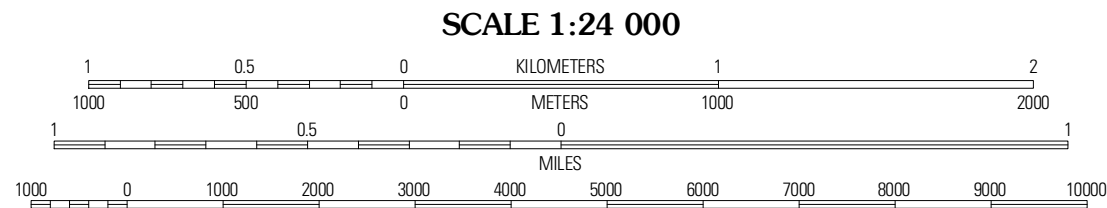


Produced by the United States Geological Survey
North American Datum of 1983 (NAD83)
World Geodetic System of 1984 (WGS84) Projection and
1 000-foot ticks: Alabama Coordinate System of 1983 (east
zone), Tennessee Coordinate System of 1983

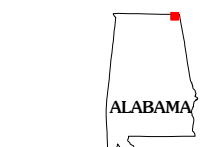
Imagery.....NAIP, July 2009
Roads.....2006-2011 TomTom
Names.....GNIS, 2011
Hydrography.....National Hydrography Dataset, 2009
Contours.....National Elevation Dataset, 2000
Boundaries.....Census, IBWC, IBC, USGS, 1972-2010

UTM GRID AND 2011 MAGNETIC NORTH
DECLINATION AT CENTER OF SHEET

U.S. National Grid
100,000-m Square ID
FD
Grid Zone Designation
18S



CONTOUR INTERVAL 20 FEET
NORTH AMERICAN VERTICAL DATUM OF 1988
This map was produced to conform with the
National Geospatial Program US Topo Product Standard, 2011.
A metadata file associated with this product is draft version 0.6.0



Sinking Cove	Orme	South Pittsburg
Eureka	Doran Cove	Bridgeport
Wannville	Stevenson	Flat Rock

ADJOINING 7.5' QUADRANGLES

ROAD CLASSIFICATION
Interstate Route
US Route
Ramp
State Route
Local Road
4WD

DORAN COVE, AL-TN
2011