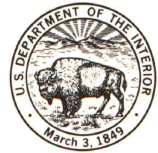


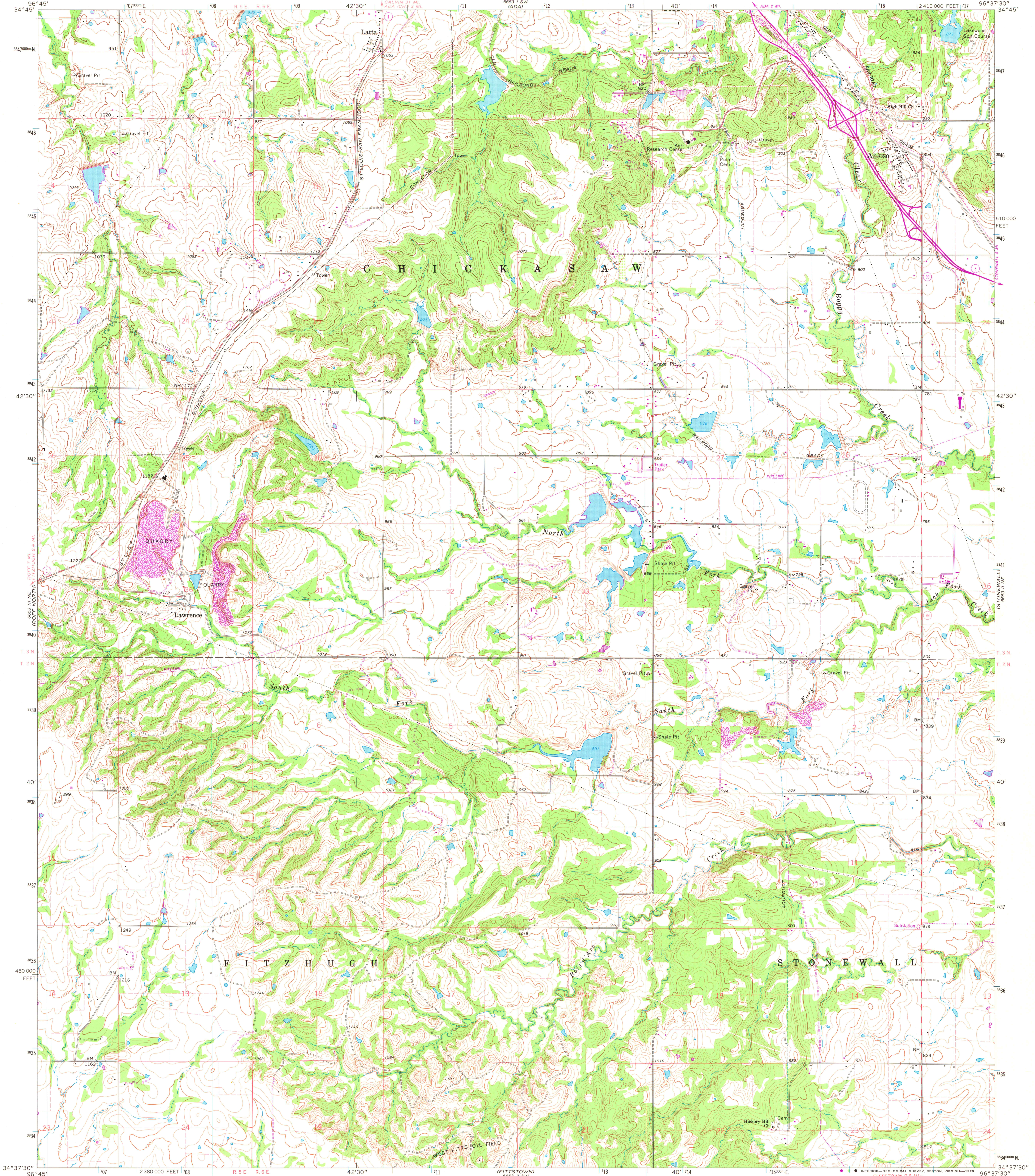
6653 11 SE
(P&AO 15)

UNITED STATES
DEPARTMENT OF THE INTERIOR
GEOLOGICAL SURVEY



AHLOSO QUADRANGLE
OKLAHOMA—PONTOTOC CO.
7.5 MINUTE SERIES (TOPOGRAPHIC)

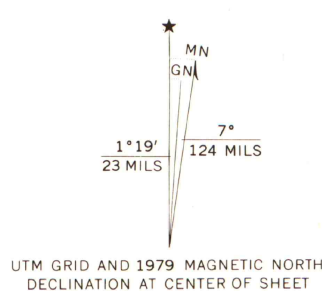
6653 11 SE
(P&AO 15)



6653 11 SE
(P&AO 15)

Mapped, edited, and published by the Geological Survey
Control by USGS and USC&GS
Topography by photogrammetric methods from aerial
photographs taken 1965. Field checked 1967
Polyconic projection. 1927 North American datum
10,000-foot grid based on Oklahoma coordinate system, south zone
1000-meter Universal Transverse Mercator grid ticks,
zone 14, shown in blue
Fine red dashed lines indicate selected fence and field lines where
generally visible on aerial photographs. This information is unchecked

Revisions shown in purple and woodland
compiled from aerial photographs taken 1976
and other source data. This information not
field checked. Map edited 1979



SCALE 1:24 000
CONTOUR INTERVAL 10 FEET
NATIONAL GEODETIC VERTICAL DATUM OF 1929

THIS MAP COMPLIES WITH NATIONAL MAP ACCURACY STANDARDS
FOR SALE BY U.S. GEOLOGICAL SURVEY, DENVER, COLORADO 80225, OR RESTON, VIRGINIA 22092
AND OKLAHOMA GEOLOGICAL SURVEY, NORMAN, OKLAHOMA 73069
A FOLDER DESCRIBING TOPOGRAPHIC MAPS AND SYMBOLS IS AVAILABLE ON REQUEST



MAP AND AIR PHOTO
LIBRARY
SEP 10 1980
University of Wisconsin
Madison

ROAD CLASSIFICATION
Heavy-duty ——— Light-duty ———
Medium-duty ——— Unimproved dirt ———
State Route

AHLOSO, OKLA.
N3437.5—W9637.5/7.5

1967
PHOTOREVISED 1979
AMS 6653 11 NW—SERIES V883

6653 11 SE
(P&AO 15)