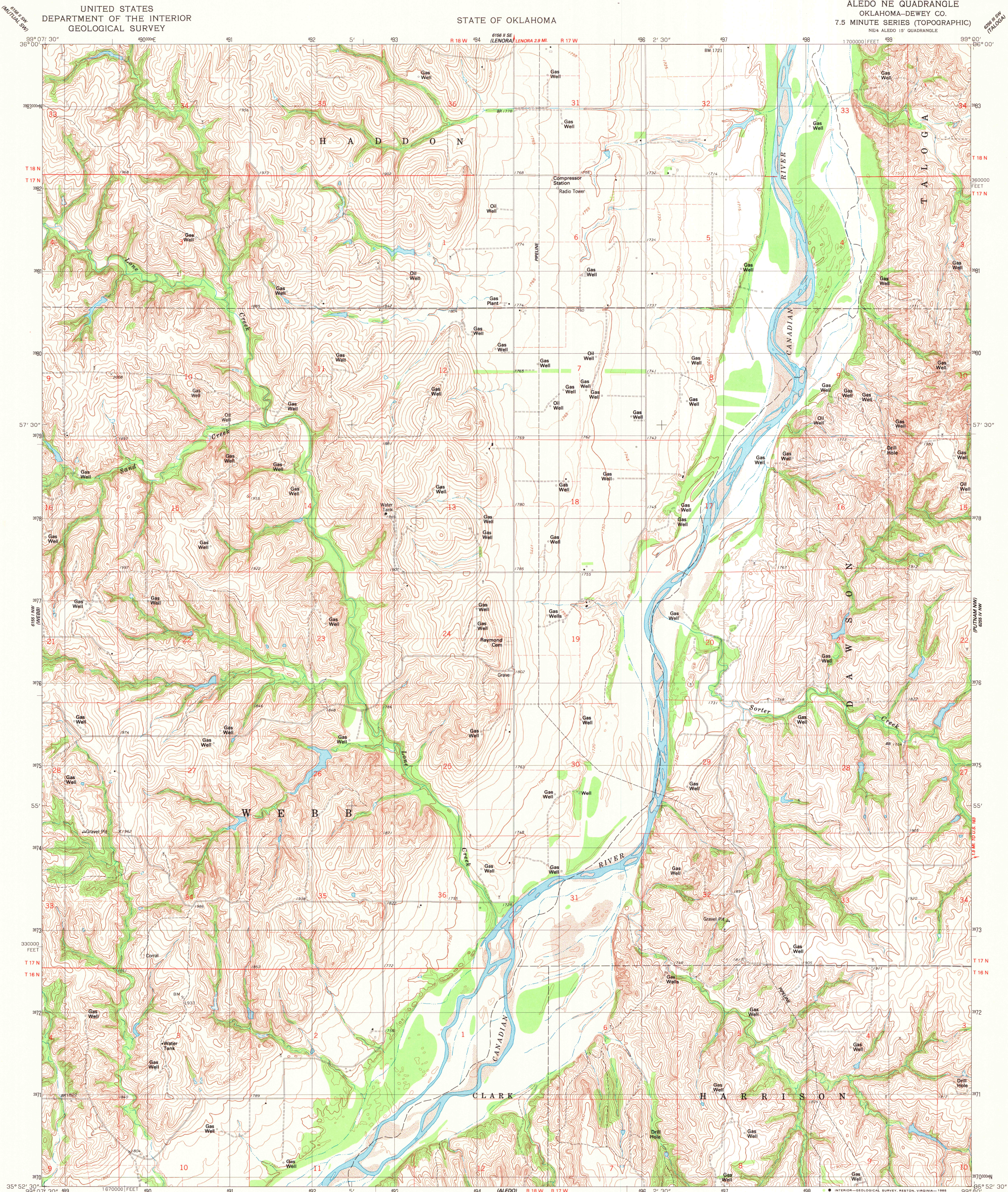


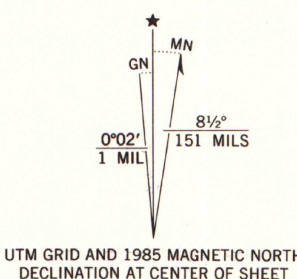
UNITED STATES
DEPARTMENT OF THE INTERIOR
GEOLOGICAL SURVEY

STATE OF OKLAHOMA

ALEDO NE QUADRANGLE
OKLAHOMA-DEWEY CO.
7.5 MINUTE SERIES (TOPOGRAPHIC)
NE 4 ALEDO 15' QUADRANGLE



Mapped, edited, and published by the Geological Survey
in cooperation with the Oklahoma Highway Department,
Oklahoma Water Resources Board, and Oklahoma State Soil
Conservation Board
Control by USGS and NOS/NOAA
Topography by photogrammetric methods from aerial photographs
taken 1959. Revised from aerial photographs taken 1963
Field checked 1984. Map edited 1985
Projection and 10,000-foot grid ticks: Oklahoma coordinate
system, north zone (Lambert conformal conic)
1000-meter Universal Transverse Mercator grid, zone 14
1927 North American Datum
To place on the predicted North American Datum 1983,
move the projection lines 2 meters south and
32 meters east as shown by dashed corner ticks
Fine red dashed lines indicate selected fence and field lines where
generally visible on aerial photographs. This information is unchecked



SCALE 1:24 000
1 000 0 1000 2000 3000 4000 5000 6000 7000 FEET
1 0 1 2 3 4 5 6 7 8 9 10 11 12 13 14 15 KILOMETER
CONTOUR INTERVAL 10 FEET
DOTTED LINES REPRESENT 5-FOOT CONTOURS
NATIONAL GEODETIC VERTICAL DATUM OF 1929

THIS MAP COMPLIES WITH NATIONAL MAP ACCURACY STANDARDS
FOR SALE BY U.S. GEOLOGICAL SURVEY, DENVER, COLORADO 80225, OR RESTON, VIRGINIA 22092
AND OKLAHOMA GEOLOGICAL SURVEY, NORMAN, OKLAHOMA 73069
A FOLDER DESCRIBING TOPOGRAPHIC MAPS AND SYMBOLS IS AVAILABLE ON REQUEST



ROAD CLASSIFICATION
Primary highway, hard surface
Secondary highway, hard surface
Light-duty road, hard or improved surface
Unimproved road
Interstate Route
U. S. Route
State Route

U.S. Regional
Repository Copy
DO NOT DISCARD

ALEDO NE, OKLA.
NE 4 ALEDO 15' QUADRANGLE
35099-H1-TF-024

1985
DMA 6151 I NE-SERIES V883

University of Wisconsin
Madison

DEC 20 1985