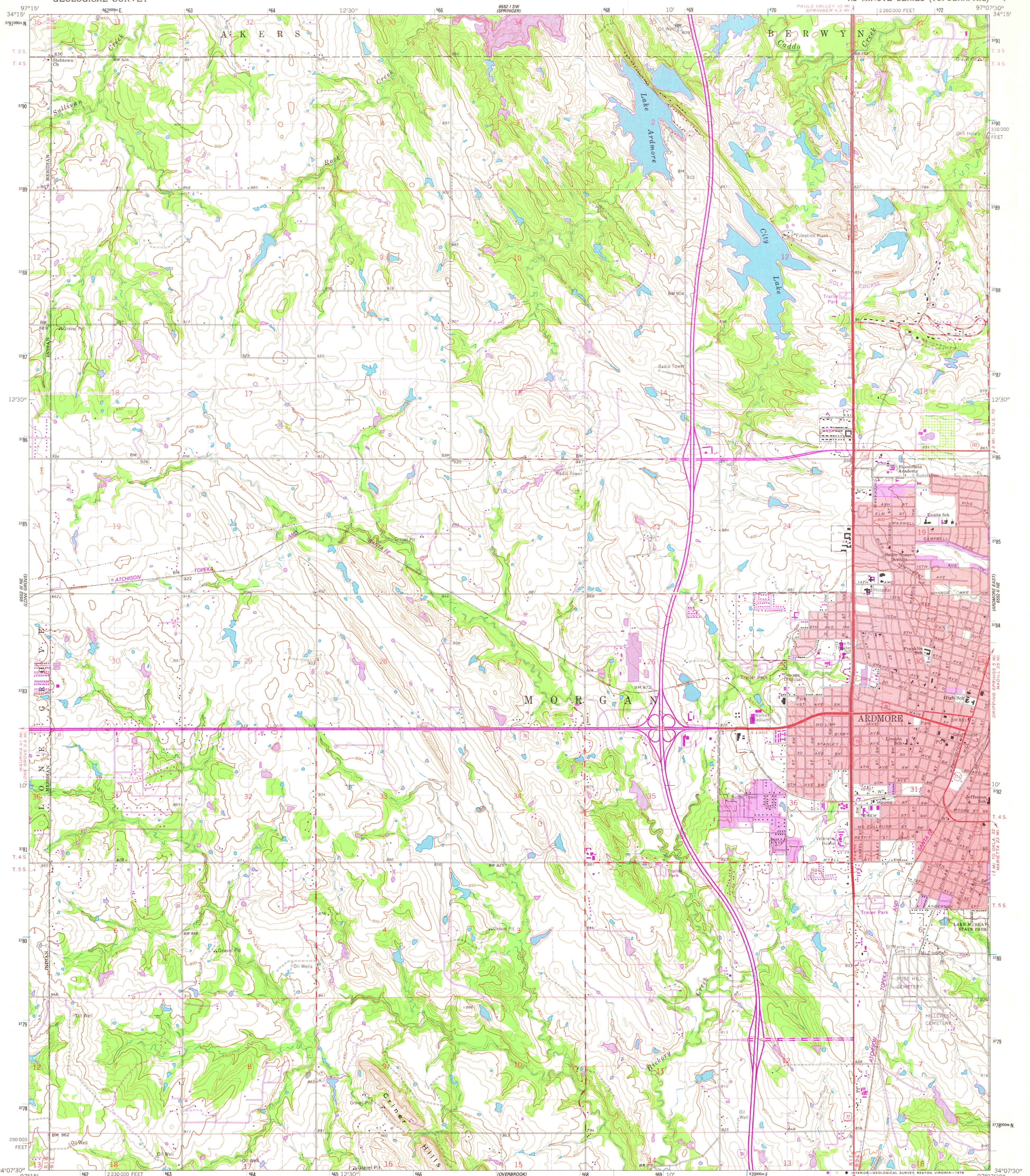


6552 N 5E
1660000 E

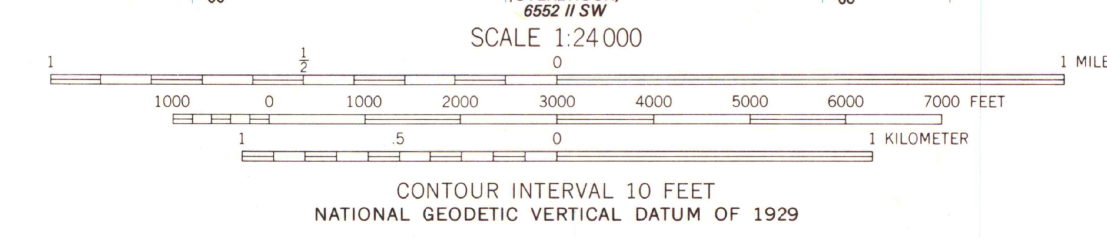
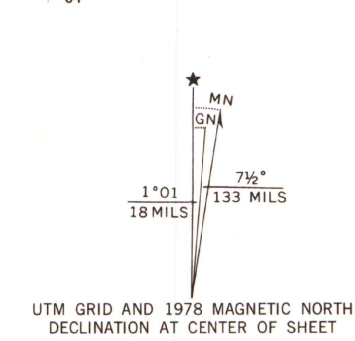
UNITED STATES
DEPARTMENT OF THE INTERIOR
GEOLOGICAL SURVEY

ARDMORE WEST QUADRANGLE
OKLAHOMA—CARTER CO.
7.5 MINUTE SERIES (TOPOGRAPHIC)

6552 N 5E
1660000 E



Mapped, edited, and published by the Geological Survey
Control by USGS, USC&GS, Oklahoma Geological Survey,
and Oklahoma Highway Department
Topography by photogrammetric methods from aerial
photographs taken 1962. Field checked 1964
Polyconic projection. 1927 North American datum
10,000-foot grid based on Oklahoma coordinate system, south zone
1000-meter Universal Transverse Mercator grid ticks,
zone 14, shown in blue
Red tint indicates area in which only landmark buildings are shown
Fine red dashed lines indicate selected fence and field lines where
generally visible on aerial photographs. This information is unchecked
Revisions shown in purple compiled from aerial photographs
taken 1976. This information not field checked
Map edited 1978
Purple tint indicates extension of urban areas



THIS MAP COMPLIES WITH NATIONAL MAP ACCURACY STANDARDS
FOR SALE BY U. S. GEOLOGICAL SURVEY, DENVER, COLORADO 80225, OR RESTON, VIRGINIA 22092
AND BY OKLAHOMA GEOLOGICAL SURVEY, NORMAN, OKLAHOMA 73069
A FOLDER DESCRIBING TOPOGRAPHIC MAPS IS AVAILABLE ON REQUEST



ROAD CLASSIFICATION

Heavy-duty	Light-duty
Medium-duty	Unimproved dirt
Interstate Route	U.S. Route
	State Route

MAP AND AIR PHOTO
LIBRARY

OCT 13 1973

ARDMORE WEST, OKLA.
N3407.5—W9707.5/7.5

1964
PHOTOREVISED 1978
AMS 6552 II NW—SERIES V883

University of Wisconsin
Madison