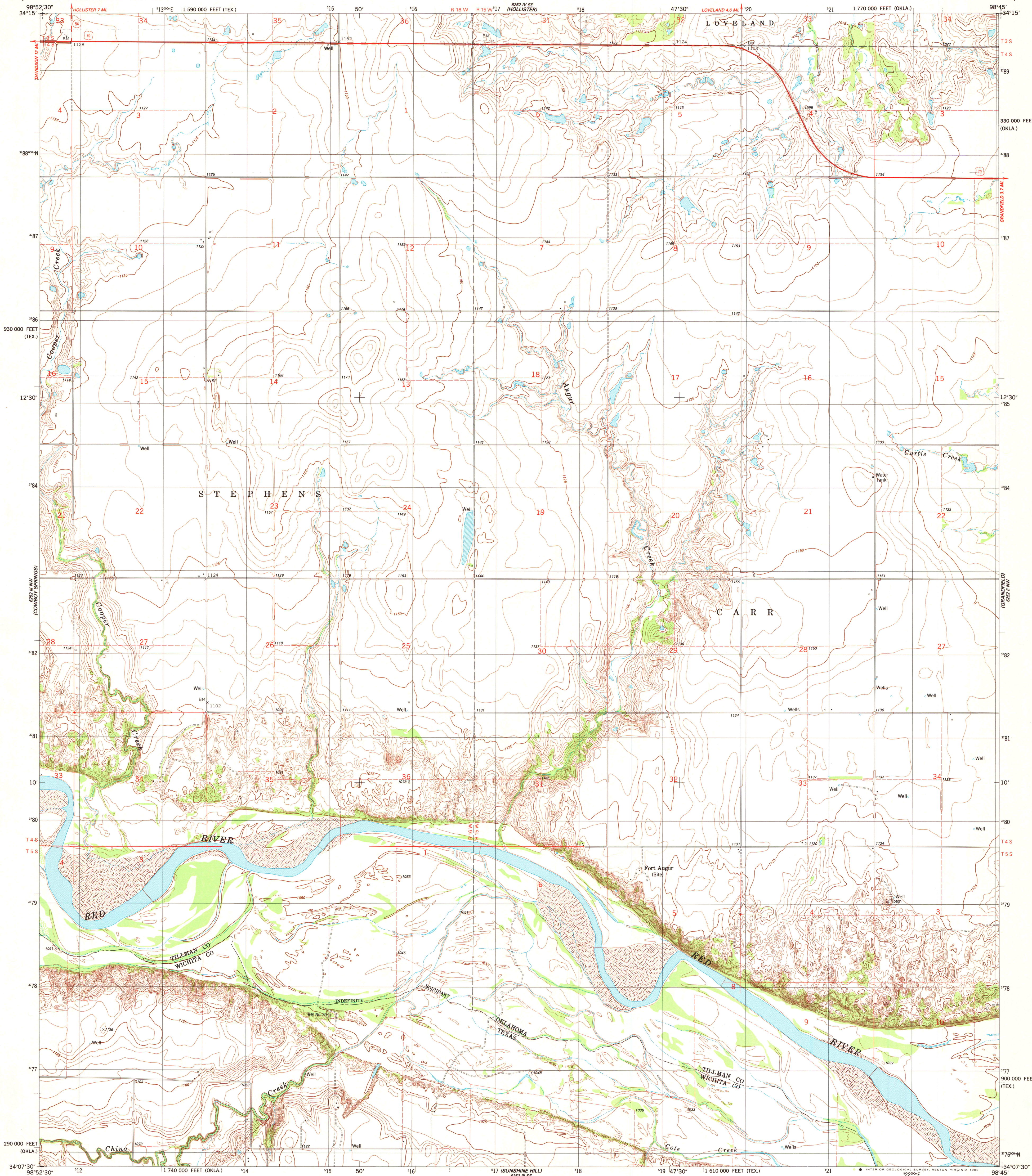


UNITED STATES
DEPARTMENT OF THE INTERIOR
GEOLOGICAL SURVEY

AUGUR CREEK QUADRANGLE
OKLAHOMA-TEXAS
7.5 MINUTE SERIES (TOPOGRAPHIC)
N74 ELECTRA 15' QUADRANGLE



Mapped, edited, and published by the Geological Survey
Control by USGS and NOS/NOAA

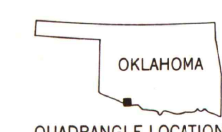
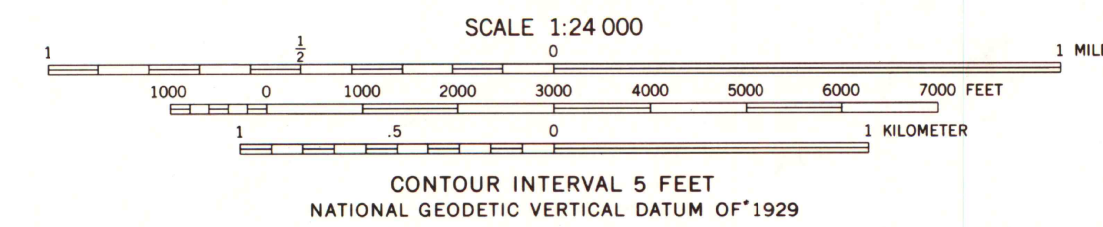
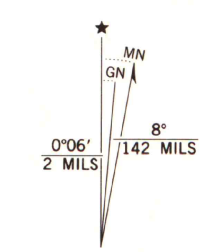
Topography by photogrammetric methods from aerial photographs
taken 1978. Field checked 1979. Map edited 1985

Projection: Oklahoma coordinate system, south zone
(Lambert conformal conic)

10,000-foot grid ticks based on Oklahoma coordinate system,
south zone and Texas coordinate system, north central zone
1000-meter Universal Transverse Mercator grid, zone 14
1927 North American Datum

To place on the predicted North American Datum 1983
move the projection lines 5 meters south and
32 meters east as shown by dashed corner ticks

Fine red dashed lines indicate selected fence lines



ROAD CLASSIFICATION	
Primary highway, hard surface	Light-duty road, hard or improved surface
Secondary highway, hard surface	Unimproved road
Interstate Route	U. S. Route
	State Route

AUGUR CREEK, OKLA.-TEX.
N74 ELECTRA 15' QUADRANGLE
34098-87-TF-024

1985
DMA 6252 III NE-SERIES V885

THIS MAP COMPLIES WITH NATIONAL MAP ACCURACY STANDARDS
FOR SALE BY U. S. GEOLOGICAL SURVEY, DENVER, COLORADO 80225, OR RESTON, VIRGINIA 22092
A FOLDER DESCRIBING TOPOGRAPHIC MAPS AND SYMBOLS IS AVAILABLE ON REQUEST

3498-224

U.S. Regional
Depository Copy
DO NOT DISCARD

A.H. ROBINSON
MAP LIBRARY
AUG 19 1985
University of Wisconsin
Madison