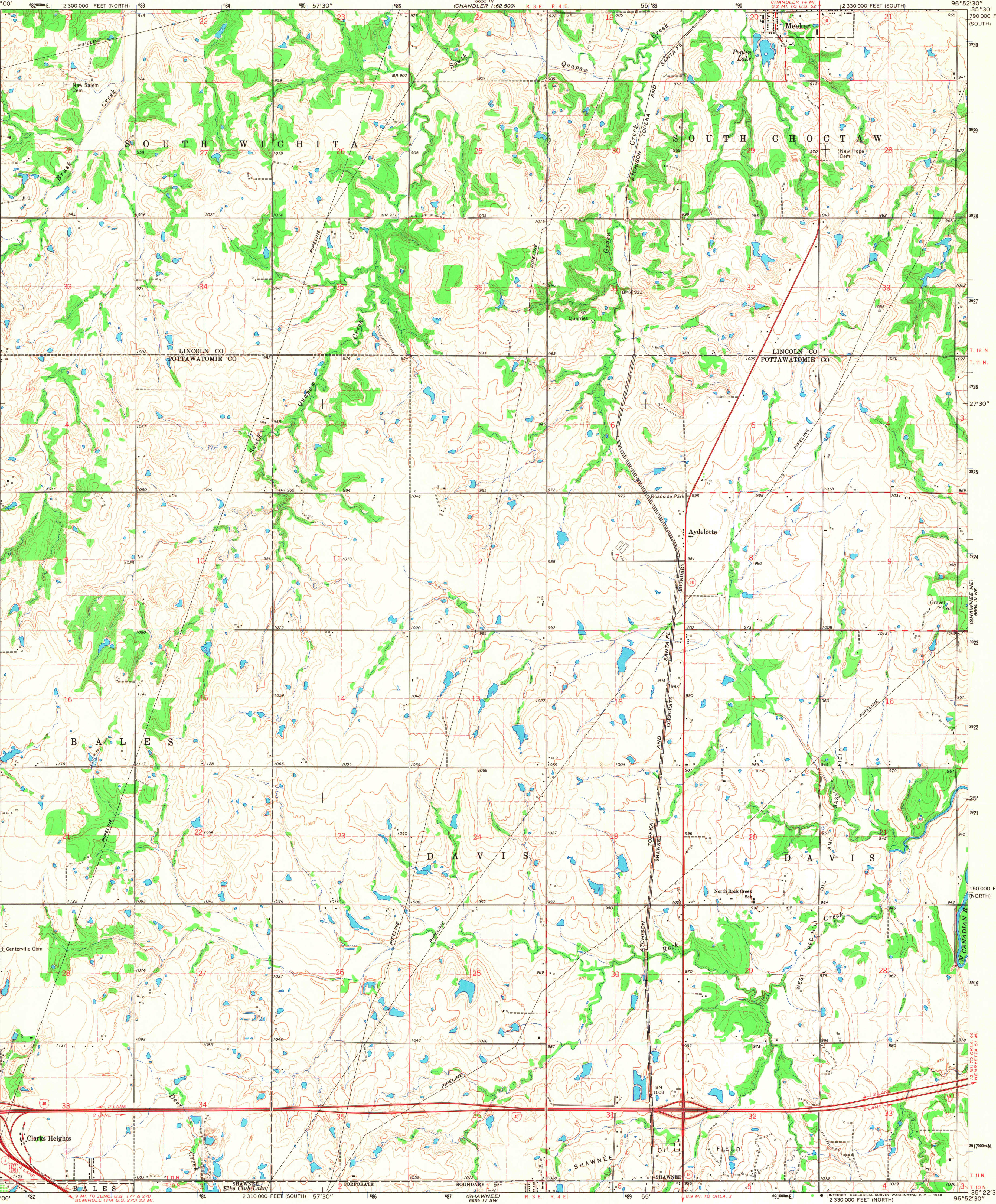
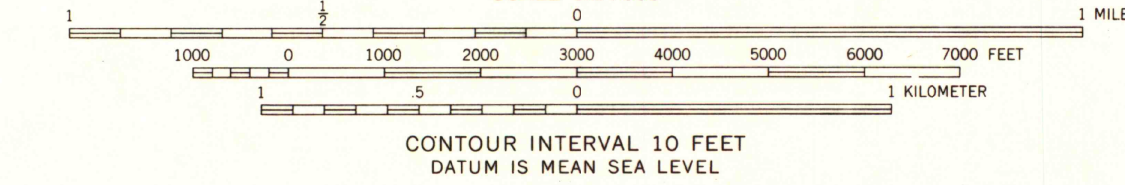
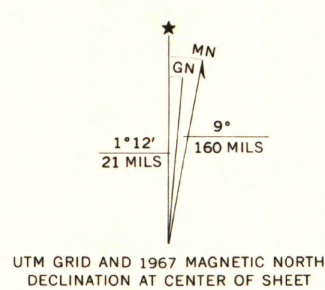


UNITED STATES
DEPARTMENT OF THE INTERIOR
GEOLOGICAL SURVEY

AYDELOTTE QUADRANGLE
OKLAHOMA
7.5 MINUTE SERIES (TOPOGRAPHIC)
NW/4 SHAWNEE 15' QUADRANGLE

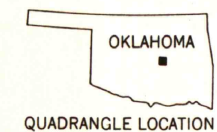


Maped, edited, and published by the Geological Survey
Control by USGS and USC&GS
Topography by photogrammetric methods from aerial
photographs taken 1964. Field checked 1967
Polyconic projection. 1927 North American datum
10,000-foot grids based on Oklahoma coordinate system,
south and north zones
1000-meter Universal Transverse Mercator grid ticks,
zone 14, shown in blue
Fine red dashed lines indicate selected fence and field lines where
generally visible on aerial photographs. This information is unchecked



MAP AND AIR PHOTO LIBRARY
University of Wisconsin

ROAD CLASSIFICATION
Heavy-duty ——— Light-duty ———
Medium-duty ——— Unimproved dirt ———
Interstate Route U.S. Route State Route



AYDELOTTE, OKLA.
NW/4 SHAWNEE 15' QUADRANGLE
N3522.5—W9652.5/7.5

1967

AMS 6554 IV NW-SERIES V883