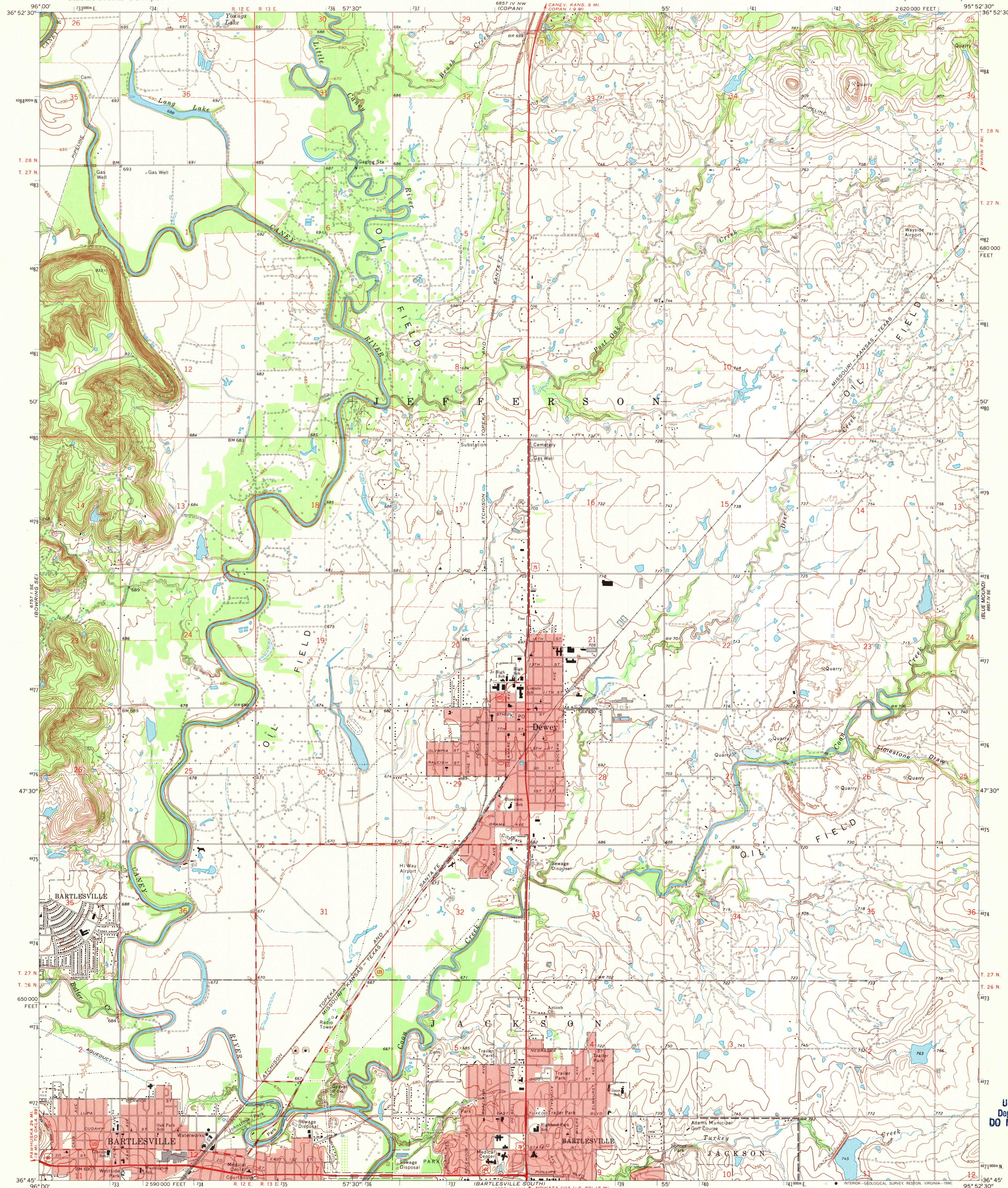


UNITED STATES
DEPARTMENT OF THE INTERIOR
GEOLOGICAL SURVEY

BARTLESVILLE NORTH QUADRANGLE
OKLAHOMA—WASHINGTON CO.
7.5 MINUTE SERIES (TOPOGRAPHIC)



U.S. Regional
Depository Copy
DO NOT DISCARD

Mapped, edited, and published by the Geological Survey

Control by USGS and USC&GS

Topography by photogrammetric methods from aerial
photographs taken 1971. Field checked 1971

Polyconic projection. 1927 North American datum
10,000-foot grid based on Oklahoma coordinate system, north zone
1000-meter Universal Transverse Mercator grid ticks,
zone 15, shown in blue

Red tint indicates areas in which only landmark buildings are shown

Fine red dashed lines indicate selected fence and field lines where
generally visible on aerial photographs. This information is unchecked

To place on the predicted North American Datum 1983
move the projection lines 2 meters south and
24 meters east as shown by dashed corner ticks

Map photorevised 1980
No major culture or drainage changes observed

THIS MAP COMPLIES WITH NATIONAL MAP ACCURACY STANDARDS
FOR SALE BY U.S. GEOLOGICAL SURVEY, DENVER, COLORADO 80225, OR RESTON, VIRGINIA 22092
AND OKLAHOMA GEOLOGICAL SURVEY, NORMAN, OKLAHOMA 73069
A FOLDER DESCRIBING TOPOGRAPHIC MAPS AND SYMBOLS IS AVAILABLE ON REQUEST

ROAD CLASSIFICATION
Primary highway, hard surface
Secondary highway, hard surface
Unimproved road
Interstate Route
U. S. Route
State Route

BARTLESVILLE NORTH, OKLA.
36095-68-1F-024

1971
PHOTOINSPECTED 1980
DMA 6857 IV SW—SERIES V883

A.H. ROBINSON
MAP LIBRARY
JUL - 9 1990
University of Wisconsin
Madison