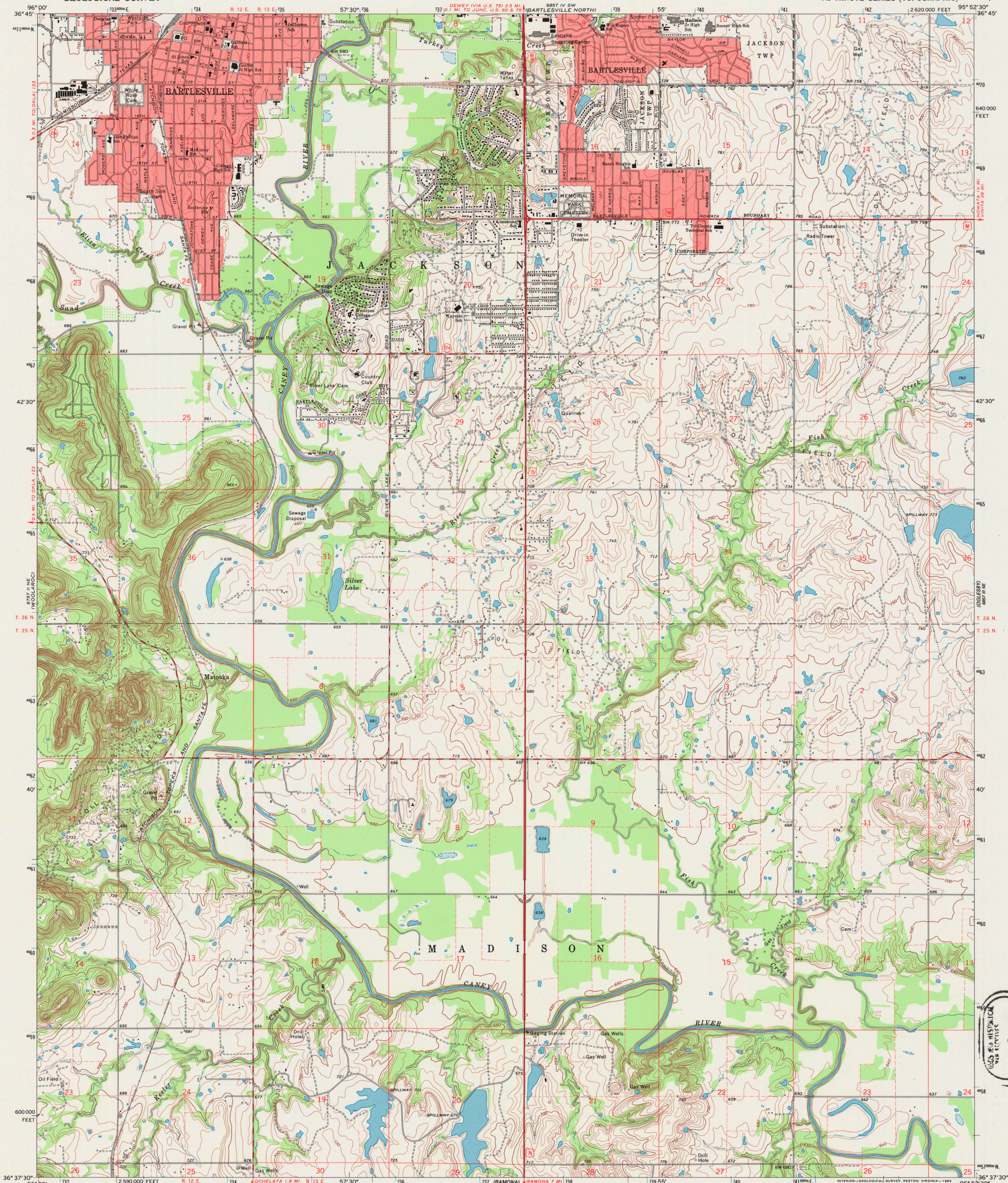


UNITED STATES  
DEPARTMENT OF THE INTERIOR  
GEOLOGICAL SURVEY

BARTLESVILLE SOUTH QUADRANGLE  
OKLAHOMA—WASHINGTON CO.  
7.5 MINUTE SERIES (TOPOGRAPHIC)



Mapped, edited, and published by the Geological Survey  
Control by USGS and USC&GS  
Topography by photogrammetric methods from aerial  
photographs taken 1971. Field checked 1971  
Polyconic projection. 1927 North American datum  
10,000-foot grid based on Oklahoma coordinate system, north zone  
1000-meter Universal Transverse Mercator grid ticks,  
zone 15, shown in blue  
To place on the predicted North American Datum 1983  
move the projection lines 2 meters south and  
23 meters east as shown by dashed corner ticks  
Fine red dashed lines indicate selected fence and field lines where  
generally visible on aerial photographs. This information is unchecked  
Map photoinspected 1980  
No major culture or drainage changes observed

Red tint indicates areas in which only landmark buildings are shown

THIS MAP COMPLIES WITH NATIONAL MAP ACCURACY STANDARDS  
FOR SALE BY U. S. GEOLOGICAL SURVEY, DENVER, COLORADO 80225, OR RESTON, VIRGINIA 22092  
AND BY THE OKLAHOMA GEOLOGICAL SURVEY, NORMAN, OKLAHOMA 73069  
A FOLDER DESCRIBING TOPOGRAPHIC MAPS AND SYMBOLS IS AVAILABLE ON REQUEST

ROAD CLASSIFICATION  
Primary highway, hard surface. Light-duty road, hard or improved surface.  
Secondary highway, hard surface. Unimproved road.  
Interstate Route. U. S. Route. State Route.

BARTLESVILLE SOUTH, OKLA.  
N3637.5—W9552.5/7.5

1971  
PHOTOINSPECTED 1980  
AMS 6857 III NW—SERIES V883

U.S. GEOLOGICAL SURVEY  
JUL 3 1990  
RECEIVED FILE COPY

ISBN 0-607-42881-0  
9 780607 428810