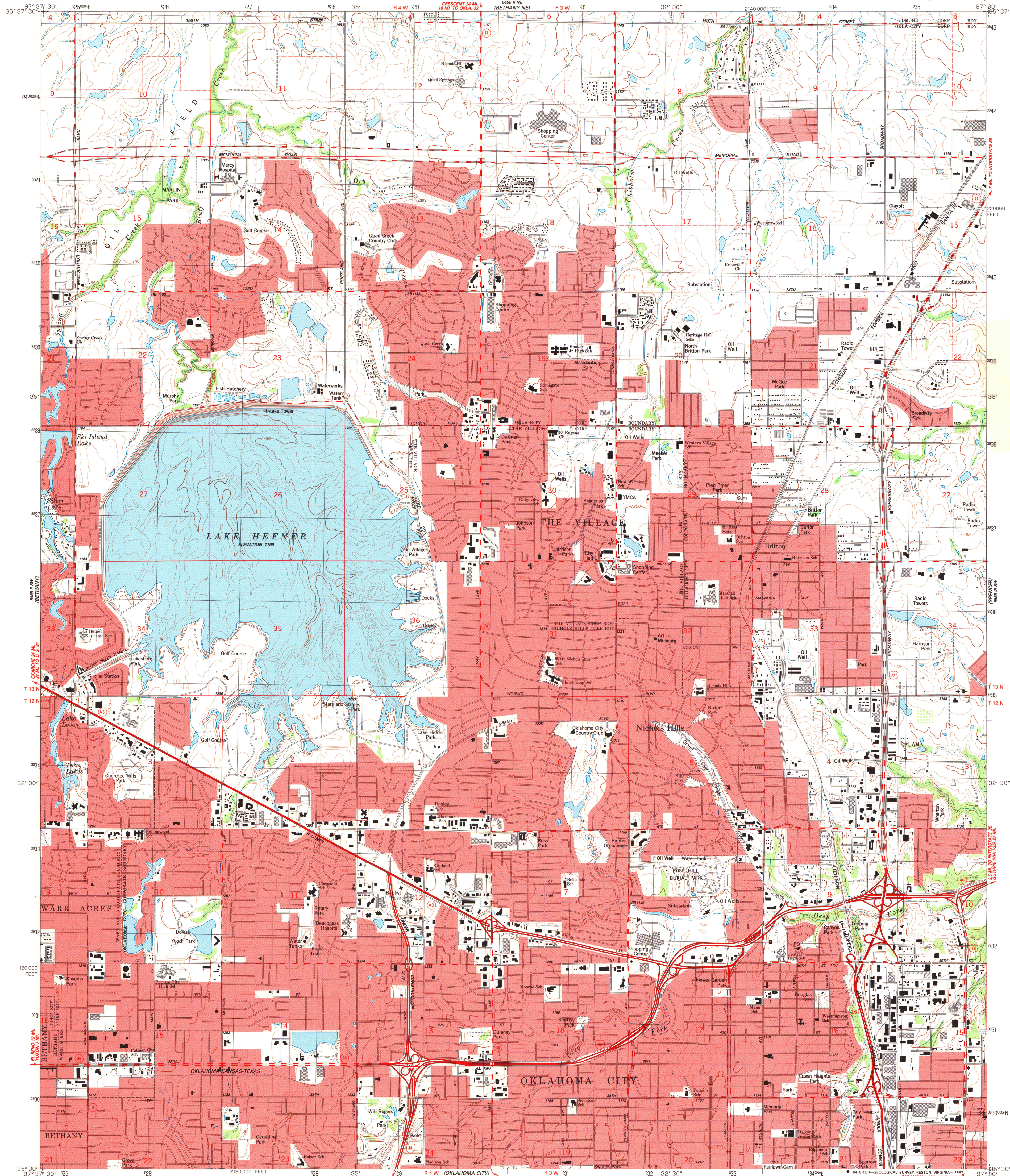


UNITED STATES
DEPARTMENT OF THE INTERIOR
GEOLOGICAL SURVEY

BRITTON QUADRANGLE
OKLAHOMA-OKLAHOMA CO.
7.5 MINUTE SERIES (TOPOGRAPHIC)



Maped, edited, and published by the Geological Survey

Control by USGS and NOS/NOAA

Planimetry by photogrammetric methods from aerial photographs

taken 1941, 1945, and 1950. Topography by planimetric surveys 1951

Revised from photographs taken 1984. Field checked 1985

Map edited 1986

Underwater contours in Lake Hefner by Water Resources Division

Projection and 10,000-foot grid ticks: Oklahoma coordinate

system, north zone (Lambert conformal conic)

1000-meter Universal Transverse Mercator grid, zone 14

1927 North American Datum

To place on the predicted North American Datum 1983,

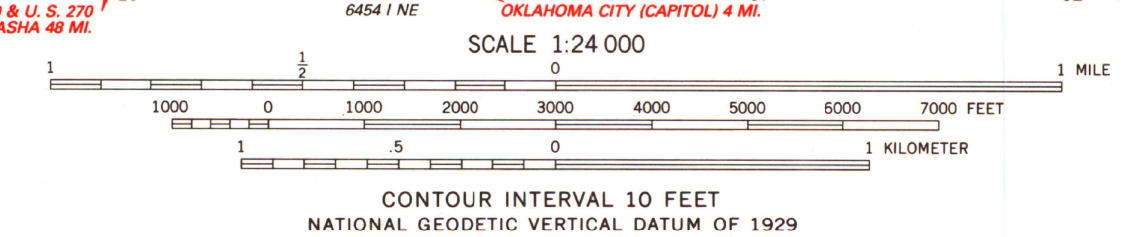
move the projection lines 3 meters south and

28 meters east as shown by dashed corner ticks

Red tint indicates areas in which only landmark buildings are shown

Fine red dashed lines indicate selected fence and field lines where

generally visible on aerial photographs. This information is unchecked



THIS MAP COMPLIES WITH NATIONAL MAP ACCURACY STANDARDS
FOR SALE BY U.S. GEOLOGICAL SURVEY, DENVER, COLORADO 80225, OR RESTON, VIRGINIA 22092
AND OKLAHOMA GEOLOGICAL SURVEY, NORMAN, OKLAHOMA 73069
A FOLDER DESCRIBING TOPOGRAPHIC MAPS AND SYMBOLS IS AVAILABLE ON REQUEST



ROAD CLASSIFICATION	
Primary highway, hard surface	Light-duty road, hard or improved surface
Secondary highway, hard surface	Unimproved road
Interstate Route	U.S. Route
	State Route

BRITTON, OKLA.
35097-E5-TF-024

1986

DMA 6455 II SE-SERIES V883

U.S. Regional
Depository Copy
DO NOT DISCARD

ARTHUR H. ROBINSON MAP LIBRARY
University of Wisconsin-Madison

MAY 11 1987