

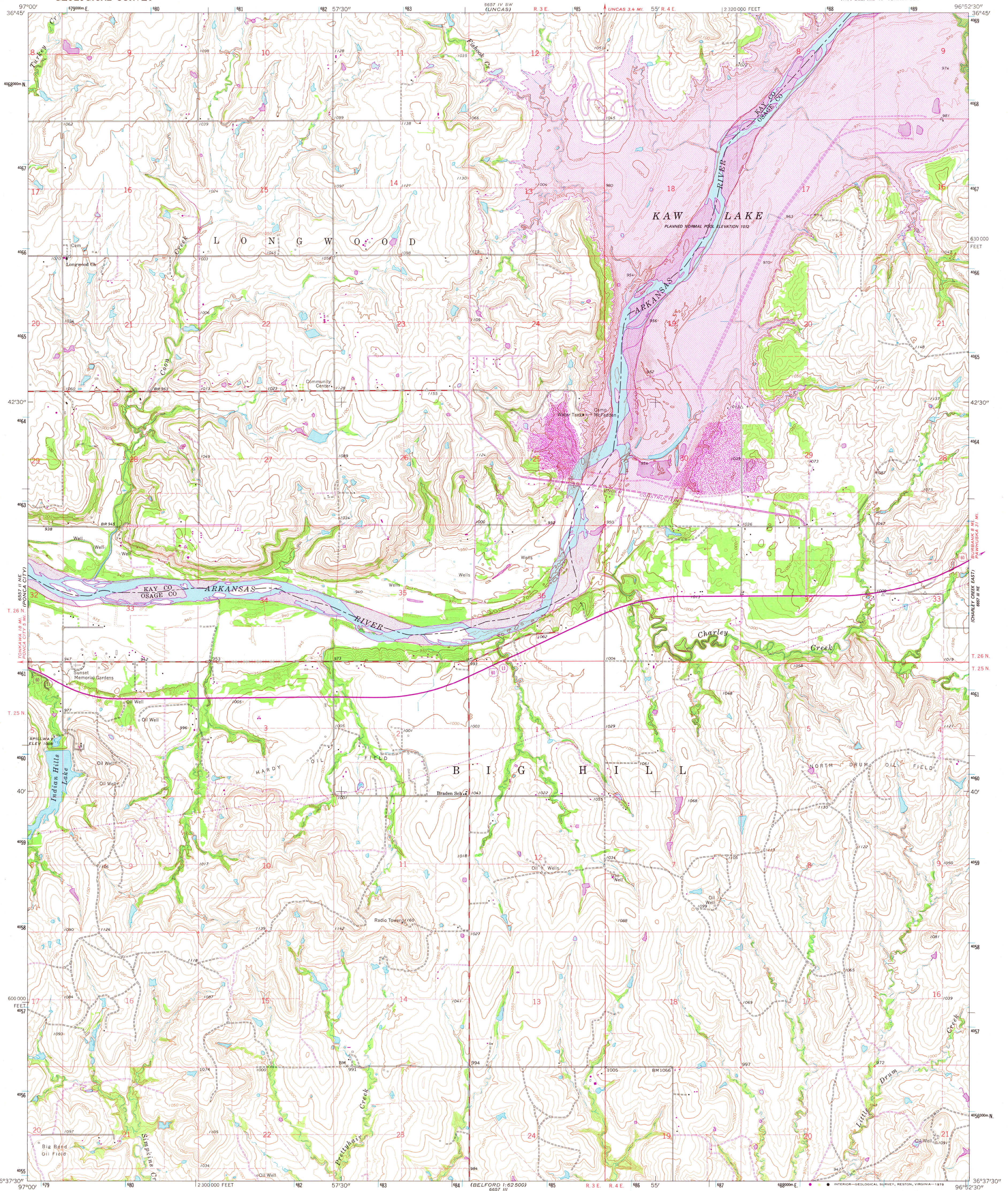
6557 145
WILDAES

UNITED STATES
DEPARTMENT OF THE INTERIOR
GEOLOGICAL SURVEY

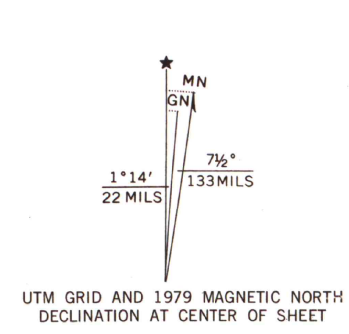


CHARLEY CREEK WEST QUADRANGLE
OKLAHOMA
7.5 MINUTE SERIES (TOPOGRAPHIC)

6557 145
WILDAES



Maped, edited, and published by the Geological Survey
Control by USGS, USC&GS and USCE
Topography by photogrammetric methods from aerial
photographs taken 1963. Field checked 1963
Polyconic projection. 1927 North American datum
10,000-foot grid based on Oklahoma coordinate system, north zone
1000-metre Universal Transverse Mercator grid ticks,
zone 14, shown in blue
Fine red dashed lines indicate selected fence and field lines where
generally visible on aerial photographs. This information is unchecked
Revisions shown in purple and woodland compiled from
aerial photographs taken 1976 and other source data
This information not field checked. Map edited 1979
Purple hatching indicates areas to be submerged



SCALE 1:24 000
1 000 2000 3000 4000 5000 6000 7000 FEET
1 KILOMETRE
CONTOUR INTERVAL 10 FEET
DOTTED LINES REPRESENT 5-FOOT CONTOURS
NATIONAL GEODETIC VERTICAL DATUM OF 1929
THIS MAP COMPLIES WITH NATIONAL MAP ACCURACY STANDARDS
FOR SALE BY U. S. GEOLOGICAL SURVEY, DENVER, COLORADO 80225, OR RESTON, VIRGINIA 22092
AND BY THE OKLAHOMA GEOLOGICAL SURVEY, NORMAN, OKLAHOMA 73069
A FOLDER DESCRIBING TOPOGRAPHIC MAPS AND SYMBOLS IS AVAILABLE ON REQUEST

ROAD CLASSIFICATION

Primary highway, all weather, hard surface	Light-duty road, all weather, improved surface
Secondary highway, all weather, hard surface	Unimproved road, fair or dry weather
Interstate Route	U. S. Route
	State Route



CHARLEY CREEK WEST, OKLA. MAP AND AIR PHOTO LIBRARY
(FORMERLY CHARLEY CREEK)
NW/4 BELFORD 15' QUADRANGLE
N3637.5-W9652.5/7.5
1963
PHOTOREVISED 1979
AMS 6557 III NW-SERIES V83
FEB 20 1980
University of Wisconsin
Madison