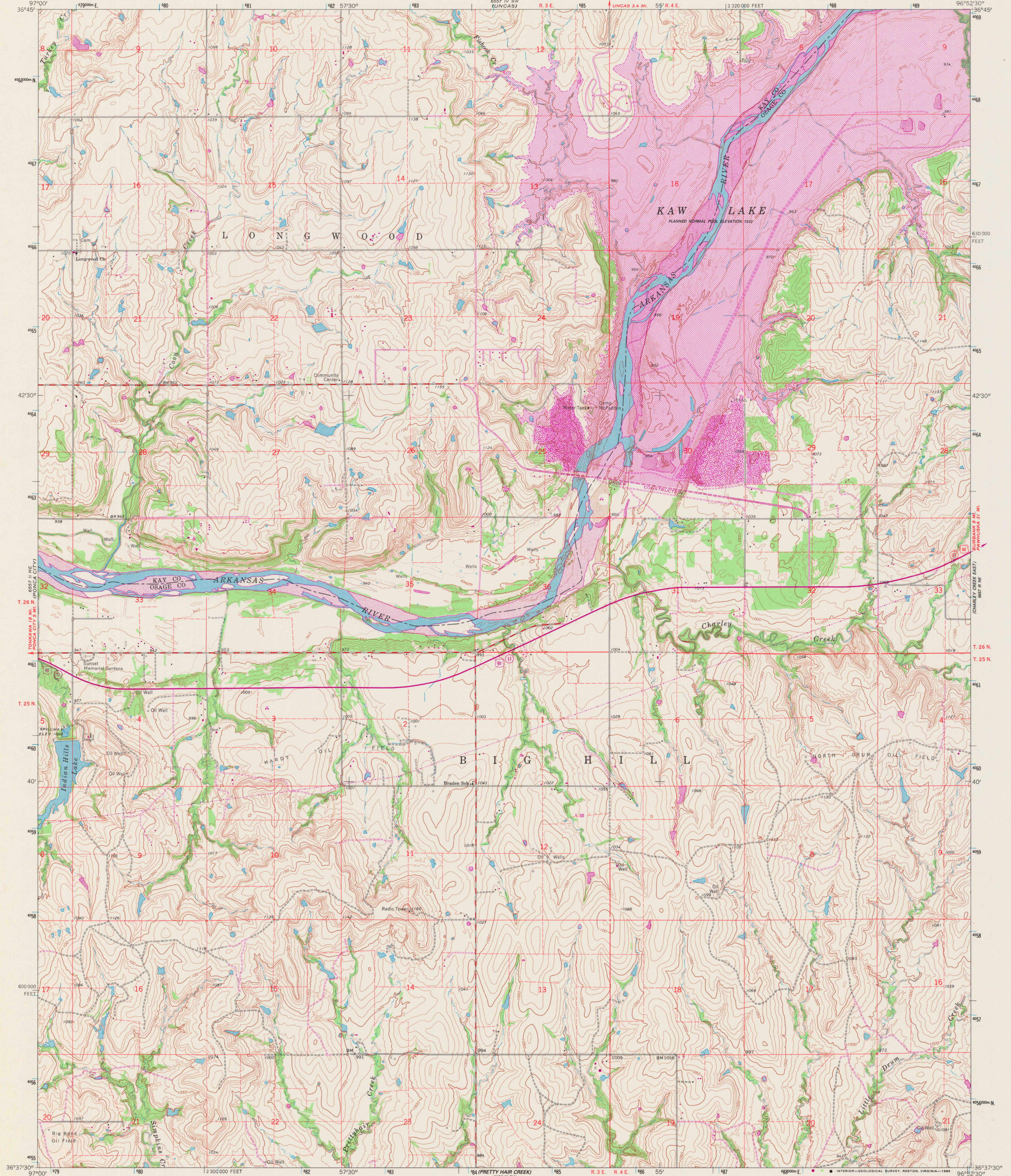
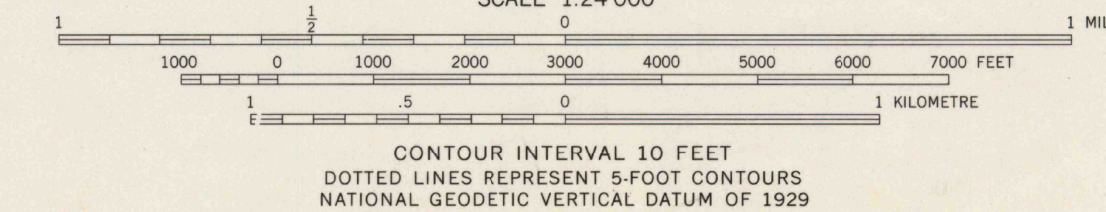
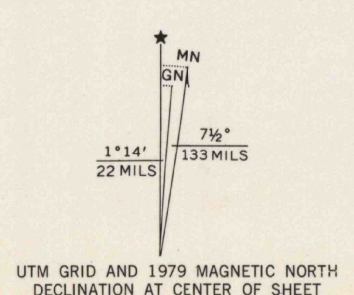


UNITED STATES
DEPARTMENT OF THE INTERIOR
GEOLOGICAL SURVEY

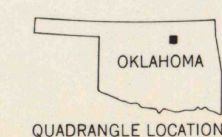
CHARLEY CREEK WEST QUADRANGLE
OKLAHOMA
7.5 MINUTE SERIES (TOPOGRAPHIC)
NW/4 BELFORD 15' QUADRANGLE



Mapped, edited, and published by the Geological Survey
Control by USGS, USC&GS and USCE
Topography by photogrammetric methods from aerial
photographs taken 1963. Field checked 1963
Polyconic projection. 1927 North American datum
10,000-foot grid based on Oklahoma coordinate system, north zone
1000-metre Universal Transverse Mercator grid ticks,
zone 14, shown in blue
Fine red dashed lines indicate selected fence and field lines where
generally visible on aerial photographs. This information is unchecked
Revisions shown in purple and woodland compiled from
aerial photographs taken 1976 and other source data
This information not field checked. Map edited 1979
Purple hatching indicates areas to be submerged



THIS MAP COMPLIES WITH NATIONAL MAP ACCURACY STANDARDS
FOR SALE BY U. S. GEOLOGICAL SURVEY, DENVER, COLORADO 80225, OR RESTON, VIRGINIA 22092
AND OKLAHOMA GEOLOGICAL SURVEY, NORMAN, OKLAHOMA 73069
A FOLDER DESCRIBING TOPOGRAPHIC MAPS AND SYMBOLS IS AVAILABLE ON REQUEST



ROAD CLASSIFICATION
Primary highway, all weather, hard surface
Secondary highway, all weather, hard surface
Light-duty road, all weather, improved surface
Unimproved road, fair or dry weather
Interstate Route
U. S. Route
State Route
CHARLEY CREEK WEST, OKLA.
(FORMERLY CHARLEY CREEK)
NW/4 BELFORD 15' QUADRANGLE
N3637.5-W9652.5/7.5
1963
PHOTOREVISED 1979
AMS 6657 III NW-SERIES V883

RETURN TO:
USGS AND HISTORICAL MAP ARCHIVES

AUG 24 1989