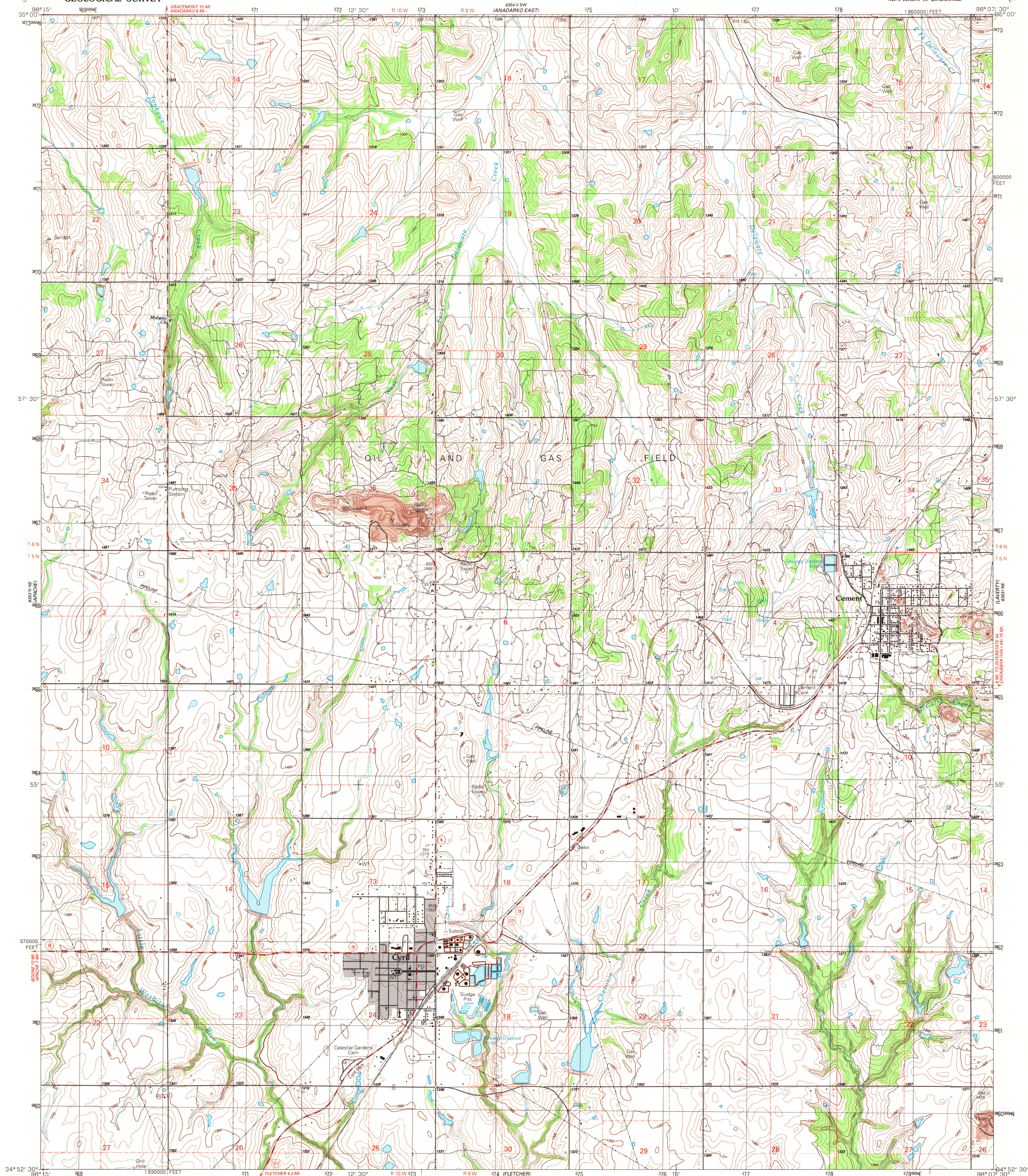


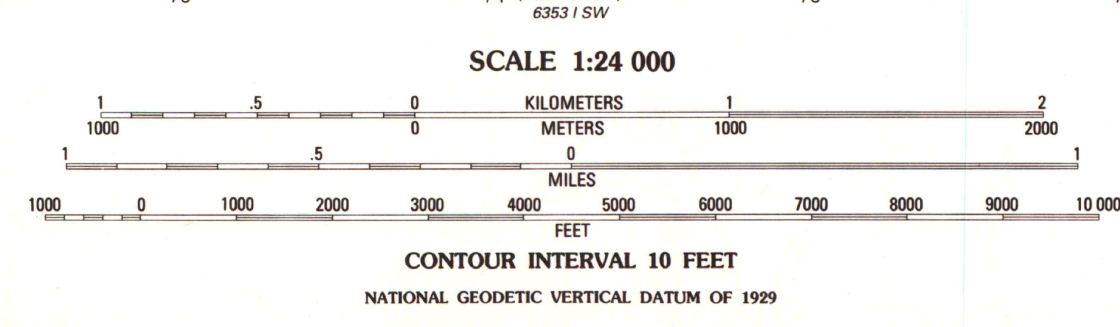
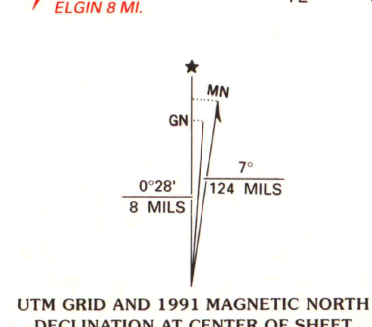
UNITED STATES
DEPARTMENT OF THE INTERIOR
GEOLOGICAL SURVEY

STATE OF OKLAHOMA

CYRIL QUADRANGLE
OKLAHOMA-CADDO CO.
7.5 MINUTE SERIES (TOPOGRAPHIC)
NW/4 CEMENT 15' QUADRANGLE



Produced by the United States Geological Survey
in cooperation with the Oklahoma Highway Department
Oklahoma Water Resources Board and Oklahoma State Soil
Conservation Board
Control by USGS, NOS/NOAA and Oklahoma Department of Transportation
Compiled from aerial photographs taken 1987
Field checked 1988. Map edited 1991
Projection and 10,000-foot grid ticks: Oklahoma coordinate
system, south zone (Lambert conformal conic)
1000-meter Universal Transverse Mercator grid, zone 14
1927 North American Datum
The difference between 1927 North American Datum and North
American Datum of 1983 (NAD 83) for 7.5-minute intersections
is given in USGS Bulletin 1875. The NAD 83 is shown by
dashed corner ticks
Gray tint indicates area in which only landmark buildings are shown
Contours in intricate surface areas are generalized
Fine red dashed lines indicate selected fence and field lines where
generally visible on aerial photographs. This information is unchecked



ROAD CLASSIFICATION

Primary highway, hard surface	Light-duty road, hard or improved surface
Secondary highway, hard surface	Unimproved road
Interstate Route	U. S. Route
	State Route

OKLAHOMA
QUADRANGLE LOCATION

A.H. ROBINSON
MAP LIBRARY
JUN 21 1992

CYRIL, OKLA.
NW/4 CEMENT 15' QUADRANGLE
34098-H2-TF-024
1991
DMA 6353 1 NW-SERIES V883

U.S. Regional
Depository Copy
DO NOT DISCARD

University of Wisconsin
Madison