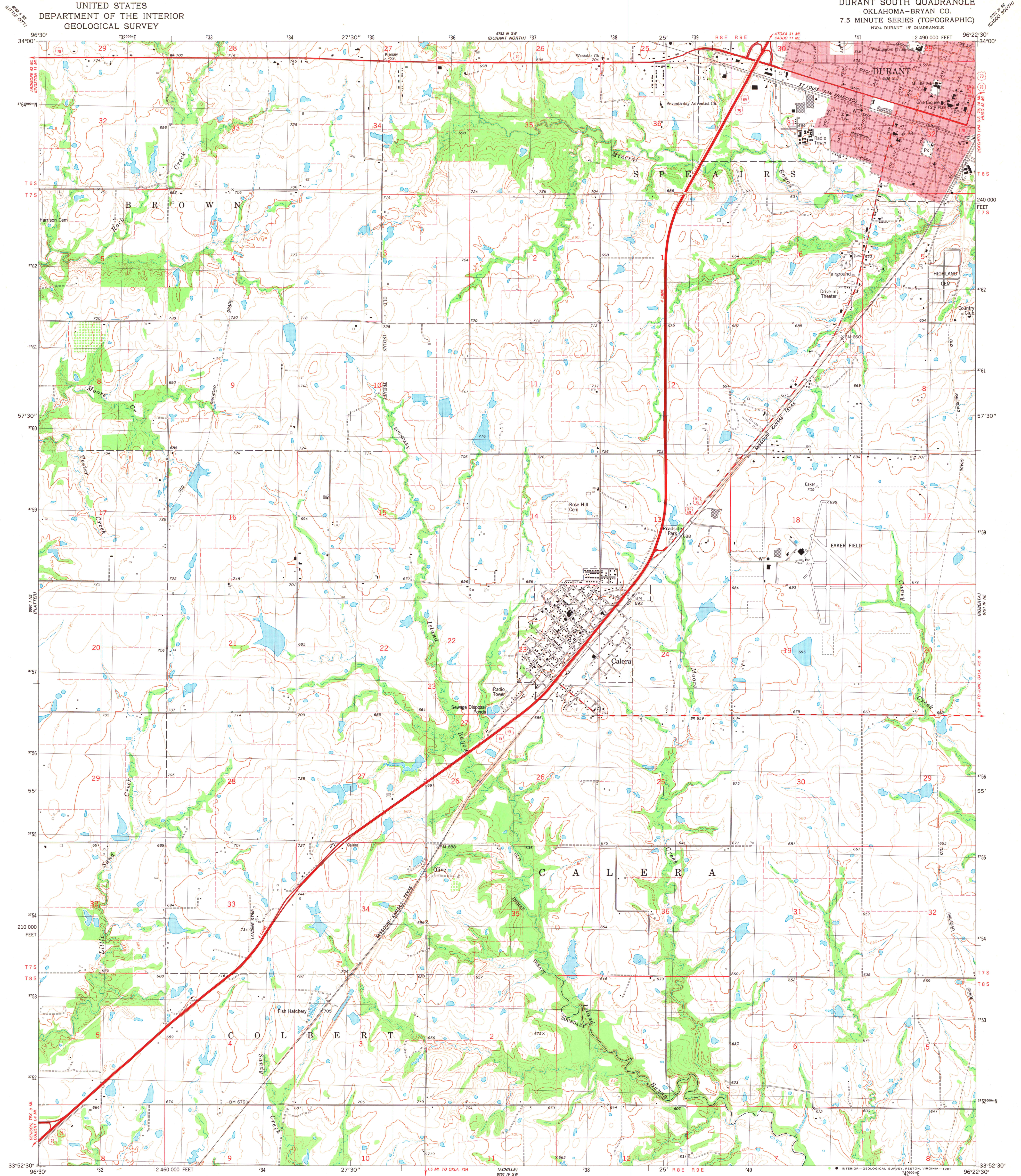


UNITED STATES
DEPARTMENT OF THE INTERIOR
GEOLOGICAL SURVEY

DURANT SOUTH QUADRANGLE
OKLAHOMA-BRYAN CO.
7.5 MINUTE SERIES (TOPOGRAPHIC)
NW/4 DURANT 15' QUADRANGLE



Mapped, edited, and published by the Geological Survey

Control by USGS and NOS/NOAA

Topography by photogrammetric methods from aerial photographs taken 1974. Field checked 1975. Map edited 1980

Projection and 10,000-foot grid ticks: Oklahoma coordinate system, south zone (Lambert conformal conic)

1000-meter Universal Transverse Mercator grid, zone 14

1927 North American Datum

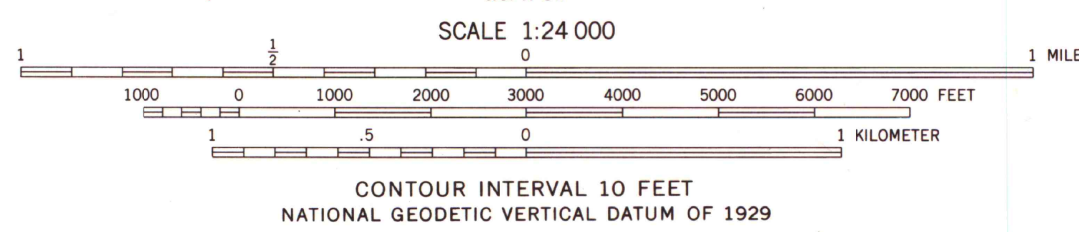
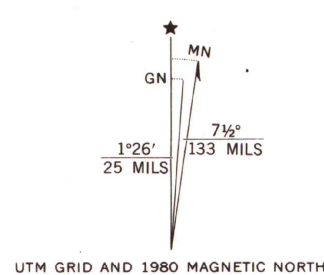
To place on the predicted North American Datum 1983

move the projection lines 7 meters south and

25 meters east as shown by dashed corner ticks

Red tint indicates areas in which only landmark buildings are shown

Fine red dashed lines indicate selected fence and field lines where generally visible on aerial photographs. This information is unchecked



THIS MAP COMPLIES WITH NATIONAL MAP ACCURACY STANDARDS
FOR SALE BY U.S. GEOLOGICAL SURVEY, DENVER, COLORADO 80225, OR RESTON, VIRGINIA 22092
AND BY THE OKLAHOMA GEOLOGICAL SURVEY, NORMAN, OKLAHOMA 73069
A FOLDER DESCRIBING TOPOGRAPHIC MAPS AND SYMBOLS IS AVAILABLE ON REQUEST

| ROAD CLASSIFICATION | |
|---------------------------------|---|
| Primary highway, hard surface | Light-duty road, hard or improved surface |
| Secondary highway, hard surface | Unimproved road |
| Interstate Route | U.S. Route |
| | State Route |



MAP AND AIR PHOTO
LIBRARY

JUN 15 1981

University of Wisconsin
Madison

DURANT SOUTH, OKLA.
NW/4 DURANT 15' QUADRANGLE
N3352.5-W9622.5/7.5

1980

DMA 6751 IV NW-SERIES 1983