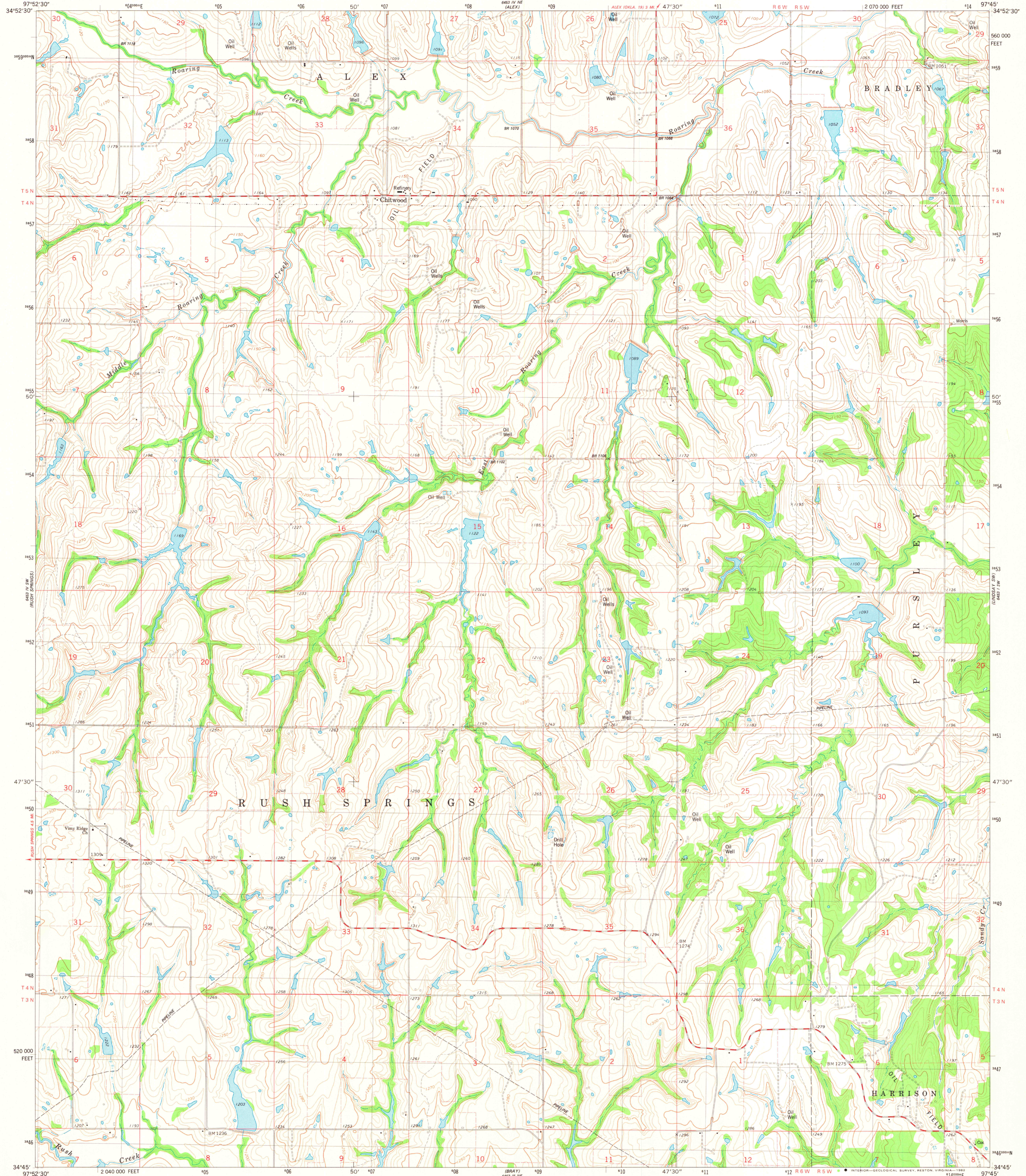
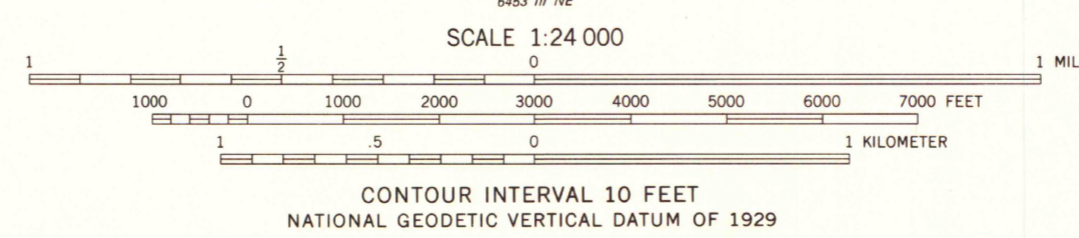
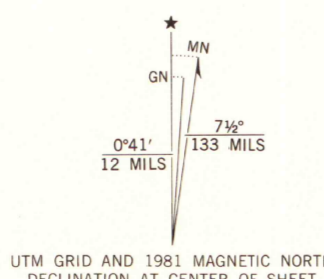


UNITED STATES
DEPARTMENT OF THE INTERIOR
GEOLOGICAL SURVEY

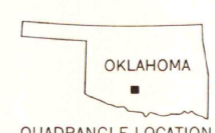
EAST ROARING CREEK QUADRANGLE
OKLAHOMA-GRADY CO.
7.5 MINUTE SERIES (TOPOGRAPHIC)
SE/4 RUSH SPRINGS 15' QUADRANGLE



Mapped, edited, and published by the Geological Survey
Control by USGS, NOS/NOAA
Topography by photogrammetric methods from aerial photographs
taken 1974. Field checked 1977. Map edited 1981
Projection and 10,000-foot grid ticks: Oklahoma coordinate
system, south zone (Lambert conformal conic)
1000-meter Universal Transverse Mercator grid, zone 14
1927 North American Datum
To place on the predicted North American Datum 1983
move the projection lines 5 meters south and
29 meters east as shown by dashed corner ticks
Fine red dashed lines indicate selected fence and field lines where
generally visible on aerial photographs. This information is unchecked



THIS MAP COMPLIES WITH NATIONAL MAP ACCURACY STANDARDS
FOR SALE BY U.S. GEOLOGICAL SURVEY, DENVER, COLORADO 80225, OR RESTON, VIRGINIA 22092
AND BY THE OKLAHOMA GEOLOGICAL SURVEY, NORMAN, OKLAHOMA 73069
A FOLDER DESCRIBING TOPOGRAPHIC MAPS AND SYMBOLS IS AVAILABLE ON REQUEST



EAST ROARING CREEK, OKLA.
SE/4 RUSH SPRINGS 15' QUADRANGLE
N3445-N9745/7.5

1981
DMA 6453 IV SE-SERIES Y883