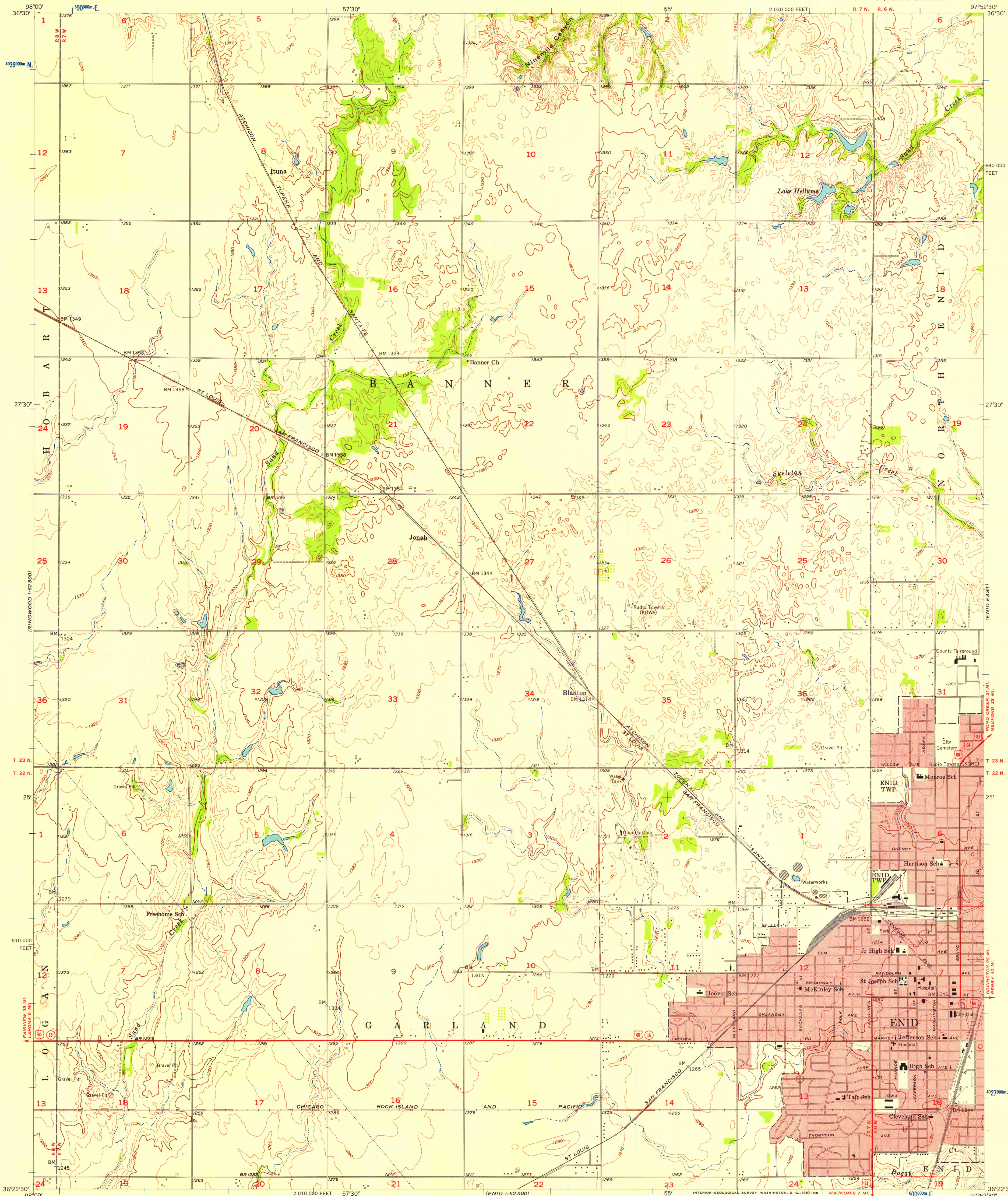


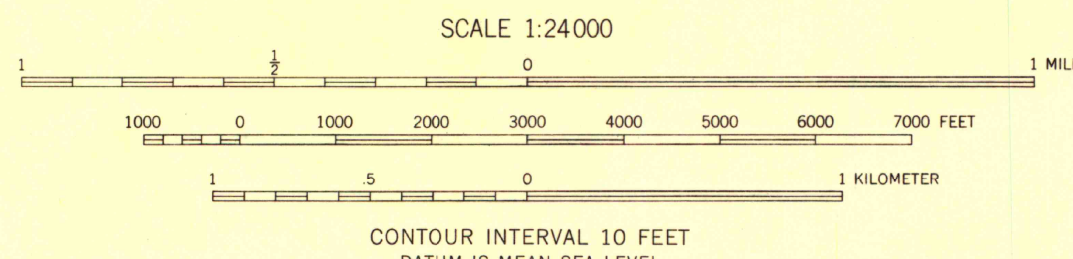
UNITED STATES
DEPARTMENT OF THE INTERIOR
GEOLOGICAL SURVEY

ENID WEST QUADRANGLE
OKLAHOMA-GARFIELD CO.
7.5 MINUTE SERIES (TOPOGRAPHIC)
NW/4 ENID 15' QUADRANGLE

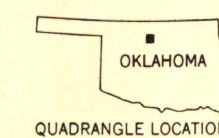


Mapped, edited, and published by the Geological Survey
Control by USGS, USC&GS, and Oklahoma Geodetic Survey
Topography from aerial photographs by Kelsh plotter
Aerial photographs taken 1954. Field check 1955
Polyconic projection. 1927 North American datum
10,000-foot grid based on Oklahoma coordinate system, north zone
1000 meter Universal Transverse Mercator Grid ticks,
Zone 14, shown in blue
Red tint indicates area in which only
landmark buildings are shown

TRUE NORTH
MAGNETIC NORTH
APPROXIMATE MEAN
DECLINATION, 1955



ROAD CLASSIFICATION
Heavy-duty ——— Light-duty ———
Medium-duty ——— Unimproved dirt ———
U.S. Route ——— State Route ———



UNIVERSITY OF WISCONSIN
Department of Geography

ENID WEST, OKLA.
NW/4 ENID 15' QUADRANGLE
N3622.5-W9752.5/7.5

1955

THIS MAP COMPLIES WITH NATIONAL MAP ACCURACY STANDARDS
FOR SALE BY U.S. GEOLOGICAL SURVEY, DENVER 2, COLORADO OR WASHINGTON 25, D. C.
A FOLDER DESCRIBING TOPOGRAPHIC MAPS AND SYMBOLS IS AVAILABLE ON REQUEST