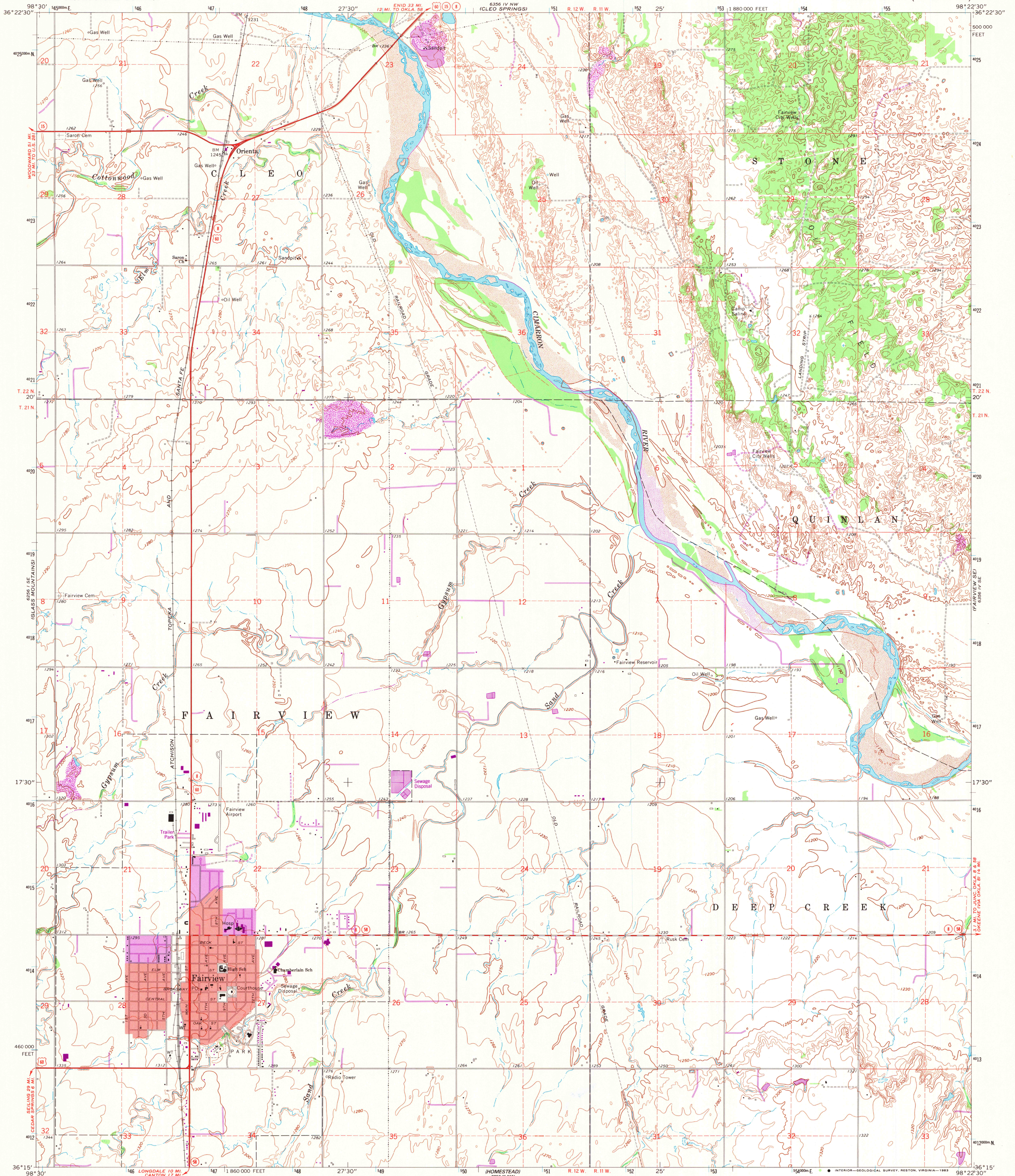


UNITED STATES
DEPARTMENT OF THE INTERIOR
GEOLOGICAL SURVEY

FAIRVIEW QUADRANGLE
OKLAHOMA—MAJOR CO.
7.5 MINUTE SERIES (TOPOGRAPHIC)



Mapped, edited, and published by the Geological Survey

Control by USGS and USC&GS

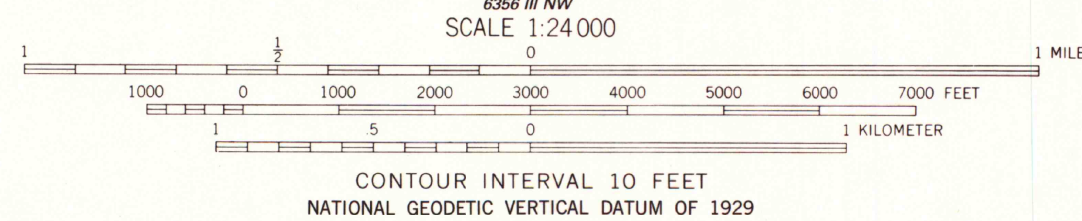
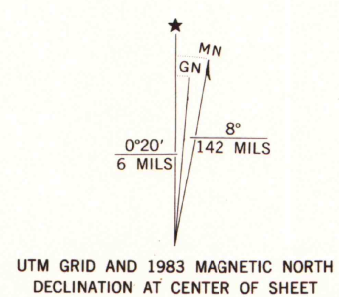
Topography by photogrammetric methods from aerial photographs taken 1968. Field checked 1969

Polyconic projection. 1927 North American datum 10,000-foot grid based on Oklahoma coordinate system, north zone 1000-meter Universal Transverse Mercator grid ticks, zone 14, shown in blue

Red tint indicates areas in which only landmark buildings are shown

To place on the predicted North American Datum 1983, move the projection lines 1 meter south and 31 meters east as shown by dashed corner ticks

Revisions shown in purple compiled from aerial photographs taken 1981 and other sources. This information is not field checked. Map edited 1983
Purple tint indicates extension of urban areas



THIS MAP COMPLIES WITH NATIONAL MAP ACCURACY STANDARDS
FOR SALE BY U.S. GEOLOGICAL SURVEY, DENVER, COLORADO 80225, OR RESTON, VIRGINIA 22092
AND OKLAHOMA GEOLOGICAL SURVEY, NORMAN, OKLAHOMA 73069
A FOLDER DESCRIBING TOPOGRAPHIC MAPS AND SYMBOLS IS AVAILABLE ON REQUEST

ROAD CLASSIFICATION	
Primary highway, all weather, hard surface	Light-duty road, all weather, improved surface
Secondary highway, all weather, hard surface	Unimproved road, fair or dry weather
U. S. Route	State Route



A.H. ROBINSON
MAP LIBRARY

DEC 5 1984

University of Wisconsin
Madison

FAIRVIEW, OKLA.
N3615—W9822.5/7.5

1969
PHOTOREVISED 1983
DMA 6356 IV SW—SERIES V883

U.S. Regional
Repository Copy
DO NOT DISCARD