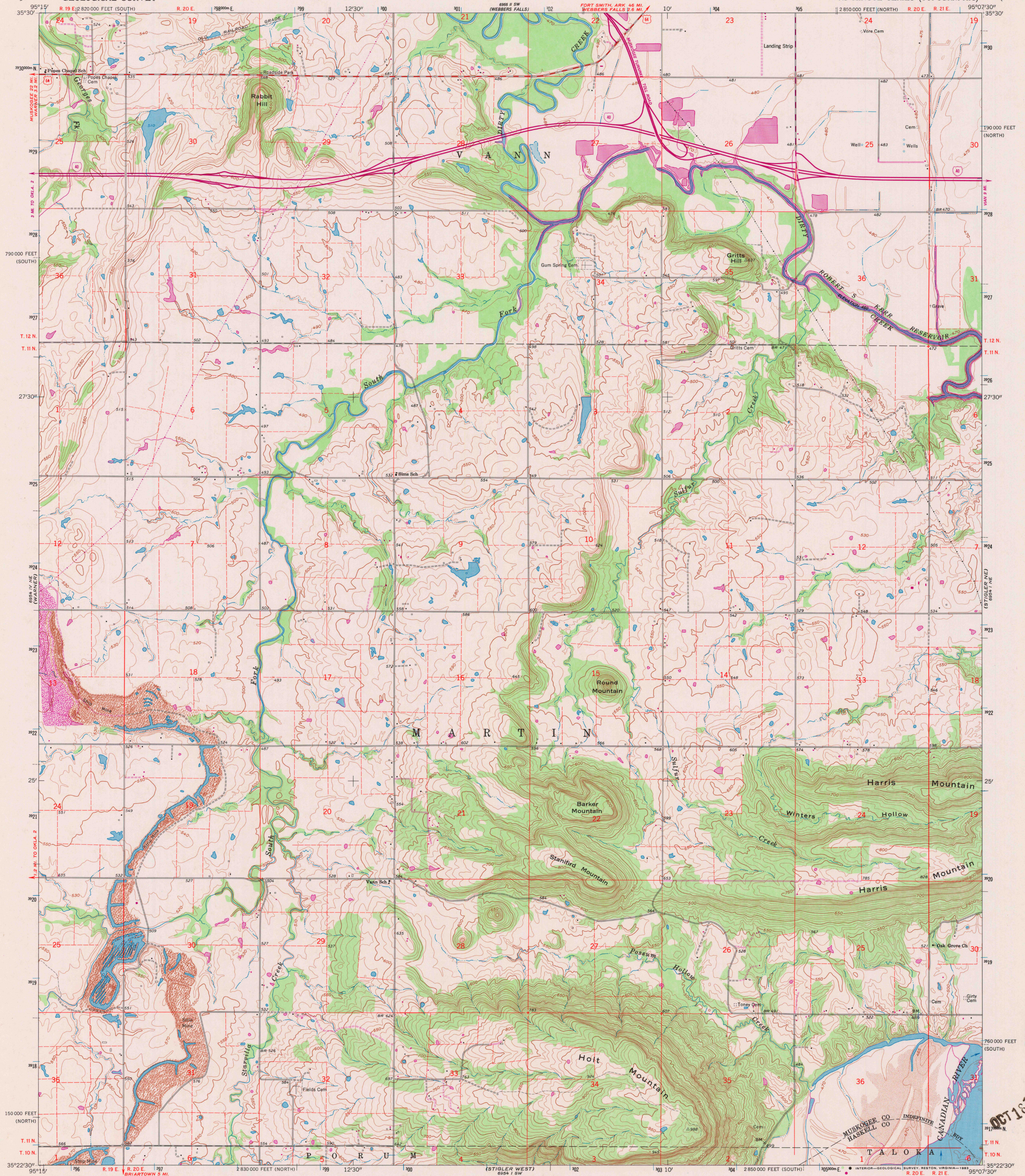


UNITED STATES
DEPARTMENT OF THE INTERIOR
GEOLOGICAL SURVEY

HOLT MOUNTAIN QUADRANGLE
OKLAHOMA
7.5 MINUTE SERIES (TOPOGRAPHIC)



Mapped, edited, and published by the Geological Survey

Control by USGS and USCGS

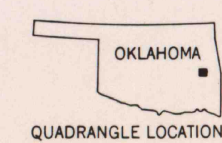
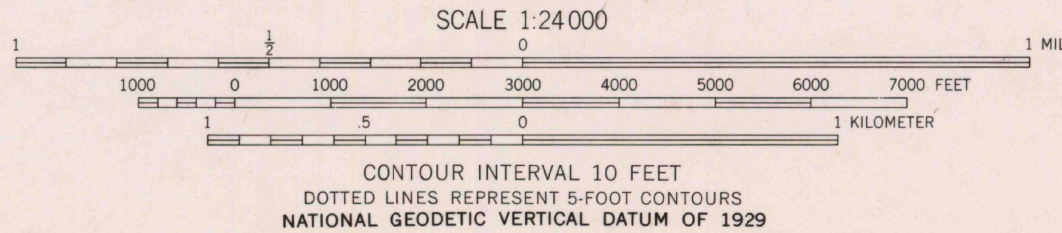
Topography by photogrammetric methods from aerial photographs taken 1958. Field checked 1963

Polyconic projection. 1927 North American datum
10,000-foot grids based on Oklahoma coordinate system,
north and south zones
1000-meter Universal Transverse Mercator grid ticks,
zone 15, shown in blue

Fine red dashed lines indicate selected fence and field lines where
generally visible on aerial photographs. This information is unchecked

Revisions shown in purple and woodland compiled from
aerial photographs taken 1973 and other source data
This information not field checked. Map edited 1979

To place on the predicted North American Datum 1983
move the projection lines 5 meters south and
21 meters east as shown by dashed corner ticks



ROAD CLASSIFICATION
Primary highway, all weather, hard surface
Secondary highway, all weather, hard surface
Light-duty road, all weather, improved surface
Unimproved road, fair or dry weather
Interstate Route
U. S. Route
State Route

HOLT MOUNTAIN, OKLA.
N3522.5—W9507.5/7.5

1963
PHOTOREVISED 1979
AMS 6954 I NW—SERIES V885

THIS MAP COMPLIES WITH NATIONAL MAP ACCURACY STANDARDS
FOR SALE BY U. S. GEOLOGICAL SURVEY, DENVER, COLORADO 80225 OR RESTON, VIRGINIA 22092
AND BY OKLAHOMA GEOLOGICAL SURVEY, NORMAN, OKLAHOMA 73069
A FOLDER DESCRIBING TOPOGRAPHIC MAPS IS AVAILABLE ON REQUEST

RETURN TO:
USGS AND HISTORICAL MAP ARCHIVES

OCT 16 1983
(STIGLER EAST)