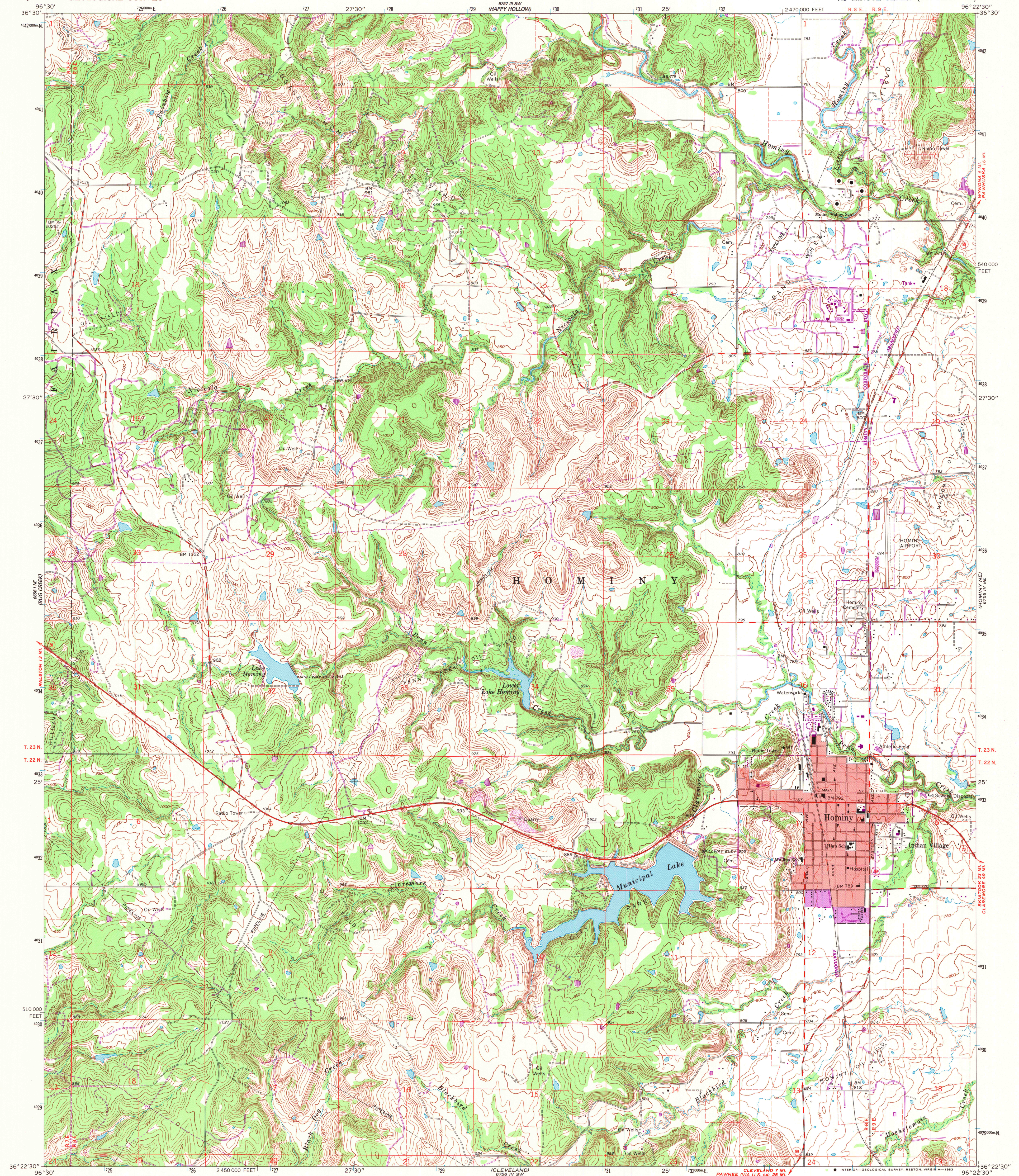


6857 35
(LUCY CREEK)

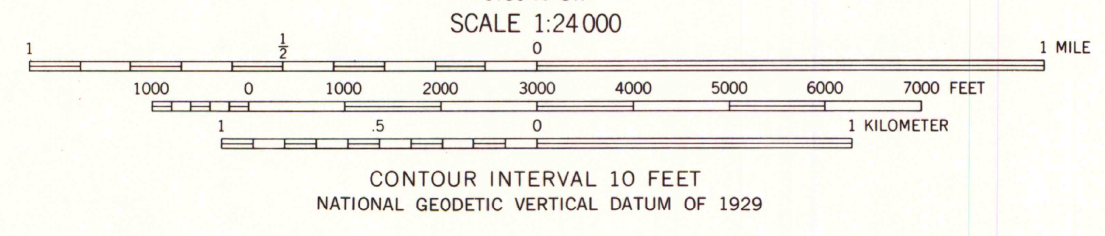
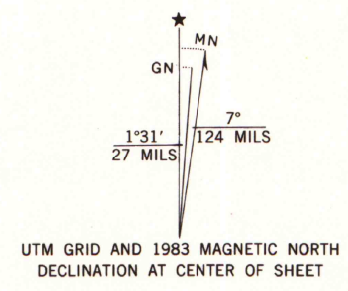
UNITED STATES
DEPARTMENT OF THE INTERIOR
GEOLOGICAL SURVEY

HOMINY QUADRANGLE
OKLAHOMA—OSAGE CO.
7.5 MINUTE SERIES (TOPOGRAPHIC)

6757 11 SE
(WYOMING)



Mapped, edited, and published by the Geological Survey
Control by USGS and USC&GS
Topography by photogrammetric methods from aerial
photographs taken 1965. Field checked 1966
Polyconic projection. 1927 North American datum
10,000-foot grid based on Oklahoma coordinate system, north zone
1000-meter Universal Transverse Mercator grid ticks,
zone 14, shown in blue
Red tint indicates area in which only landmark buildings are shown
To place on the predicted North American Datum 1983
move the projection lines 2 meters south and
25 meters east as shown by dashed corner ticks
Revisions shown in purple compiled from aerial photographs taken 1981 and
other sources. This information not field checked. Map edited 1983
Purple tint indicates extension of urban area



THIS MAP COMPLIES WITH NATIONAL MAP ACCURACY STANDARDS
FOR SALE BY U.S. GEOLOGICAL SURVEY, DENVER, COLORADO 80225, OR RESTON, VIRGINIA 22092
AND OKLAHOMA GEOLOGICAL SURVEY, NORMAN, OKLAHOMA 73069
A FOLDER DESCRIBING TOPOGRAPHIC MAPS AND SYMBOLS IS AVAILABLE ON REQUEST



ROAD CLASSIFICATION
Heavy-duty ——— Light-duty ———
Medium-duty ——— Unimproved dirt ———
State Route —○—

HOMINY, OKLA.
N3622.5—W9622.5/7.5

1966
PHOTOREVISED 1983
DMA 6756 IV NW—SERIES V883

A.H. ROBINSON
MAP LIBRARY
DEC 5 1984

University of Wisconsin
Madison