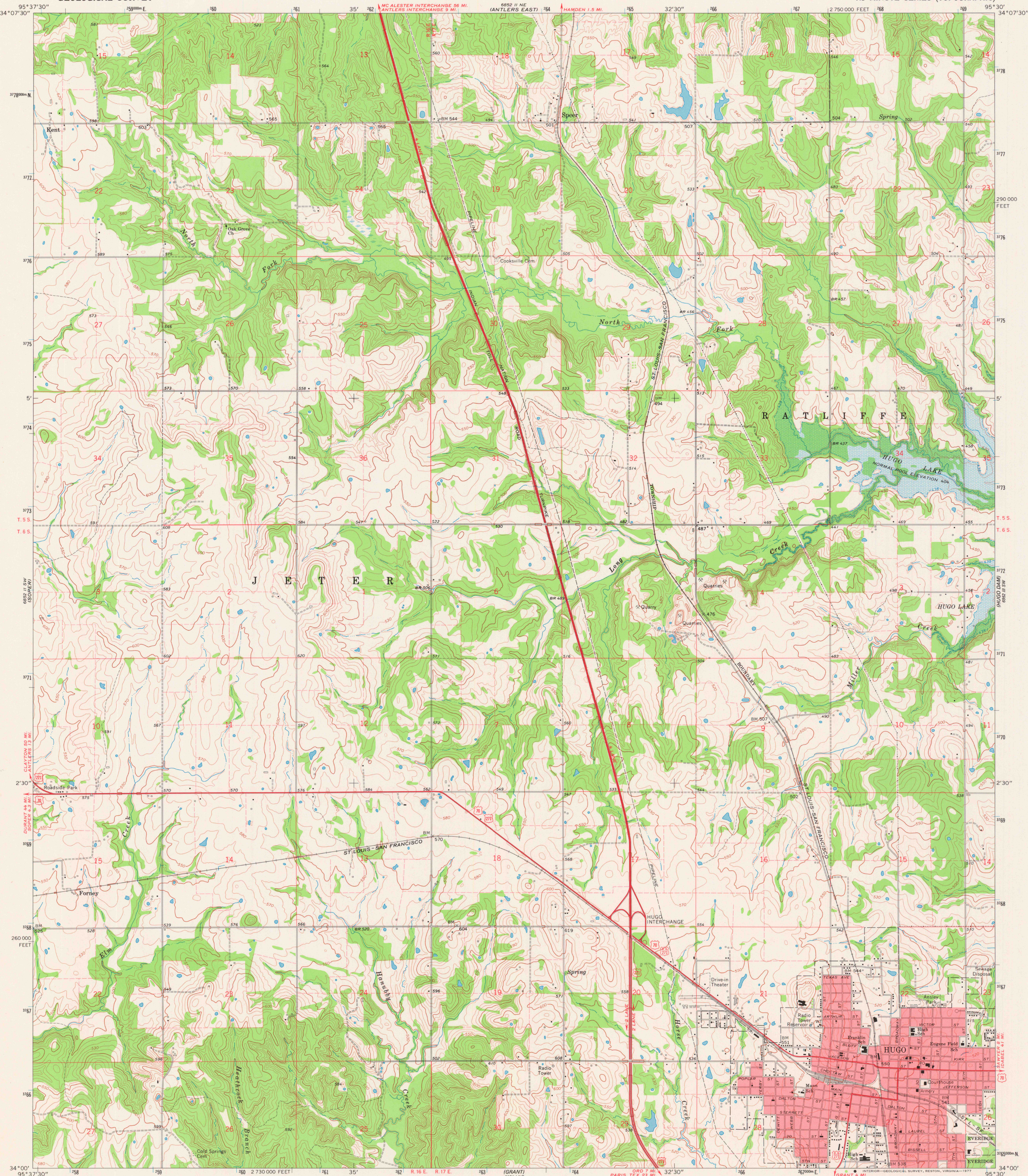
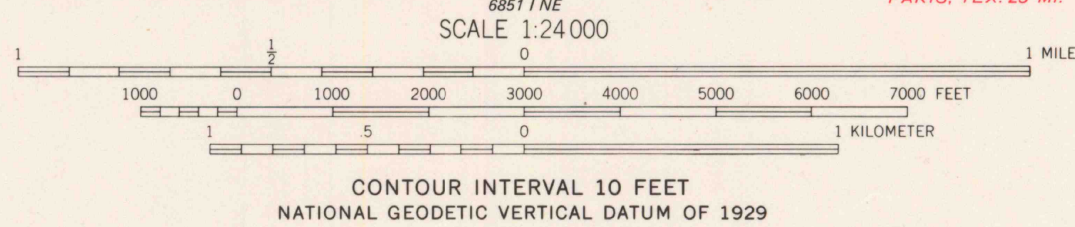
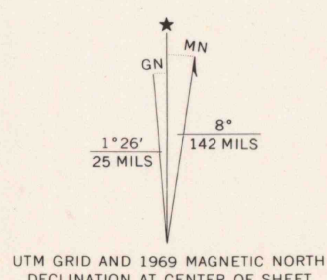


UNITED STATES  
DEPARTMENT OF THE INTERIOR  
GEOLOGICAL SURVEY

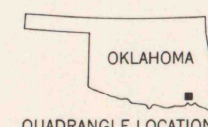
HUGO QUADRANGLE  
OKLAHOMA-CHOCTAW CO.  
7.5 MINUTE SERIES (TOPOGRAPHIC)



Mapped, edited, and published by the Geological Survey  
Control by USGS, USC&GS, and Oklahoma Geological Survey  
Topography by photogrammetric methods from aerial  
photographs taken 1966. Field checked 1969  
Polyconic projection. 1927 North American datum  
10,000-foot grid based on Oklahoma coordinate system, south zone  
1000-meter Universal Transverse Mercator grid ticks,  
zone 15, shown in blue  
Red tint indicates area in which only landmark buildings are shown  
Areas covered by dashed light-blue pattern  
are subject to controlled inundation  
Fine red dashed lines indicate selected fence and field lines where  
generally visible on aerial photographs. This information is unchecked



THIS MAP COMPLIES WITH NATIONAL MAP ACCURACY STANDARDS  
FOR SALE BY U. S. GEOLOGICAL SURVEY, DENVER, COLORADO 80225, OR RESTON, VIRGINIA 22092  
AND BY THE OKLAHOMA GEOLOGICAL SURVEY, NORMAN, OKLAHOMA 73069  
A FOLDER DESCRIBING TOPOGRAPHIC MAPS AND SYMBOLS IS AVAILABLE ON REQUEST



ROAD CLASSIFICATION  
Primary highway, all weather, Light-duty road, all weather,  
hard surface improved surface  
Unimproved road, fair or dry  
weather  
U. S. Route

USGS  
Historical File  
Topographic Division

HUGO, OKLA.  
N3400-W9530/7.5  
1969

AMS 6852 II SE-SERIES V883

3800  
FEB 08 1978