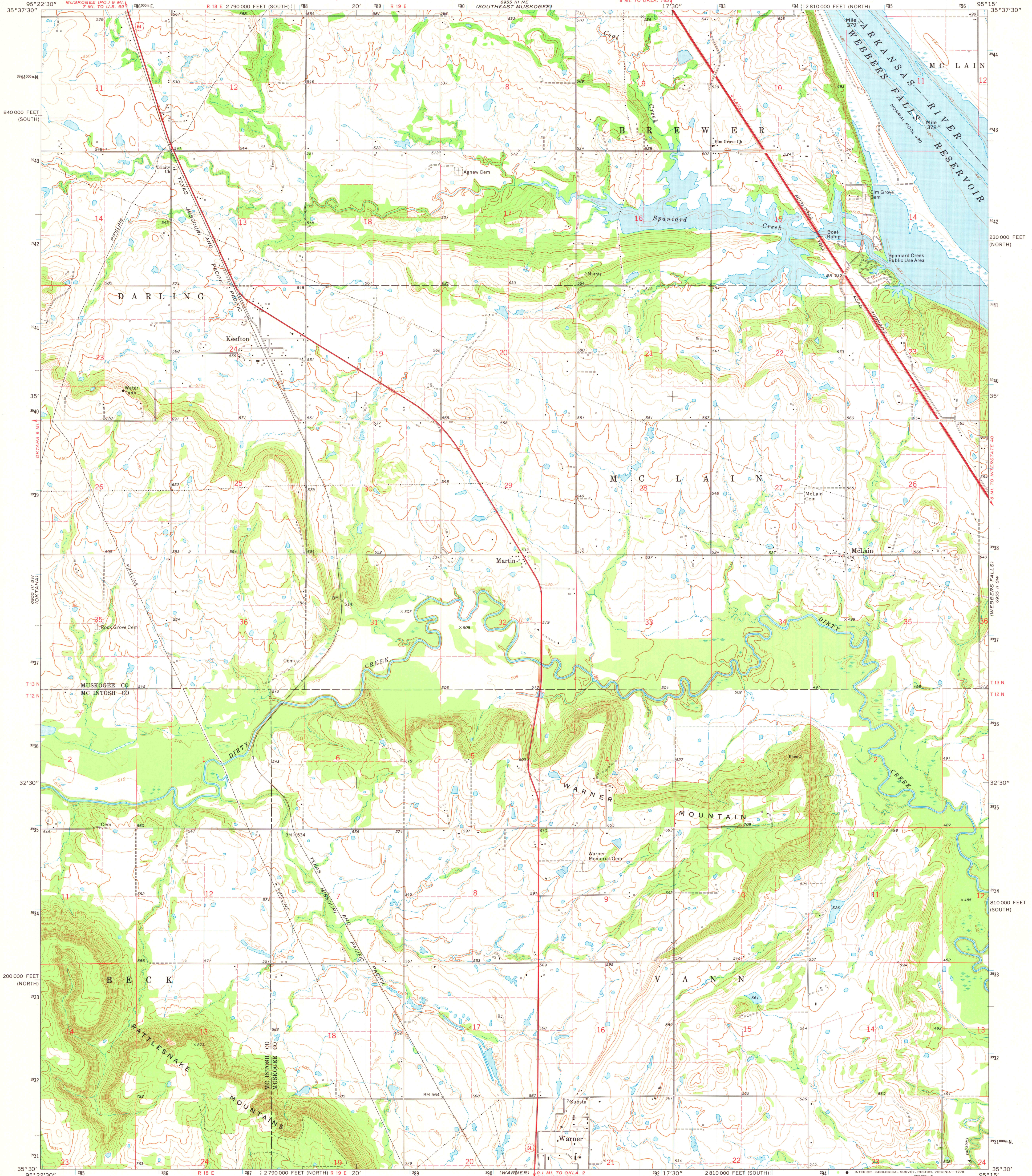
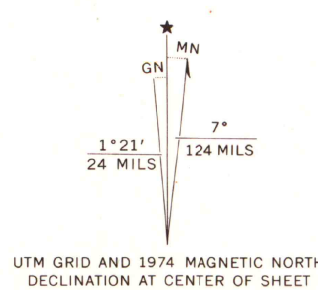


UNITED STATES
DEPARTMENT OF THE INTERIOR
GEOLOGICAL SURVEY

KEEFTON QUADRANGLE
OKLAHOMA
7.5 MINUTE SERIES (TOPOGRAPHIC)
SE/4 KEEFTON 15' QUADRANGLE

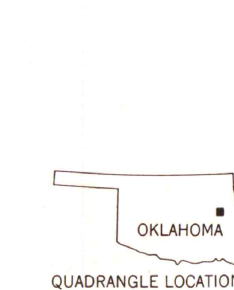


Mapped, edited, and published by the Geological Survey
Control by USGS and NOS/NOAA
Topography by photogrammetric methods from aerial
photographs taken 1973. Field checked 1974
Projection: Oklahoma coordinate system, north zone
(Lambert conformal conic)
10,000-foot grid ticks based on Oklahoma coordinate
system, north and south zones
1000-metre Universal Transverse Mercator grid ticks,
zone 15, shown in blue. 1927 North American datum
Fine red dashed lines indicate selected fence and field lines where
generally visible on aerial photographs. This information is unchecked



CONTOUR INTERVAL 10 FEET
DOTTED LINES REPRESENT 5-FOOT CONTOURS
CONTOUR INTERVAL 20 FEET IN WEBB'S FALLS RESERVOIR
NATIONAL GEODETIC VERTICAL DATUM OF 1929

THIS MAP COMPLIES WITH NATIONAL MAP ACCURACY STANDARDS
FOR SALE BY U. S. GEOLOGICAL SURVEY, DENVER, COLORADO 80225, OR RESTON, VIRGINIA 22092
AND BY THE OKLAHOMA GEOLOGICAL SURVEY, NORMAN, OKLAHOMA 73069
A FOLDER DESCRIBING TOPOGRAPHIC MAPS AND SYMBOLS IS AVAILABLE ON REQUEST



ROAD CLASSIFICATION
Primary highway, hard surface
Secondary highway, hard surface
Light-duty road, hard or improved surface
Unimproved road
Interstate Route
U. S. Route
State Route

MAP AND AIR PHOTO
LIBRARY
AUG 29 1978
University of Wisconsin

KEEFTON, OKLA.
SE/4 KEEFTON 15' QUADRANGLE
N3530-W9515/7.5
1974
AMS 6955 III SE-SERIES V883