

6854 III SE
(TANAWA)

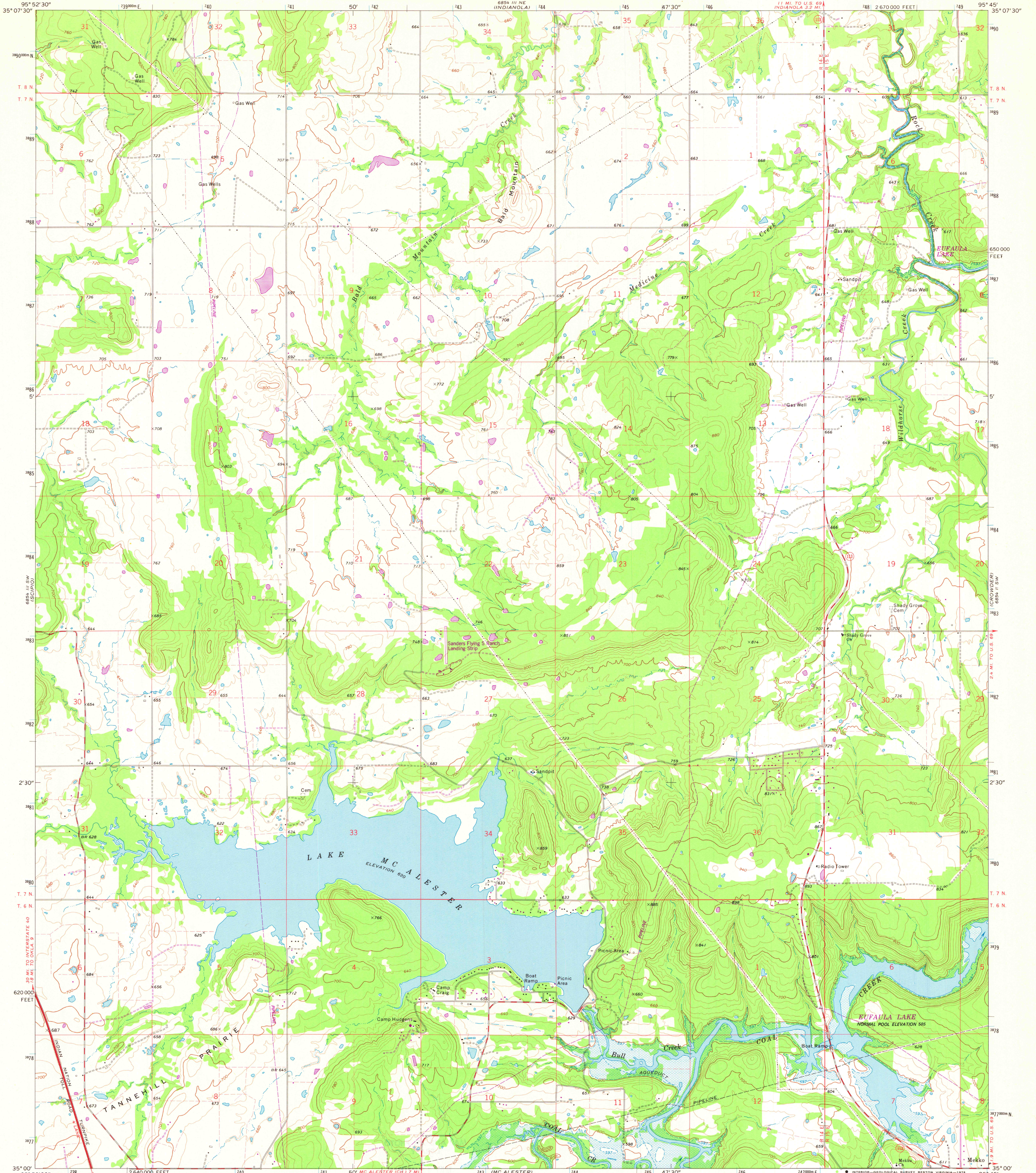
UNITED STATES
DEPARTMENT OF THE INTERIOR
GEOLOGICAL SURVEY



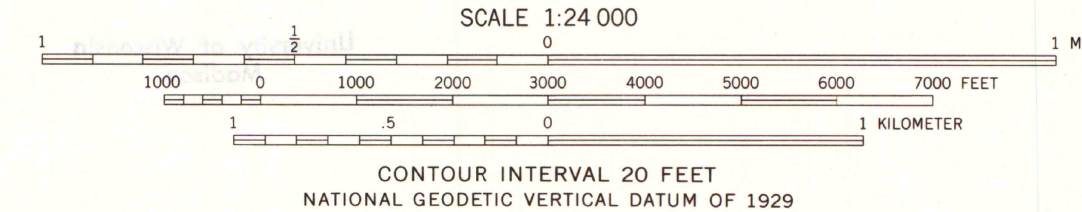
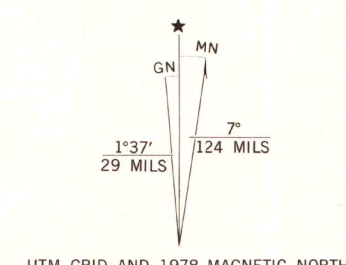
STATE OF OKLAHOMA

LAKE MC ALESTER QUADRANGLE
OKLAHOMA—PITTSBURG CO.
7.5 MINUTE SERIES (TOPOGRAPHIC)

6854 III NW
(CANDIAN)



Maped, edited, and published by the Geological Survey in cooperation with the Oklahoma Highway Department, Oklahoma Water Resources Board, and Oklahoma State Soil Conservation Board
Control by USGS and US&GS
Topography by photogrammetric methods from aerial photographs taken 1966. Field checked 1971
Polyconic projection. 1927 North American datum 10,000-foot grid based on Oklahoma coordinate system, south zone 1000-meter Universal Transverse Mercator grid ticks, zone 15, shown in blue
Areas covered by dashed light-blue pattern are subject to controlled inundation
Fine red dashed lines indicate selected fence and field lines where generally visible on aerial photographs. This information is unchecked



THIS MAP COMPLIES WITH NATIONAL MAP ACCURACY STANDARDS
FOR SALE BY U.S. GEOLOGICAL SURVEY, DENVER, COLORADO 80225, OR RESTON, VIRGINIA 22092
AND BY THE OKLAHOMA GEOLOGICAL SURVEY, NORMAN, OKLAHOMA 73069
A FOLDER DESCRIBING TOPOGRAPHIC MAPS AND SYMBOLS IS AVAILABLE ON REQUEST
MAP AND AIR PHOTO LIBRARY
University of Wisconsin, Madison

Revisions shown in purple compiled from aerial photographs taken 1977. Map edited 1978
This information not field checked

ROAD CLASSIFICATION

Primary highway, hard surface	Light-duty road, hard or improved surface
Secondary highway, hard surface	Unimproved road
Interstate Route	U.S. Route
	State Route



LAKE MC ALESTER, OKLA.
N3500—W9545/7.5
1971
PHOTOREVISED 1978
AMS 6854 III SE—SERIES V883