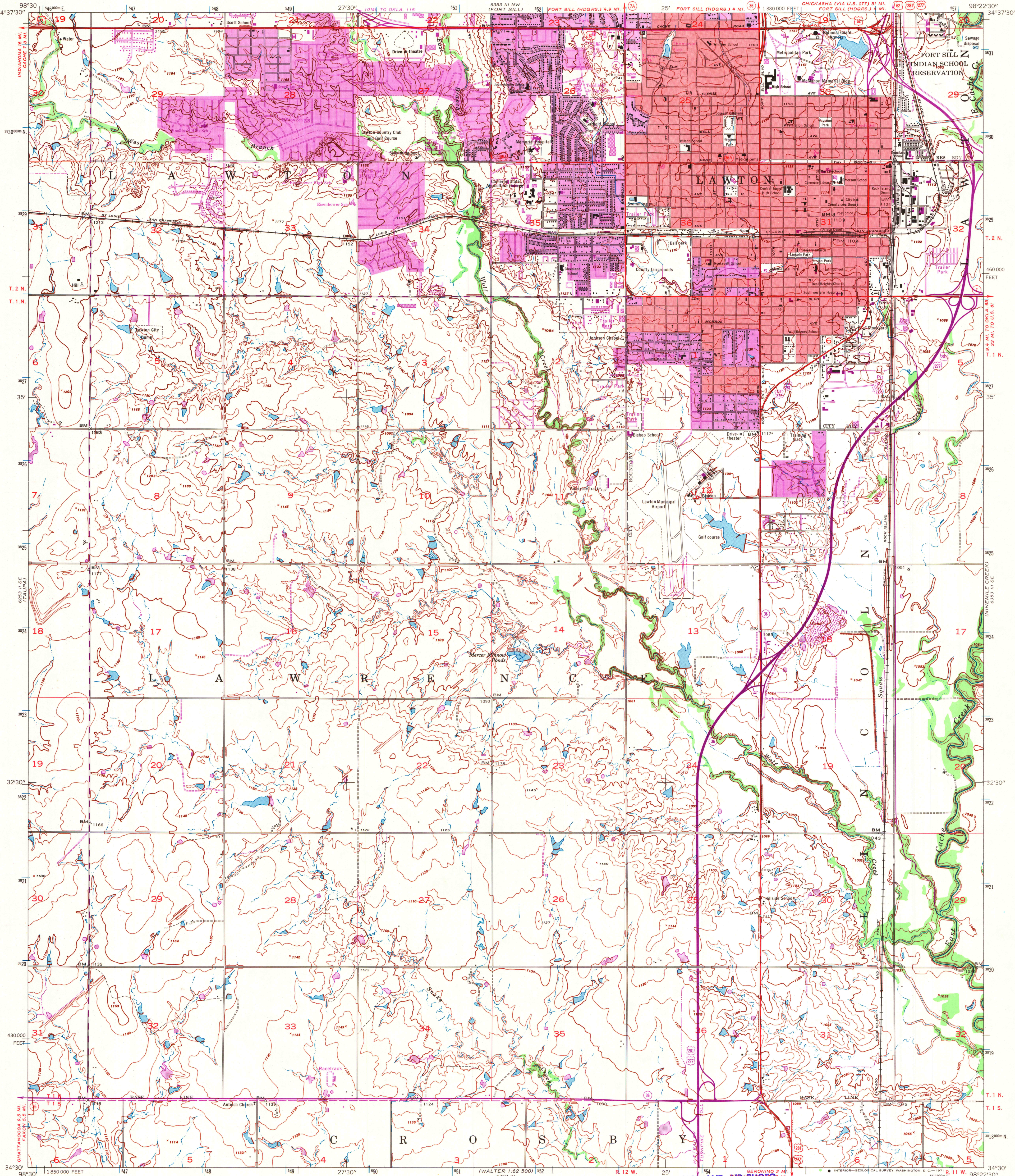


UNITED STATES  
DEPARTMENT OF THE INTERIOR  
GEOLOGICAL SURVEY

UNITED STATES  
DEPARTMENT OF THE ARMY  
CORPS OF ENGINEERS

LAWTON QUADRANGLE  
OKLAHOMA—COMANCHE CO.  
7.5 MINUTE SERIES (TOPOGRAPHIC)



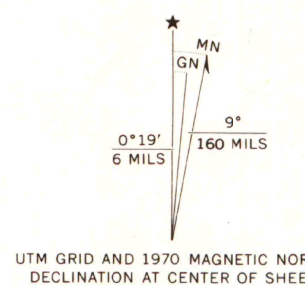
Mapped by the Army Map Service  
Published for civil use by the Geological Survey  
Control by USGS, USC&GS, USCE, and Oklahoma Geodetic Survey  
Topography by photogrammetric methods from aerial photographs  
taken 1947. Culture and drainage revised from aerial photographs  
taken 1954. Field check 1956

Polyconic projection. 1927 North American datum  
10,000-foot grid based on Oklahoma coordinate system, south zone  
1000-meter Universal Transverse Mercator grid ticks,  
zone 14, shown in blue

Red tint indicates area in which only landmark buildings are shown

Revisions shown in purple compiled by the Geological Survey from  
aerial photographs taken 1970. This information not field checked

Purple tint indicates extension of urban areas



THIS MAP COMPLIES WITH NATIONAL MAP ACCURACY STANDARDS  
FOR SALE BY U.S. GEOLOGICAL SURVEY, DENVER, COLORADO 80225, OR WASHINGTON, D.C. 20242  
AND BY THE OKLAHOMA GEOLOGICAL SURVEY, NORMAN, OKLAHOMA 73069  
A FOLDER DESCRIBING TOPOGRAPHIC MAPS AND SYMBOLS IS AVAILABLE ON REQUEST

JAN 25 1972  
University of Wisconsin  
OKLAHOMA  
QUADRANGLE LOCATION

ROAD CLASSIFICATION  
Heavy-duty ——— Light duty ———  
Medium-duty ——— Unimproved dirt ———  
U.S. Route ——— State Route ———

LAWTON, OKLA.  
SW/4 LAWTON 15' QUADRANGLE  
N 3430—W 9822.5/7.5

1956  
PHOTOREVISED 1970  
AMS 6353 III SW—SERIES V883