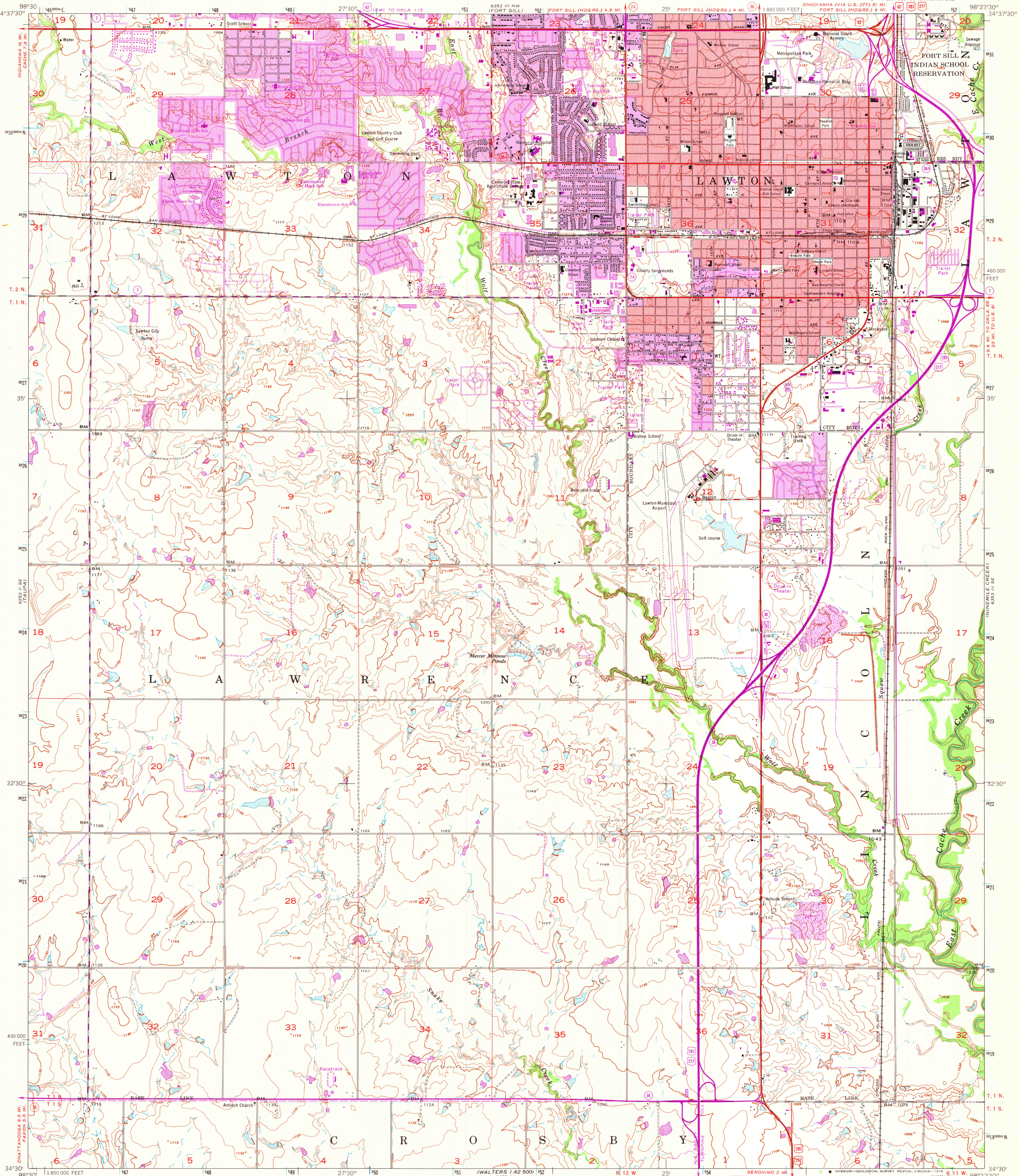


UNITED STATES
DEPARTMENT OF THE INTERIOR
GEOLOGICAL SURVEY

UNITED STATES
DEPARTMENT OF THE ARMY
CORPS OF ENGINEERS

LAWTON QUADRANGLE
OKLAHOMA—COMANCHE CO.
7.5 MINUTE SERIES (TOPOGRAPHIC)



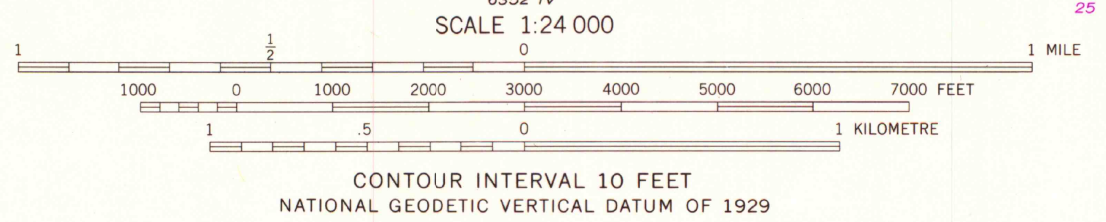
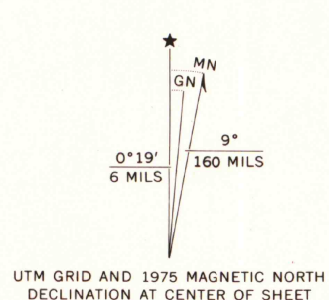
Map by the Army Map Service
Published for civil use by the Geological Survey
Control by USGS, USC&GS, USCE, and Oklahoma Geodetic Survey

Topography by photogrammetric methods from aerial photographs
taken 1947. Culture and drainage revised from aerial photographs
taken 1954. Field check 1956

Polyconic projection. 1927 North American datum
10,000-foot grid based on Oklahoma coordinate system, south zone
1000-metre Universal Transverse Mercator grid ticks,
zone 14, shown in blue

Red tint indicates area in which only landmark buildings are shown

Revisions shown in purple compiled by the Geological Survey from
aerial photographs taken 1970 and 1975. This information not field checked
Purple tint indicates extension of urban areas



THIS MAP COMPLIES WITH NATIONAL MAP ACCURACY STANDARDS
FOR SALE BY U.S. GEOLOGICAL SURVEY, DENVER, COLORADO 80225, OR RESTON, VIRGINIA 22092
AND BY THE OKLAHOMA GEOLOGICAL SURVEY, NORMAN, OKLAHOMA 73069
A FOLDER DESCRIBING TOPOGRAPHIC MAPS AND SYMBOLS IS AVAILABLE ON REQUEST



MAP AND AIR PHOTO
LIBRARY

AUG 17 1976

University of Wisconsin
Madison

LAWTON, OKLA.
SW/4 LAWTON 15' QUADRANGLE
N 3430—W 9822.5/7.5

1956

PHOTOREVISED 1970 AND 1975
AMS 6353 III SW—SERIES V883