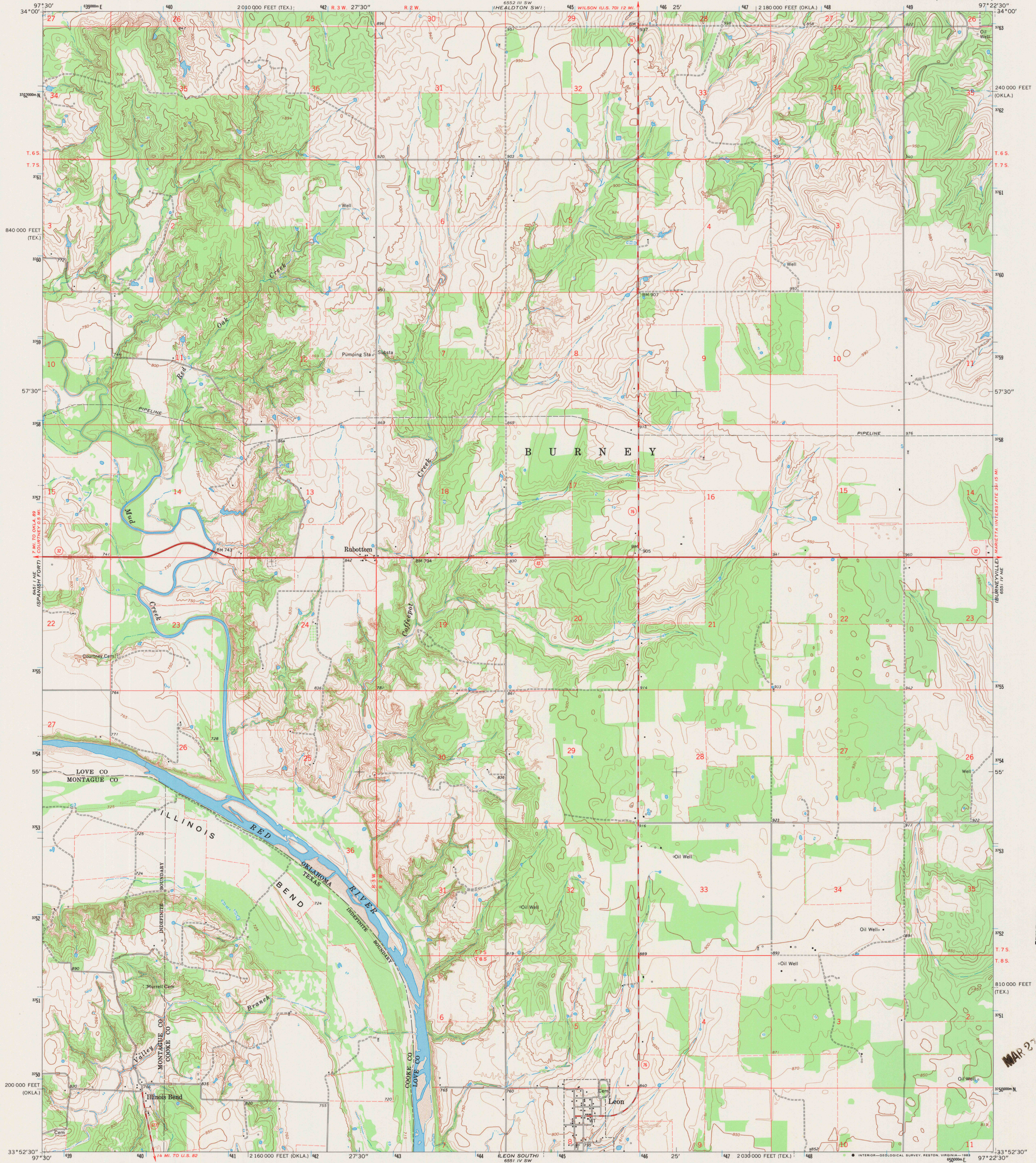
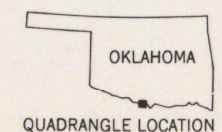
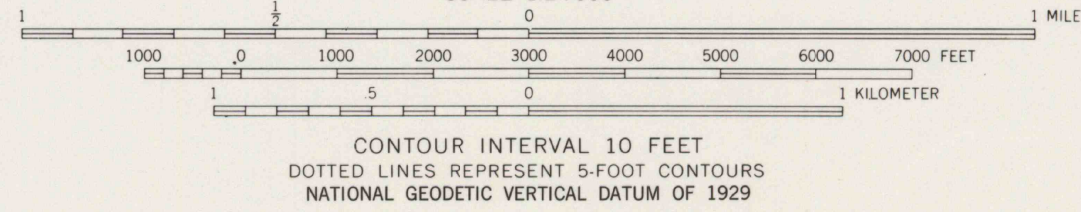
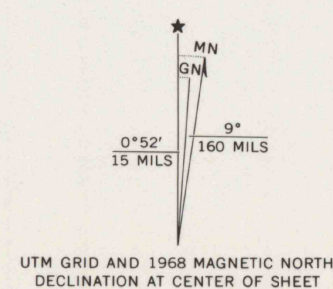


UNITED STATES
DEPARTMENT OF THE INTERIOR
GEOLOGICAL SURVEY

LEON NORTH QUADRANGLE
OKLAHOMA-TEXAS
7.5 MINUTE SERIES (TOPOGRAPHIC)



Mapped, edited, and published by the Geological Survey
Control by USGS and USC&GS
Topography by photogrammetric methods from aerial
photographs taken 1966. Field checked 1968
Polyconic projection, 1927 North American datum
10,000-foot grids based on Oklahoma coordinate system,
south zone, and Texas coordinate system north central zone
1000-meter Universal Transverse Mercator grid ticks,
zone 14, shown in blue
To place on the predicted North American Datum 1983
move the projection lines 7 meters south and
28 meters east as shown by dashed corner ticks
Fine red dashed lines indicate selected fence and field lines where
generally visible on aerial photographs. This information is unchecked
Map photoinspected 1979
No major culture or drainage changes observed



ROAD CLASSIFICATION
Primary highway, all weather, improved surface
Secondary highway, all weather, Unimproved road, fair or dry
hard surface weather
State Route

LEON NORTH, OKLA.-TEX.
N3352.5—W9722.5/7.5
1968
PHOTOINSPECTED 1979
AMS 6551 IV NW—SERIES V885

RETURN TO:
USGS AND HISTORICAL MAP ARCHIVES

MAR 27 1984