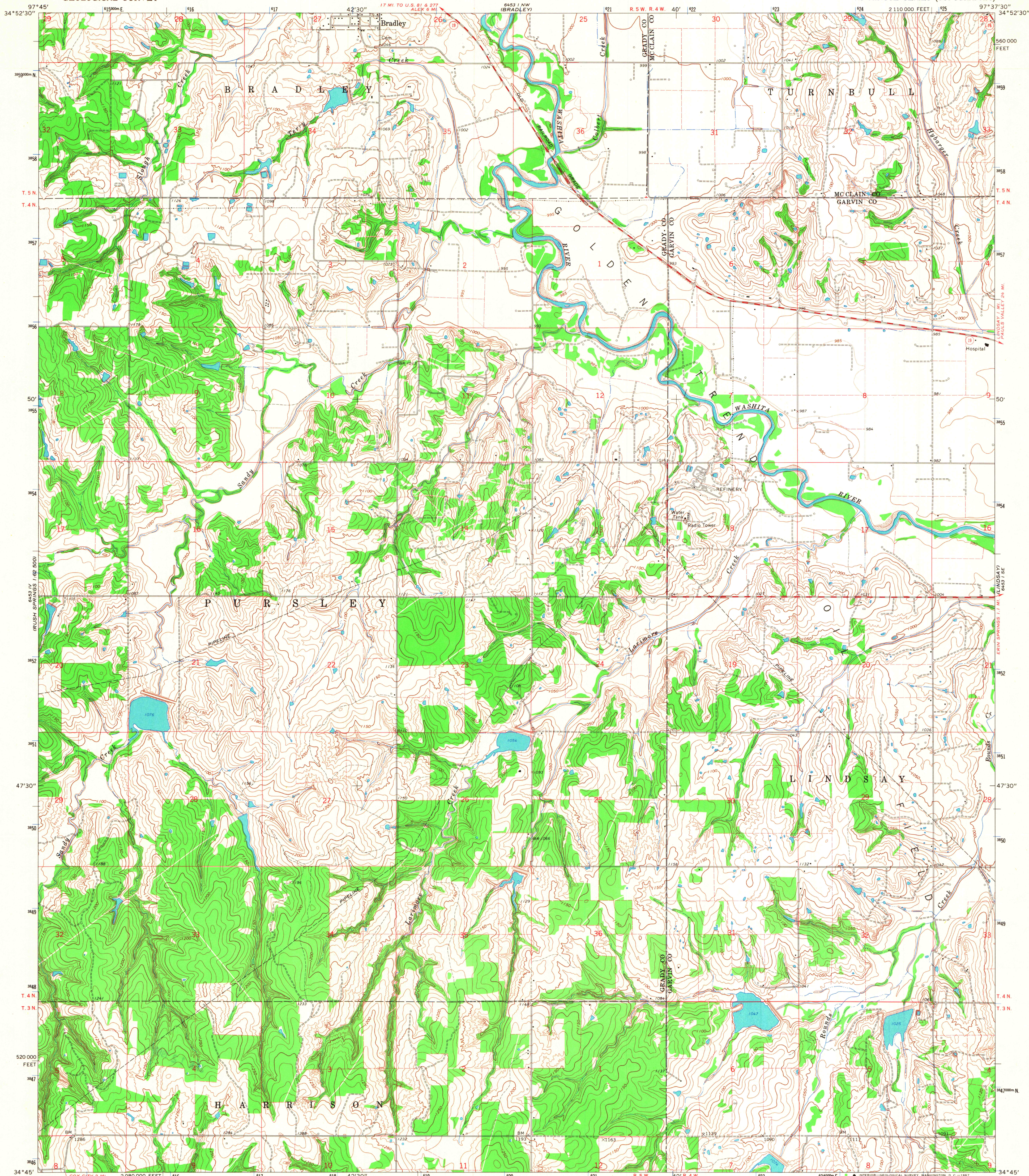


UNITED STATES
DEPARTMENT OF THE INTERIOR
GEOLOGICAL SURVEY

LINDSAY SW QUADRANGLE
OKLAHOMA
7.5 MINUTE SERIES (TOPOGRAPHIC)



Maped, edited, and published by the Geological Survey
Control by USGS, USC&GS, and Oklahoma Geological Survey
Topography by photogrammetric methods from aerial
photographs taken 1963. Field checked 1966
Polyconic projection. 1927 North American datum
10,000-foot grid based on Oklahoma coordinate system, south zone
1000-meter Universal Transverse Mercator grid ticks
zone 14, shown in blue
Fine red dashed lines indicate selected fence and field lines where
generally visible on aerial photographs. This information is unchecked

UTM GRID AND 1966 MAGNETIC NORTH
DECLINATION AT CENTER OF SHEET

SCALE 1:24,000
1 1000 0 1000 2000 3000 4000 5000 6000 7000 FEET
1 5 0 1 KILOMETER
CONTOUR INTERVAL 10 FEET
DOTTED LINES REPRESENT 5-FOOT CONTOURS
DATUM IS MEAN SEA LEVEL

MAP AND AIR PHOTO LIBRARY
University of Wisconsin



ROAD CLASSIFICATION
Medium-duty ——— Light-duty ———
Unimproved dirt ———
State Route

THIS MAP COMPLIES WITH NATIONAL MAP ACCURACY STANDARDS
FOR SALE BY U.S. GEOLOGICAL SURVEY, DENVER, COLORADO 80225, OR WASHINGTON, D.C. 20242
A FOLDER DESCRIBING TOPOGRAPHIC MAPS AND SYMBOLS IS AVAILABLE ON REQUEST

LINDSAY SW, OKLA.
N3445—W9737.5/7.5

1966

AMS 6453 1 SW—SERIES V883