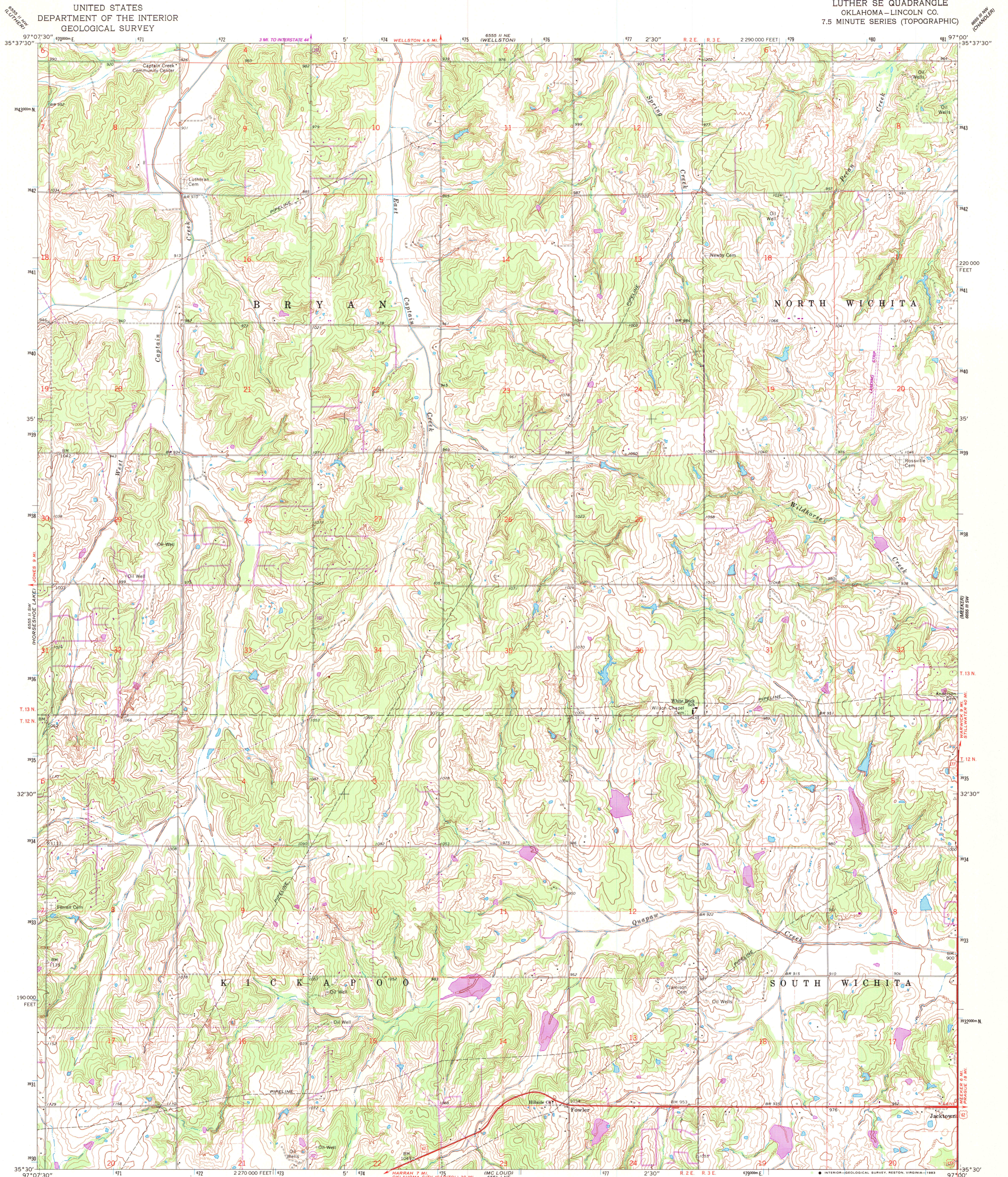


UNITED STATES  
DEPARTMENT OF THE INTERIOR  
GEOLOGICAL SURVEY

LUTHER SE QUADRANGLE  
OKLAHOMA—LINCOLN CO.  
7.5 MINUTE SERIES (TOPOGRAPHIC)



Mapped, edited, and published by the Geological Survey

Control by USGS and USC&GS

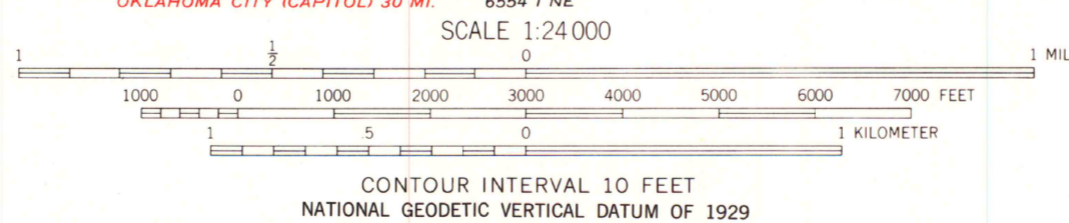
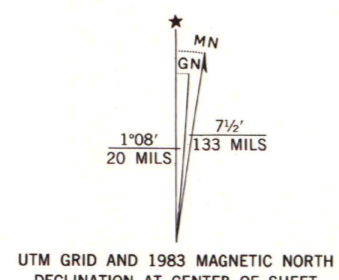
Topography by photogrammetric methods from aerial photographs taken 1964. Field checked 1966

Polyconic projection. 1927 North American datum 10,000-foot grid based on Oklahoma coordinate system, north zone 1000-meter Universal Transverse Mercator grid ticks, zone 14, shown in blue

Fine red dashed lines indicate selected fence and field lines where generally visible on aerial photographs. This information is unchecked

To place on the predicted North American Datum 1983, move the projection lines 4 meters south and 27 meters east as shown by dashed corner ticks

Revisions shown in purple compiled from aerial photographs taken 1981 and other sources. This information not field checked. Map edited 1983



THIS MAP COMPLIES WITH NATIONAL MAP ACCURACY STANDARDS  
FOR SALE BY U. S. GEOLOGICAL SURVEY, DENVER, COLORADO 80225, OR RESTON, VIRGINIA 22092  
AND OKLAHOMA GEOLOGICAL SURVEY, NORMAN, OKLAHOMA 73069  
A FOLDER DESCRIBING TOPOGRAPHIC MAPS AND SYMBOLS IS AVAILABLE ON REQUEST



MAP LIBRARY  
MAY 21 1984  
University of Wisconsin  
Madison

ROAD CLASSIFICATION  
Heavy-duty ——— Light-duty ———  
Unimproved dirt ———  
U. S. Route

LUTHER SE, OKLA.

N 3530—W 9700/7.5

1966  
PHOTOREVISED 1983  
DMA 6555 II SE—SERIES V883