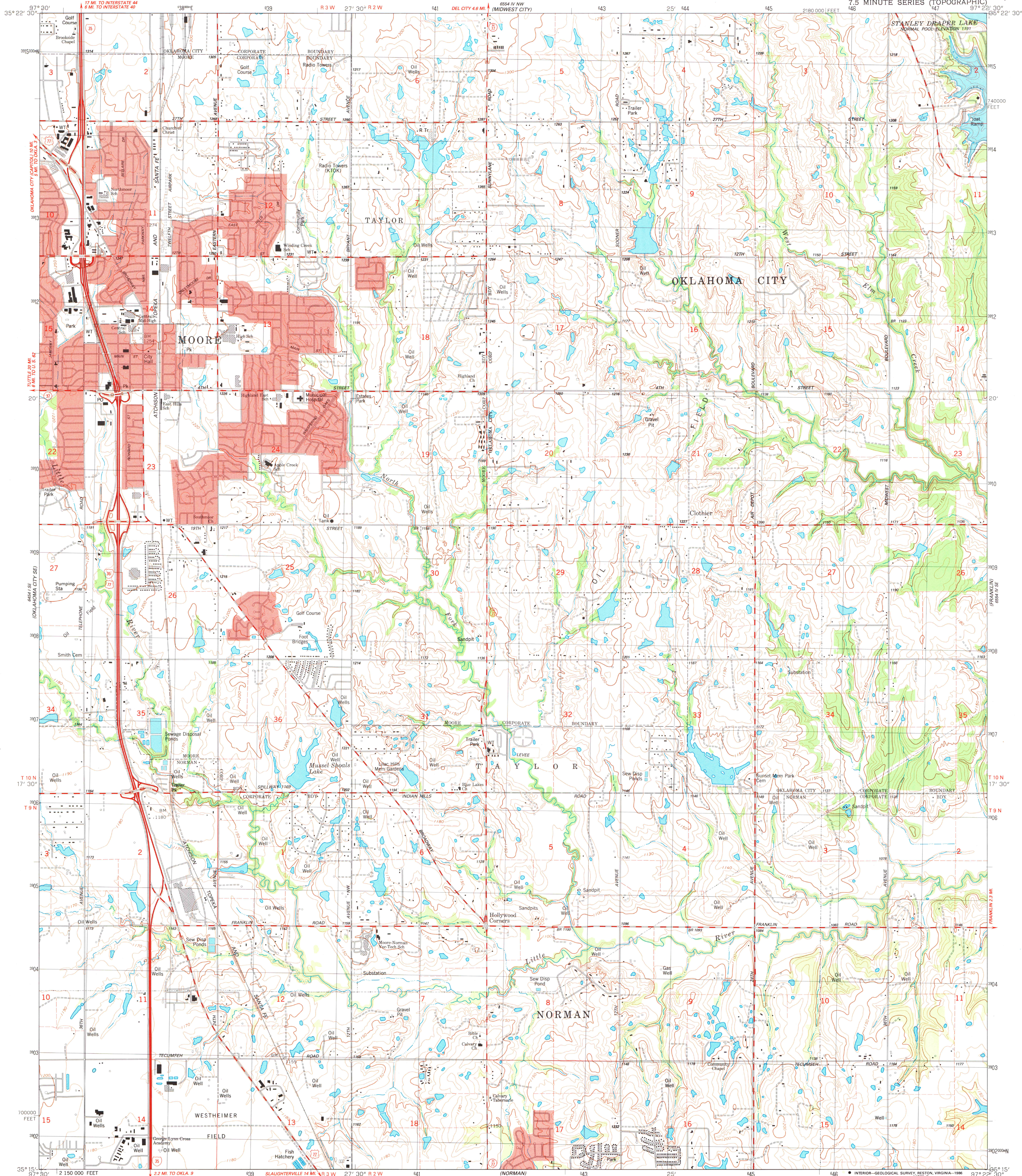
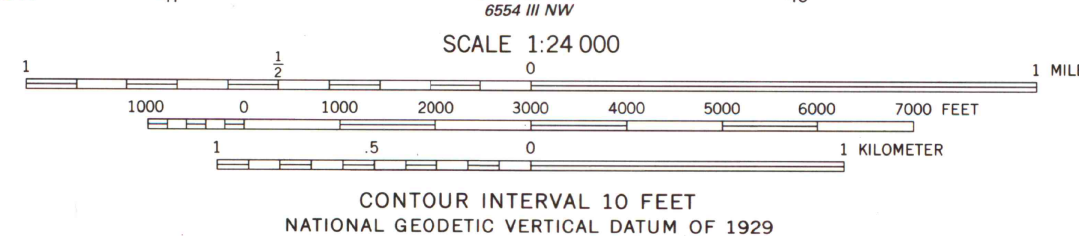
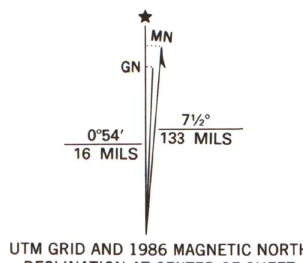


UNITED STATES
DEPARTMENT OF THE INTERIOR
GEOLOGICAL SURVEY

MOORE QUADRANGLE
OKLAHOMA-CLEVELAND CO.
7.5 MINUTE SERIES (TOPOGRAPHIC)



Mapped, edited, and published by the Geological Survey
Control by USGS and NOS/NOAA
Topography by photogrammetric methods from aerial photographs
taken 1954. Field checked 1956. Revised from aerial photographs
taken 1984. Field checked 1985. Map edited 1986
Projection and 10,000-foot grid ticks: Oklahoma coordinate
system, south zone (Lambert conformal conic)
1000-meter Universal Transverse Mercator grid, zone 14
1927 North American Datum
To place on the predicted North American Datum 1983,
move the projection lines 4 meters south and
28 meters east as shown by dashed corner ticks
Red tint indicates areas in which only landmark buildings are shown
Fine red dashed lines indicate selected fence and field lines where
generally visible on aerial photographs. This information is uncheck



ARTHUR H. ROBINSON MAP LIBRARY
UNIVERSITY OF WISCONSIN-MADISON
MOORE, OKLA.
35097-C4-TF-024
1986

AUG 21 1987

DMA 6554 IV SW-SERIES Y883

U.S. Regional
Depository Copy
DO NOT DISCARD