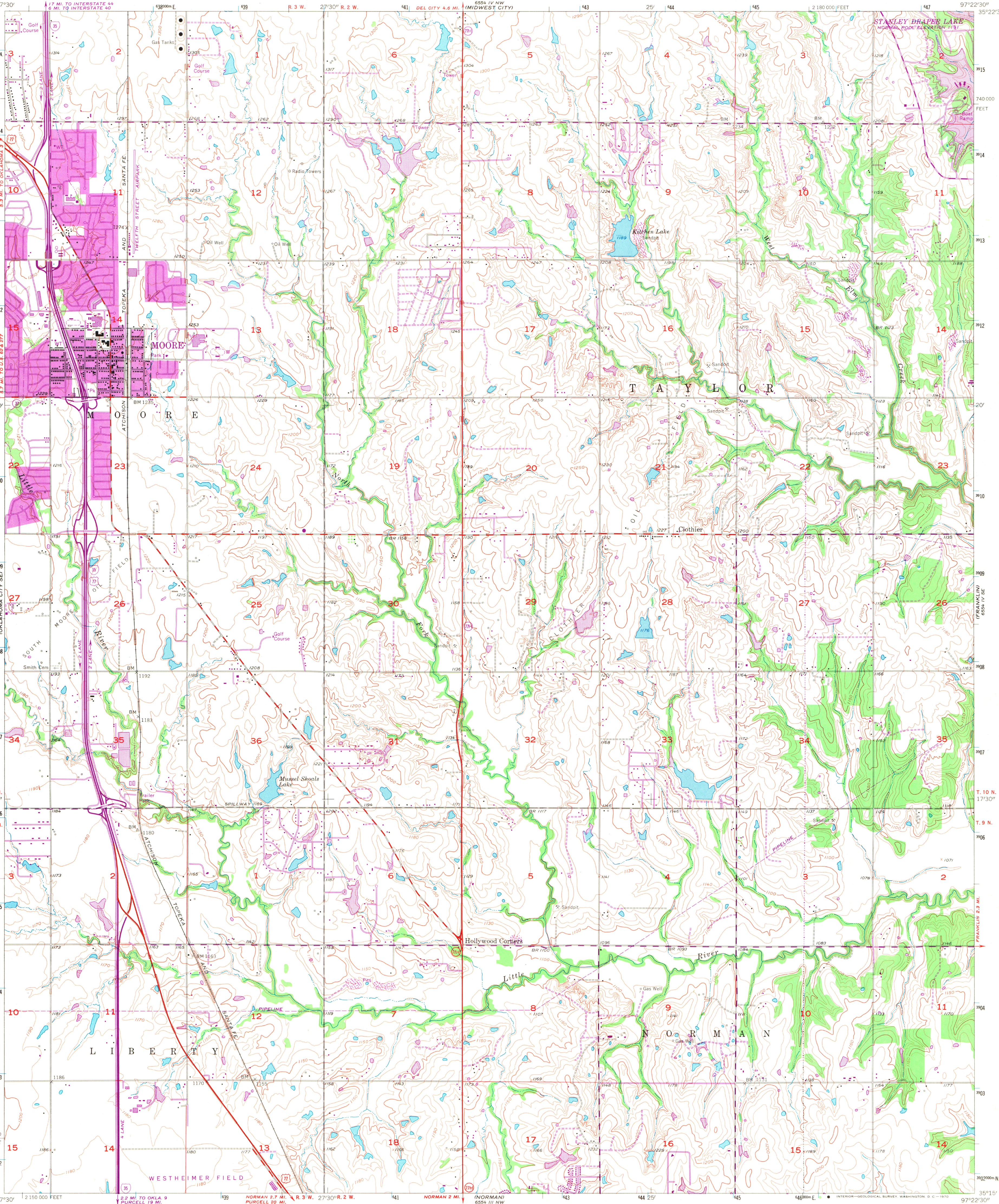


UNITED STATES
DEPARTMENT OF THE INTERIOR
GEOLOGICAL SURVEY

MOORE QUADRANGLE
OKLAHOMA-CLEVELAND CO.
7.5 MINUTE SERIES (TOPOGRAPHIC)
SW 1/4 MOORE 15' QUADRANGLE



Mapped, edited, and published by the Geological Survey
Control by USGS, USCGS, and Oklahoma Geodetic Survey
Topography from aerial photographs by photogrammetric methods
Aerial photographs taken 1954. Field check 1956
Polyconic projection. 1927 North American datum
10,000-foot grid based on Oklahoma coordinate system, south zone
1000-meter Universal Transverse Mercator grid ticks,
zone 14, shown in blue
Revisions shown in purple compiled from aerial photographs
taken 1969. This information not field checked
Purple tint indicates extension of urban areas

UTM GRID AND 1969 MAGNETIC NORTH
DECLINATION AT CENTER OF SHEET

THIS MAP COMPLIES WITH NATIONAL MAP ACCURACY STANDARDS
FOR SALE BY U.S. GEOLOGICAL SURVEY, DENVER, COLORADO 80225, OR WASHINGTON, D. C. 20242
AND BY THE OKLAHOMA GEOLOGICAL SURVEY, NORMAN, OKLAHOMA 73069
A FOLDER DESCRIBING TOPOGRAPHIC MAPS AND SYMBOLS IS AVAILABLE ON REQUEST

ROAD CLASSIFICATION
Heavy-duty ——— Light-duty ———
Medium-duty ——— Unimproved dirt ———
U.S. Route ——— State Route ———
Interstate Route ———
MOORE, OKLA.
SW 1/4 MOORE 15' QUADRANGLE
N 3515-W 9722.5/7.5
1956
PHOTOREVISED 1969
AMS 6554 IV SW-SERIES V883