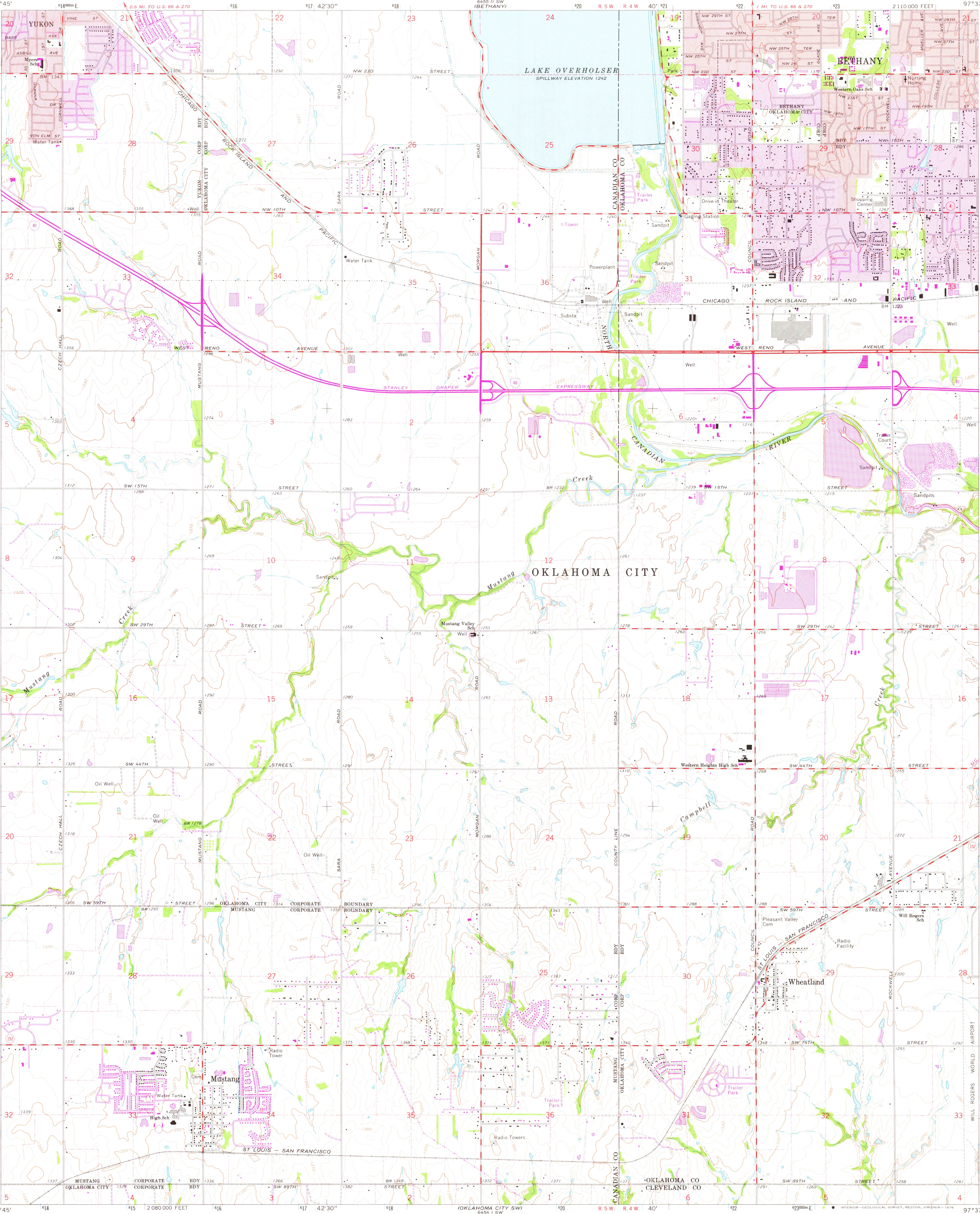
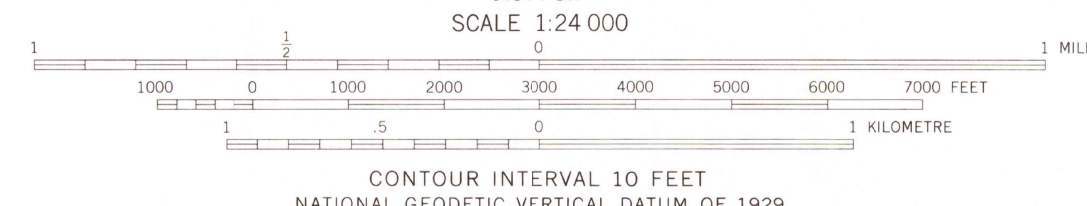
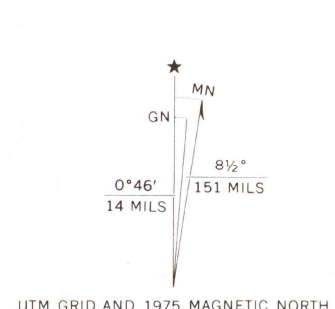


UNITED STATES  
DEPARTMENT OF THE INTERIOR  
GEOLOGICAL SURVEY

MUSTANG QUADRANGLE  
OKLAHOMA  
7.5 MINUTE SERIES (TOPOGRAPHIC)  
NW/4 OKLAHOMA CITY 15' QUADRANGLE



Mapped, edited, and published by the Geological Survey  
Control by USGS and USC&GS  
Topography by photogrammetric methods from aerial  
photographs taken 1964. Field checked 1966  
Polyconic projection, 1927 North American datum  
10,000-foot grid based on Oklahoma coordinate system, north zone  
1000-metre Universal Transverse Mercator grid ticks,  
zone 14, shown in blue  
Red tint indicates areas in which only landmark buildings are shown  
Fine red dashed lines indicate selected fence and field lines where  
generally visible on aerial photographs. This information is unchecked  
Revisions shown in purple compiled from aerial photographs  
taken 1975. This information not field checked  
Purple tint indicates extension of urban areas



THIS MAP COMPLIES WITH NATIONAL MAP ACCURACY STANDARDS  
FOR SALE BY U.S. GEOLOGICAL SURVEY, DENVER, COLORADO 80225, OR RESTON, VIRGINIA 22092  
AND BY THE OKLAHOMA GEOLOGICAL SURVEY, NORMAN, OKLAHOMA 73069  
A FOLDER DESCRIBING TOPOGRAPHIC MAPS AND SYMBOLS IS AVAILABLE ON REQUEST

**ROAD CLASSIFICATION**

Heavy-duty	Light-duty
Medium-duty	Unimproved dirt
Interstate Route	State Route

**MAP AND AIR PHOTO LIBRARY**

**OCT 15 1976**

**MUSTANG, OKLA.**  
NW/4 OKLAHOMA CITY 15' QUADRANGLE  
N3522.5—W9737.5/7.5

**1966**  
**PHOTOREVISED 1975**  
AMS 6454 I NW—SERIES V883

University of Wisconsin  
Madison