

UNITED STATES  
DEPARTMENT OF THE INTERIOR  
GEOLOGICAL SURVEY



RIPLEY QUADRANGLE  
OKLAHOMA—PAYNE CO.  
7.5 MINUTE SERIES (TOPOGRAPHIC)  
SW/4 RIPLEY 15' QUADRANGLE  
2 330 000 FEET

6656 III NW  
(GLENCOE)

6656 III NW  
(GLENCOE)

6656 III NW  
(GLENCOE)

6656 III NW  
(GLENCOE)

6656 III NW  
(GLENCOE)

6656 III NW  
(GLENCOE)

6656 III NW  
(GLENCOE)

6656 III NW  
(GLENCOE)

6656 III NW  
(GLENCOE)

6656 III NW  
(GLENCOE)

6656 III NW  
(GLENCOE)

6656 III NW  
(GLENCOE)

6656 III NW  
(GLENCOE)

6656 III NW  
(GLENCOE)

6656 III NW  
(GLENCOE)

6656 III NW  
(GLENCOE)

6656 III NW  
(GLENCOE)

6656 III NW  
(GLENCOE)

6656 III NW  
(GLENCOE)

6656 III NW  
(GLENCOE)

6656 III NW  
(GLENCOE)

6656 III NW  
(GLENCOE)

6656 III NW  
(GLENCOE)

6656 III NW  
(GLENCOE)

6656 III NW  
(GLENCOE)

6656 III NW  
(GLENCOE)

6656 III NW  
(GLENCOE)

6656 III NW  
(GLENCOE)

6656 III NW  
(GLENCOE)

6656 III NW  
(GLENCOE)

6656 III NW  
(GLENCOE)

6656 III NW  
(GLENCOE)

6656 III NW  
(GLENCOE)

6656 III NW  
(GLENCOE)

6656 III NW  
(GLENCOE)

6656 III NW  
(GLENCOE)

6656 III NW  
(GLENCOE)

6656 III NW  
(GLENCOE)

6656 III NW  
(GLENCOE)

6656 III NW  
(GLENCOE)

6656 III NW  
(GLENCOE)

6656 III NW  
(GLENCOE)

6656 III NW  
(GLENCOE)

6656 III NW  
(GLENCOE)

6656 III NW  
(GLENCOE)

6656 III NW  
(GLENCOE)

6656 III NW  
(GLENCOE)

6656 III NW  
(GLENCOE)

6656 III NW  
(GLENCOE)

6656 III NW  
(GLENCOE)

6656 III NW  
(GLENCOE)

6656 III NW  
(GLENCOE)

6656 III NW  
(GLENCOE)

6656 III NW  
(GLENCOE)

6656 III NW  
(GLENCOE)

6656 III NW  
(GLENCOE)

6656 III NW  
(GLENCOE)

6656 III NW  
(GLENCOE)

6656 III NW  
(GLENCOE)

6656 III NW  
(GLENCOE)

6656 III NW  
(GLENCOE)

6656 III NW  
(GLENCOE)

6656 III NW  
(GLENCOE)

6656 III NW  
(GLENCOE)

6656 III NW  
(GLENCOE)

6656 III NW  
(GLENCOE)

6656 III NW  
(GLENCOE)

6656 III NW  
(GLENCOE)

6656 III NW  
(GLENCOE)

6656 III NW  
(GLENCOE)

6656 III NW  
(GLENCOE)

6656 III NW  
(GLENCOE)

6656 III NW  
(GLENCOE)

6656 III NW  
(GLENCOE)

6656 III NW  
(GLENCOE)

6656 III NW  
(GLENCOE)

6656 III NW  
(GLENCOE)

6656 III NW  
(GLENCOE)

6656 III NW  
(GLENCOE)

6656 III NW  
(GLENCOE)

6656 III NW  
(GLENCOE)

6656 III NW  
(GLENCOE)

6656 III NW  
(GLENCOE)

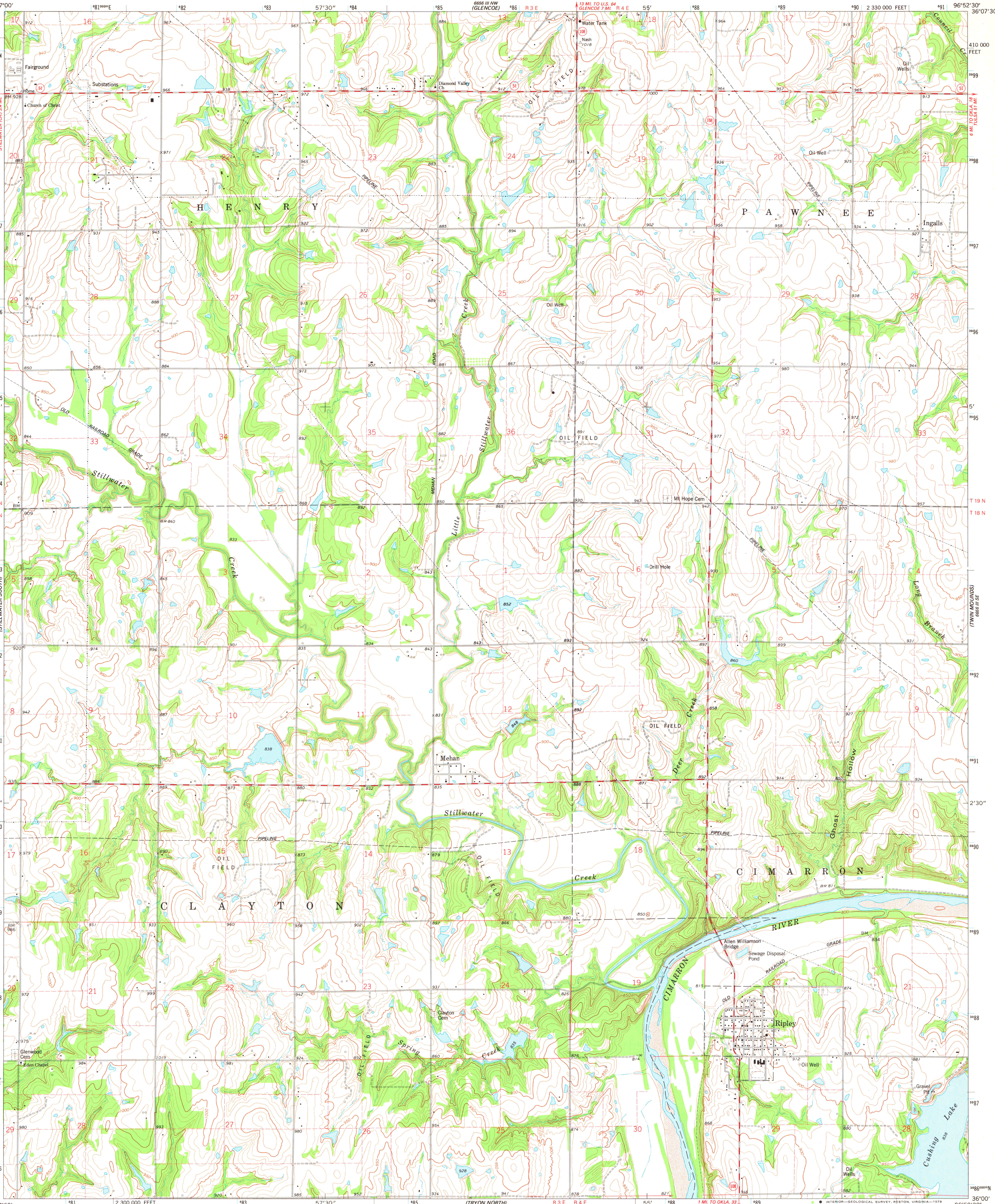
6656 III NW  
(GLENCOE)

6656 III NW  
(GLENCOE)

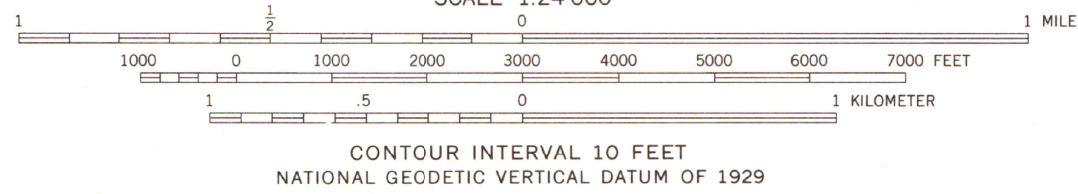
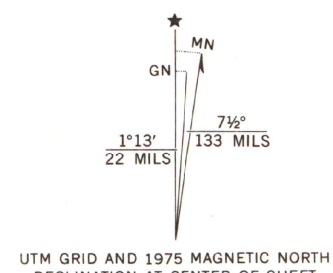
6656 III NW  
(GLENCOE)

6656 III NW  
(GLENCOE)

6656 III NW  
(GLENCOE)



Mapped, edited, and published by the Geological Survey  
Control by USGS and NOS/NOAA  
Topography by photogrammetric methods from aerial  
photographs taken 1974. Field checked 1975  
Projection and 10,000-foot grid ticks: Oklahoma coordinate  
system, north zone (Lambert conformal conic)  
1000-meter Universal Transverse Mercator grid ticks,  
zone 14, shown in blue. 1927 North American datum  
Fine red dashed lines indicate selected fence and field lines where  
generally visible on aerial photographs. This information is unchecked



THIS MAP COMPLIES WITH NATIONAL MAP ACCURACY STANDARDS  
FOR SALE BY U. S. GEOLOGICAL SURVEY, DENVER, COLORADO 80225, OR RESTON, VIRGINIA 22092  
AND BY THE OKLAHOMA GEOLOGICAL SURVEY, NORMAN, OKLAHOMA 73069  
A FOLDER DESCRIBING TOPOGRAPHIC MAPS AND SYMBOLS IS AVAILABLE ON REQUEST



ROAD CLASSIFICATION  
Primary highway, hard surface  
Secondary highway, hard surface  
Interstate Route  
Light-duty road, hard or improved surface  
Unimproved road  
U. S. Route  
State Route

RIPLEY, OKLA.  
SW/4 RIPLEY 15' QUADRANGLE  
N3600 — W9652.5/7.5

MAP AND AIR PHOTO  
LIBRARY

JUN 13 1979

1975  
AMS 6656 III SW—SERIES V883 University of Wisconsin  
Madison