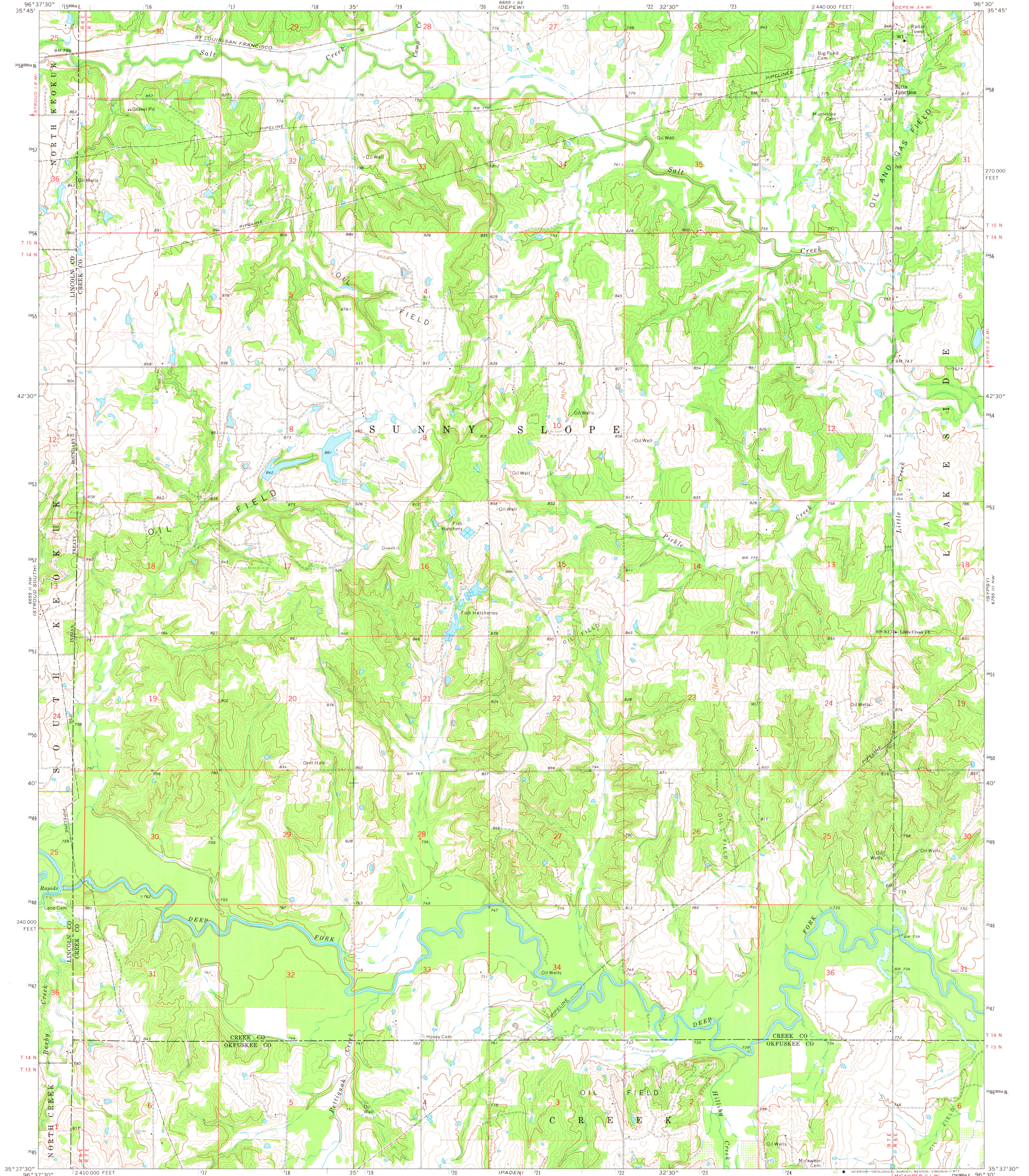


UNITED STATES
DEPARTMENT OF THE INTERIOR
GEOLOGICAL SURVEY

STATE OF OKLAHOMA

RITTS JUNCTION QUADRANGLE
OKLAHOMA
7.5 MINUTE SERIES (TOPOGRAPHIC)
NE 4 STROUD 15' QUADRANGLE



Mapped, edited, and published by the Geological Survey
in cooperation with the Oklahoma Highway Department,
Oklahoma Water Resources Board, and Oklahoma State Soil
Conservation Board

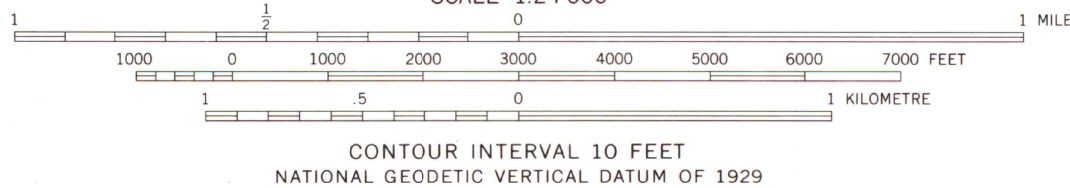
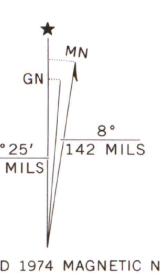
Control by USGS and NOS/NOAA

Topography by photogrammetric methods from aerial
photographs taken 1973. Field checked 1974

Projection and 10,000-foot grid ticks: Oklahoma coordinate
system, north zone (Lambert conformal conic)

1000-metre Universal Transverse Mercator grid ticks,
zone 14, shown in blue. 1927 North American datum

Fine red dashed lines indicate selected fence and field lines where
generally visible on aerial photographs. This information is unchecked



THIS MAP COMPLIES WITH NATIONAL MAP ACCURACY STANDARDS
FOR SALE BY U. S. GEOLOGICAL SURVEY, DENVER, COLORADO 80225, OR RESTON, VIRGINIA 22092
AND BY THE OKLAHOMA GEOLOGICAL SURVEY, NORMAN, OKLAHOMA 73069
A FOLDER DESCRIBING TOPOGRAPHIC MAPS AND SYMBOLS IS AVAILABLE ON REQUEST



ROAD CLASSIFICATION
Primary highway, hard surface
Secondary highway, hard surface
Unimproved road
Interstate Route
U. S. Route
State Route

MAP AND AIR PHOTO
LIBRARY

JUN 8 1977

University of Wisconsin
Madison

RITTS JUNCTION, OKLA.

NE 4 STROUD 15' QUADRANGLE
N 3537.5-W 9630.7.5

1974

AMS 6655 II NE-SERIES V883