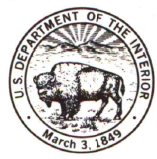


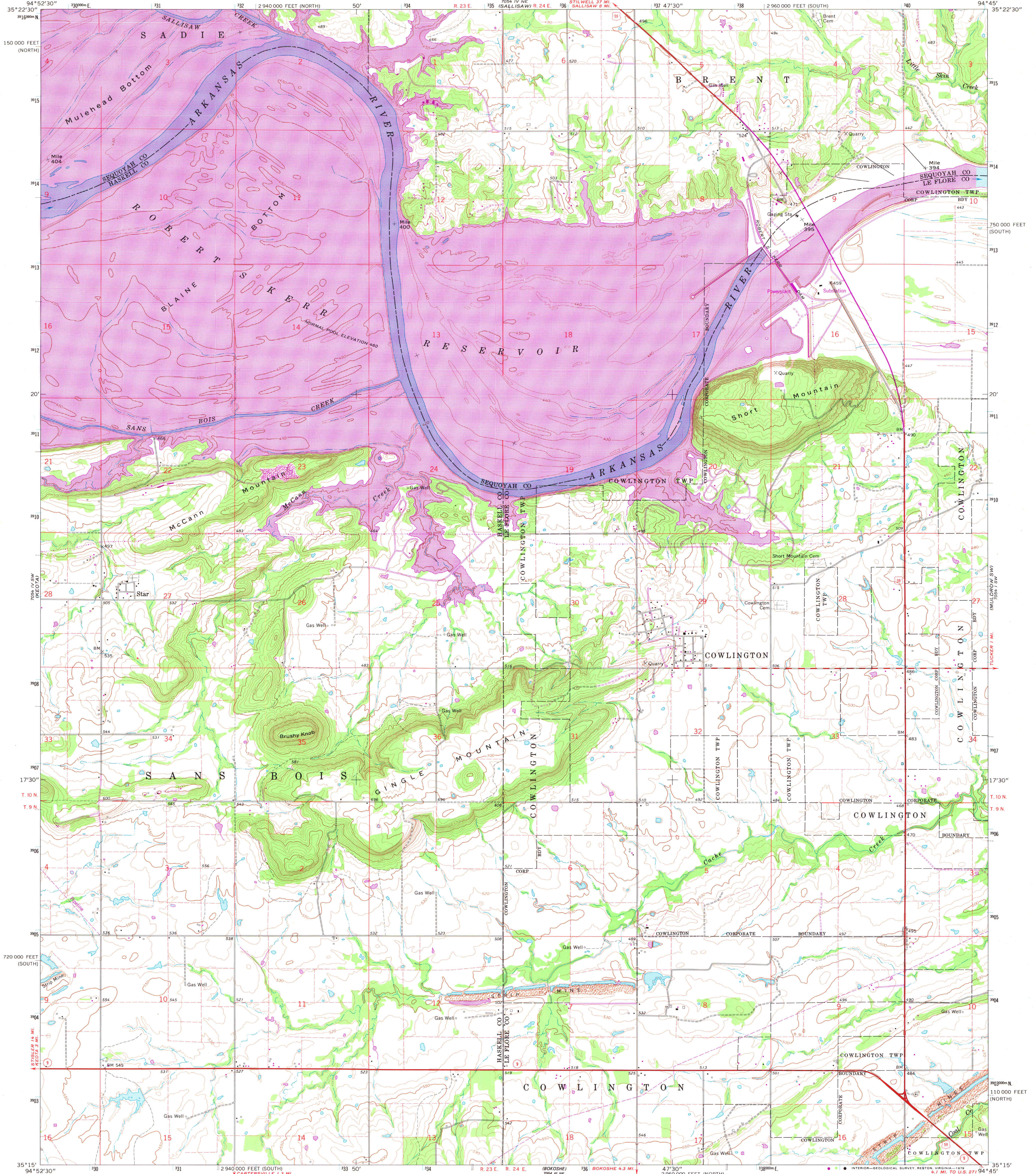
7054 IV SE
(NAD 83)

UNITED STATES
DEPARTMENT OF THE INTERIOR
GEOLOGICAL SURVEY

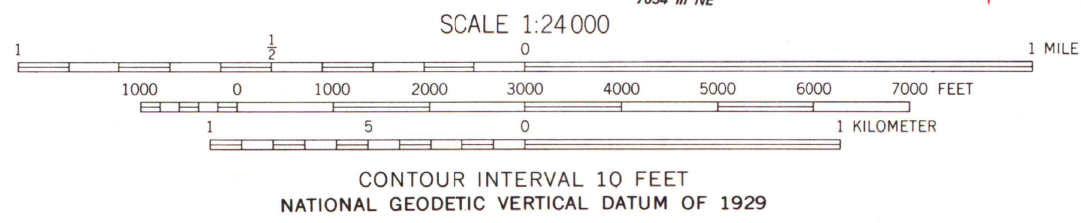
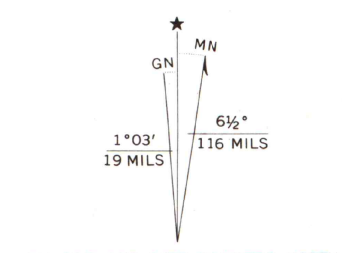


ROBERT S. KERR DAM QUADRANGLE
OKLAHOMA
7.5 MINUTE SERIES (TOPOGRAPHIC)

7054 IV NW
(NAD 83)



Mapped, edited, and published by the Geological Survey
Control by USGS and USC&GS
Topography by photogrammetric methods from aerial
photographs taken 1963 and planetable surveys 1967
Polyconic projection, 1927 North American datum
10,000-foot grids based on Oklahoma coordinate system,
south and north zones
1000-meter Universal Transverse Mercator grid ticks,
zone 15, shown in blue
Fine red dashed lines indicate selected fence and field lines where
generally visible on aerial photographs. This information is unchecked
Revisions shown in purple and woodland compiled from
aerial photographs taken 1975 and other source data
This information not field checked. Map edited 1979



MAP AND AIR PHOTO LIBRARY
University of Wisconsin, Madison



ROAD CLASSIFICATION	
Heavy-duty	Light-duty
Medium-duty	Unimproved dirt
U.S. Route	State Route

ROBERT S. KERR DAM, OKLA.
N3515-W9445/7.5

1967
PHOTOREVISED 1979
AMS 7054 IV SE-SERIES V883

THIS MAP COMPLIES WITH NATIONAL MAP ACCURACY STANDARDS
FOR SALE BY U. S. GEOLOGICAL SURVEY, DENVER, COLORADO 80225, OR RESTON, VIRGINIA 22092
AND BY OKLAHOMA GEOLOGICAL SURVEY, NORMAN, OKLAHOMA 73069
A FOLDER DESCRIBING TOPOGRAPHIC MAPS IS AVAILABLE ON REQUEST