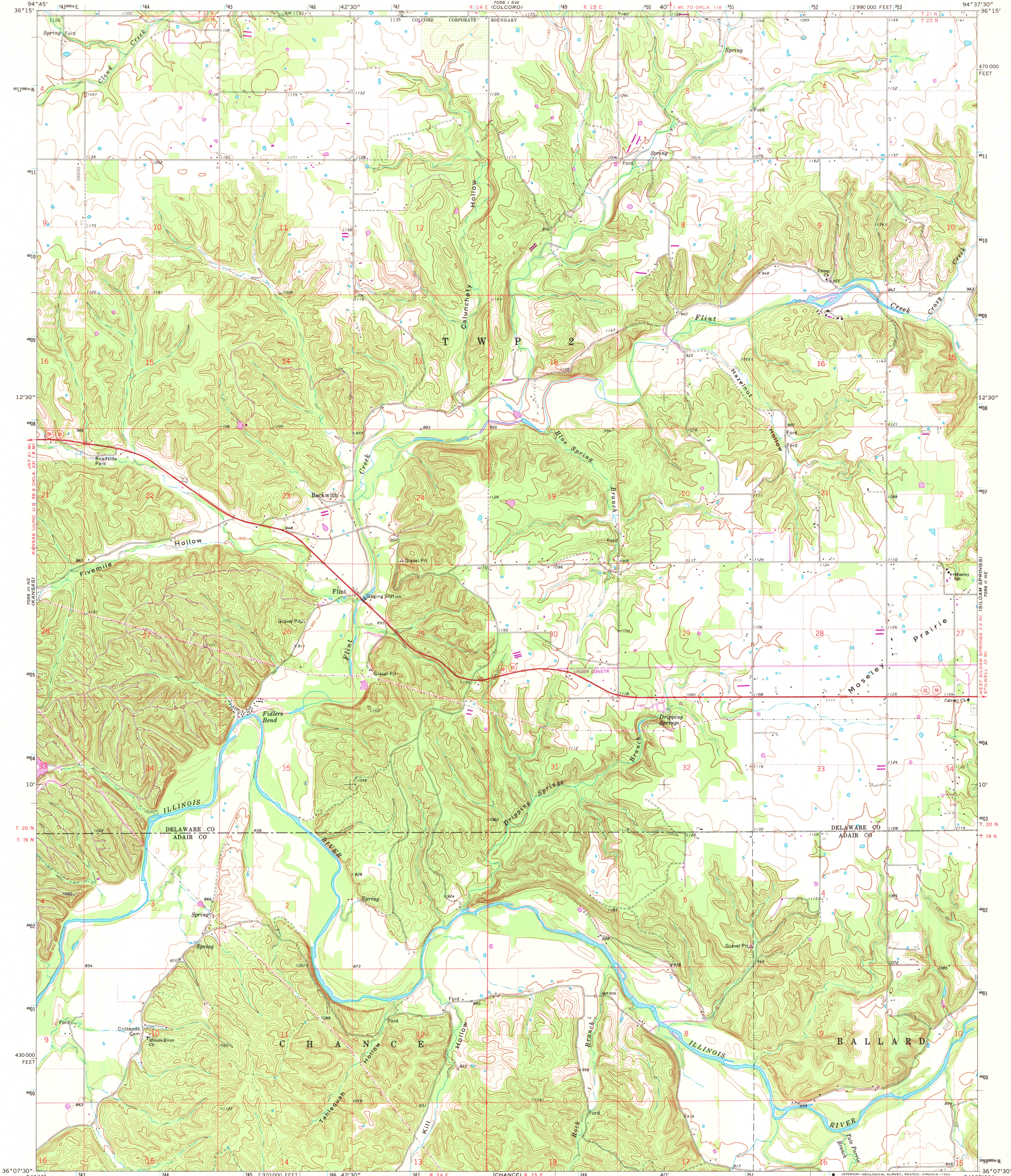


UNITED STATES
DEPARTMENT OF THE INTERIOR
GEOLOGICAL SURVEY

SILOAM SPRINGS NW QUADRANGLE
OKLAHOMA
7.5 MINUTE SERIES (TOPOGRAPHIC)



Mapped, edited, and published by the Geological Survey

Control by USGS and USC&GS

Topography by photogrammetric methods from aerial

photographs taken 1971. Field checked 1972

Projection and 10,000-foot grid ticks: Oklahoma coordinate

system, north zone (Lambert conformal conic)

1000-meter Universal Transverse Mercator grid ticks,

zone 15, shown in blue. 1927 North American datum

Fine red dashed lines indicate selected fence and field lines where

generally visible on aerial photographs. This information is unchecked

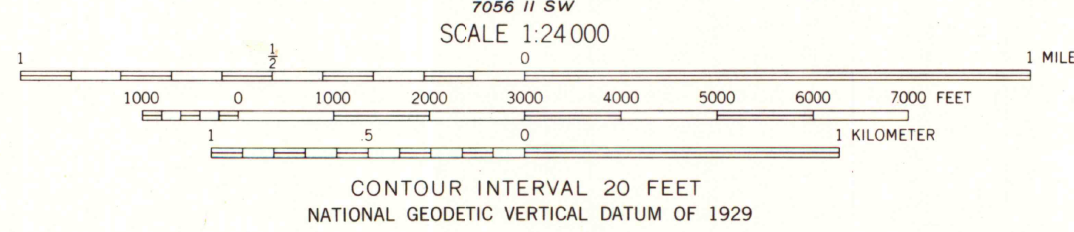
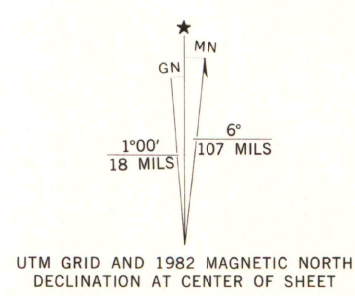
To place on the predicted North American Datum 1983

move the projection lines 5 meters south and

19 meters east as shown by dashed corner ticks

Revisions shown in purple compiled from aerial photographs taken 1980 and

other sources. This information not field checked. Map edited 1982



THIS MAP COMPLIES WITH NATIONAL MAP ACCURACY STANDARDS
FOR SALE BY U.S. GEOLOGICAL SURVEY, DENVER, COLORADO 80225, OR RESTON, VIRGINIA 22092
AND BY THE OKLAHOMA GEOLOGICAL SURVEY, NORMAN, OKLAHOMA 73069
A FOLDER DESCRIBING TOPOGRAPHIC MAPS AND SYMBOLS IS AVAILABLE ON REQUEST



ROAD CLASSIFICATION	
Primary highway, hard surface	Light-duty road, hard or improved surface
Secondary highway, hard surface	Unimproved road
Interstate Route	U. S. Route
	State Route

MAP AND AIR PHOTO
LIBRARY

NOV 15 1982

University of Wisconsin
J. S. JON

SILOAM SPRINGS NW, OKLA.
N3607.5-W9437.5/7.5

1972
PHOTOREVISED 1982
DMA 7056 II NW-SERIES V883