

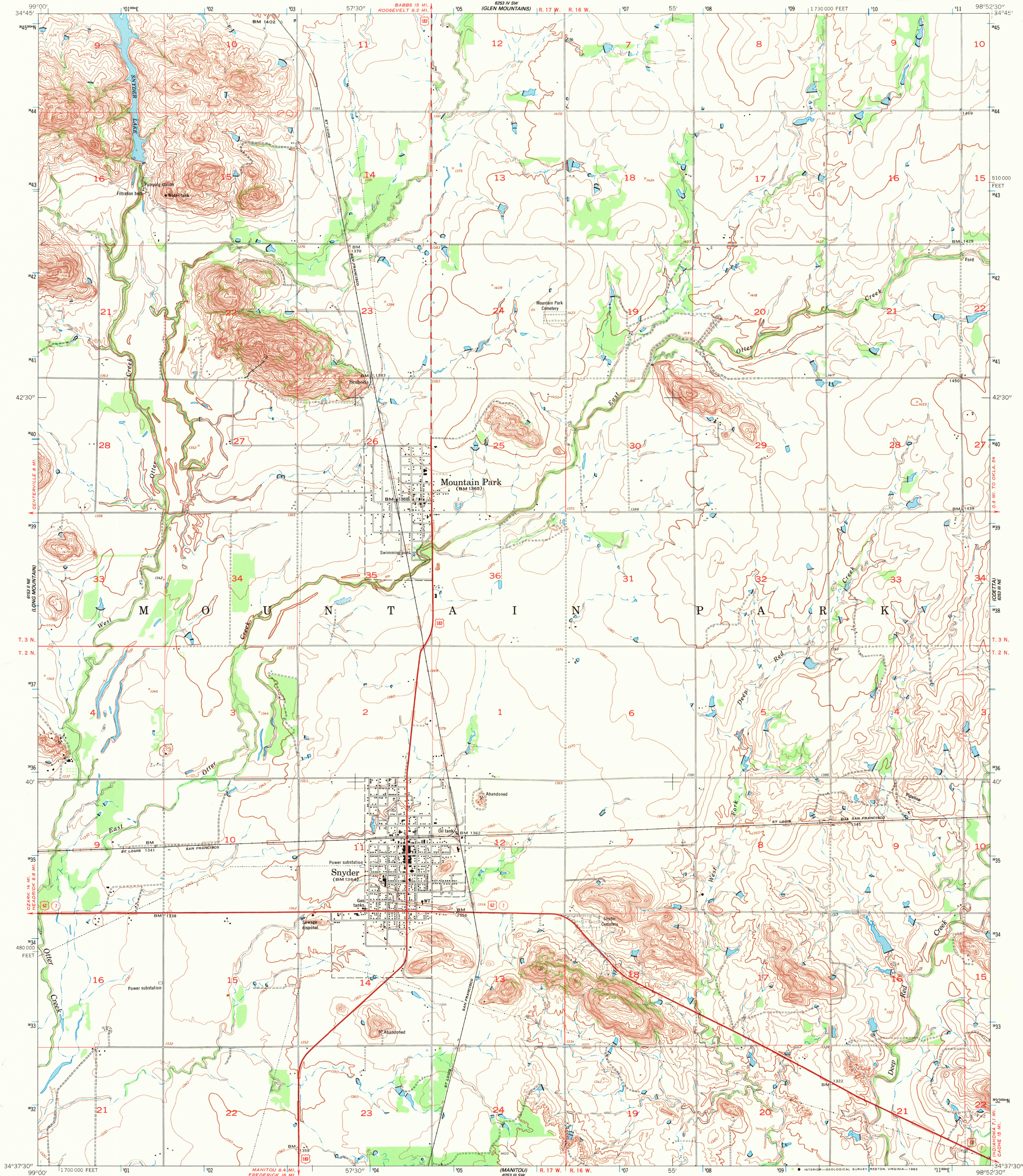
6153 1/2
ROOSEVELT 1/2

UNITED STATES
DEPARTMENT OF THE INTERIOR
GEOLOGICAL SURVEY

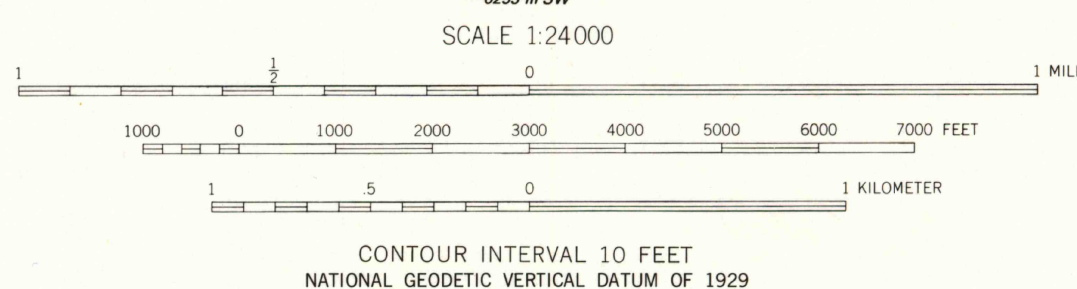
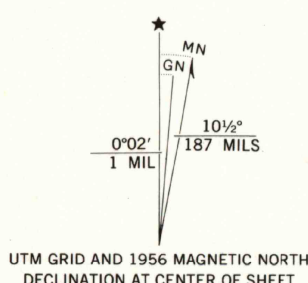
UNITED STATES
DEPARTMENT OF THE ARMY
CORPS OF ENGINEERS

SNYDER QUADRANGLE
OKLAHOMA-KIOWA CO.
7.5 MINUTE SERIES (TOPOGRAPHIC)
NW 1/4 SNYDER 15' QUADRANGLE

6153 1/2
COOPERTON



Mapped by the Army Map Service
Published for civil use by the Geological Survey
Control by USGS, USC&GS, USCE, and Oklahoma Geodetic Survey
Topography by photogrammetric methods from aerial photographs
taken 1947 and 1948. Field check 1950. Revised 1956
Polyconic projection. 1927 North American datum
10,000-foot grid based on Oklahoma coordinate system, south zone
1000-meter Universal Transverse Mercator grid ticks,
zone 14, shown in blue
To place on the predicted North American Datum 1983
move the projection lines 4 meters south and
32 meters east as shown by dashed corner ticks
Unchecked elevations are shown in brown



ROAD CLASSIFICATION
Heavy-duty ——— Light-duty ———
Medium-duty - - - - - Unimproved dirt - - - - -
U. S. Route ——— State Route ———

SNYDER, OKLA.
NW 1/4 SNYDER 15' QUADRANGLE
N3437.5-W9852.5/7.5

1956

DMA 6253 III NW-SERIES V883

THIS MAP COMPLIES WITH NATIONAL MAP ACCURACY STANDARDS
FOR SALE BY U. S. GEOLOGICAL SURVEY, DENVER, COLORADO 80225, OR RESTON, VIRGINIA 22092
AND OKLAHOMA GEOLOGICAL SURVEY, NORMAN, OKLAHOMA 73069
A FOLDER DESCRIBING TOPOGRAPHIC MAPS AND SYMBOLS IS AVAILABLE ON REQUEST

RETURN TO:
USGS AND HISTORICAL MAP ARCHIVES

14