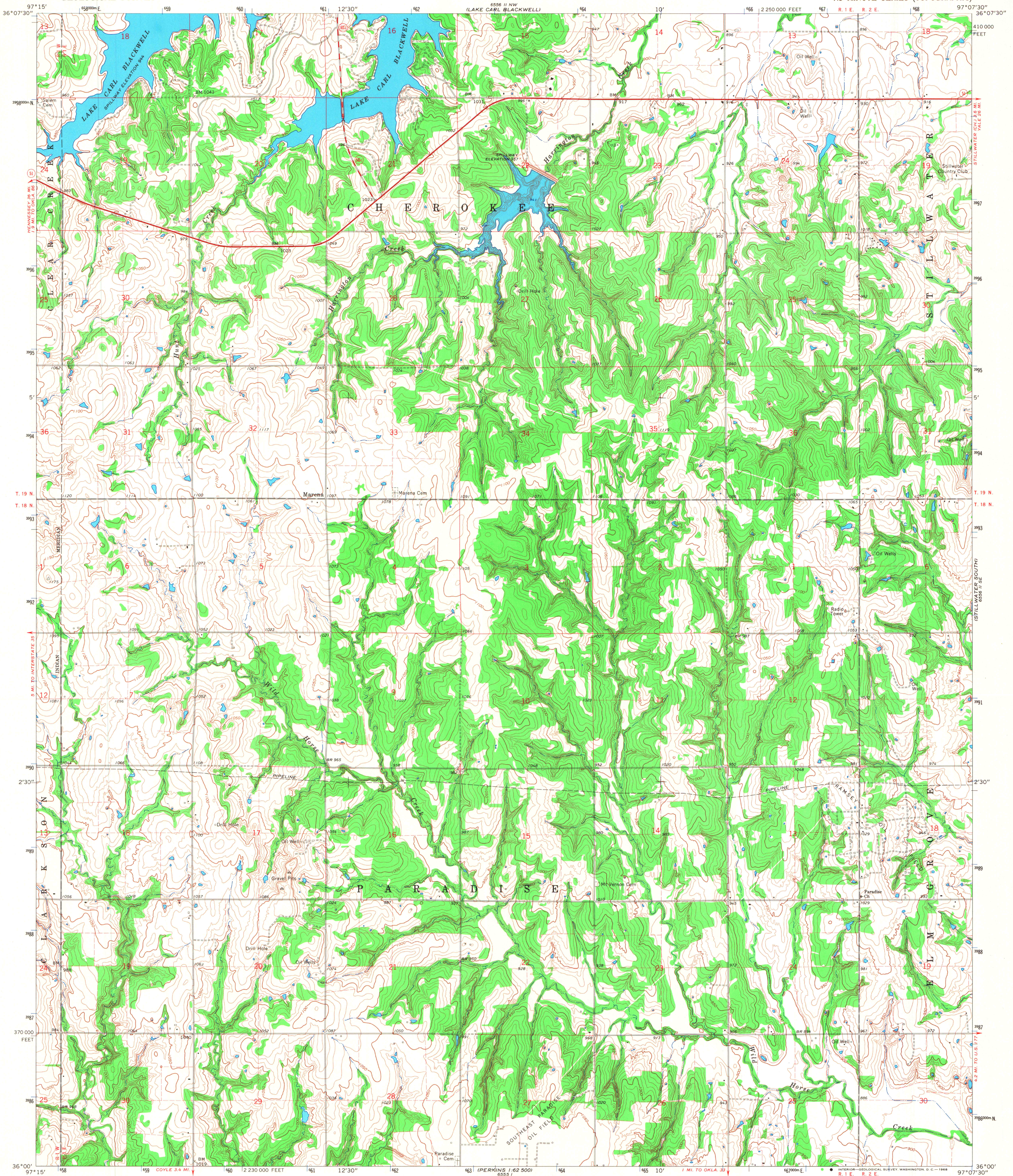
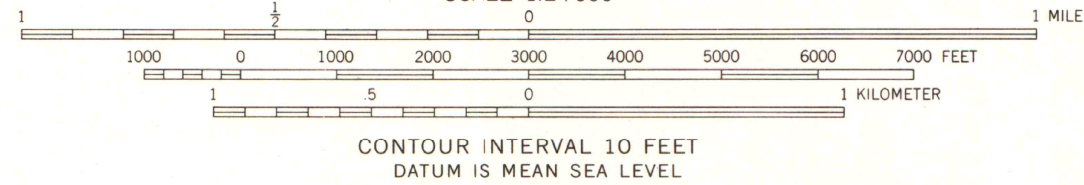
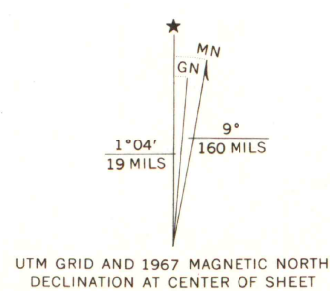


UNITED STATES
DEPARTMENT OF THE INTERIOR
GEOLOGICAL SURVEY

STILLWATER SW QUADRANGLE
OKLAHOMA—PAYNE CO.
7.5 MINUTE SERIES (TOPOGRAPHIC)



Mapped, edited, and published by the Geological Survey
Control by USGS, USC&GS, and Oklahoma Geological Survey
Topography by photogrammetric methods from aerial
photographs taken 1964. Field checked 1967
Polyconic projection. 1927 North American datum
10,000-foot grid based on Oklahoma coordinate system, north zone
1000-meter Universal Transverse Mercator grid ticks,
zone 14, shown in blue
Fine red dashed lines indicate selected fence and field lines where
generally visible on aerial photographs. This information is unchecked



MAP AND AIR PHOTO LIBRARY
University of Wisconsin



ROAD CLASSIFICATION
Heavy-duty ——— Light-duty ———
Medium-duty ——— Unimproved dirt ———
○ State Route

THIS MAP COMPLIES WITH NATIONAL MAP ACCURACY STANDARDS
FOR SALE BY U.S. GEOLOGICAL SURVEY, DENVER, COLORADO 80225, OR WASHINGTON, D.C. 20242
A FOLDER DESCRIBING TOPOGRAPHIC MAPS AND SYMBOLS IS AVAILABLE ON REQUEST

STILLWATER SW, OKLA.
N3600—W707.5/7.5

1967

AMS 6556 II SW—SERIES V883