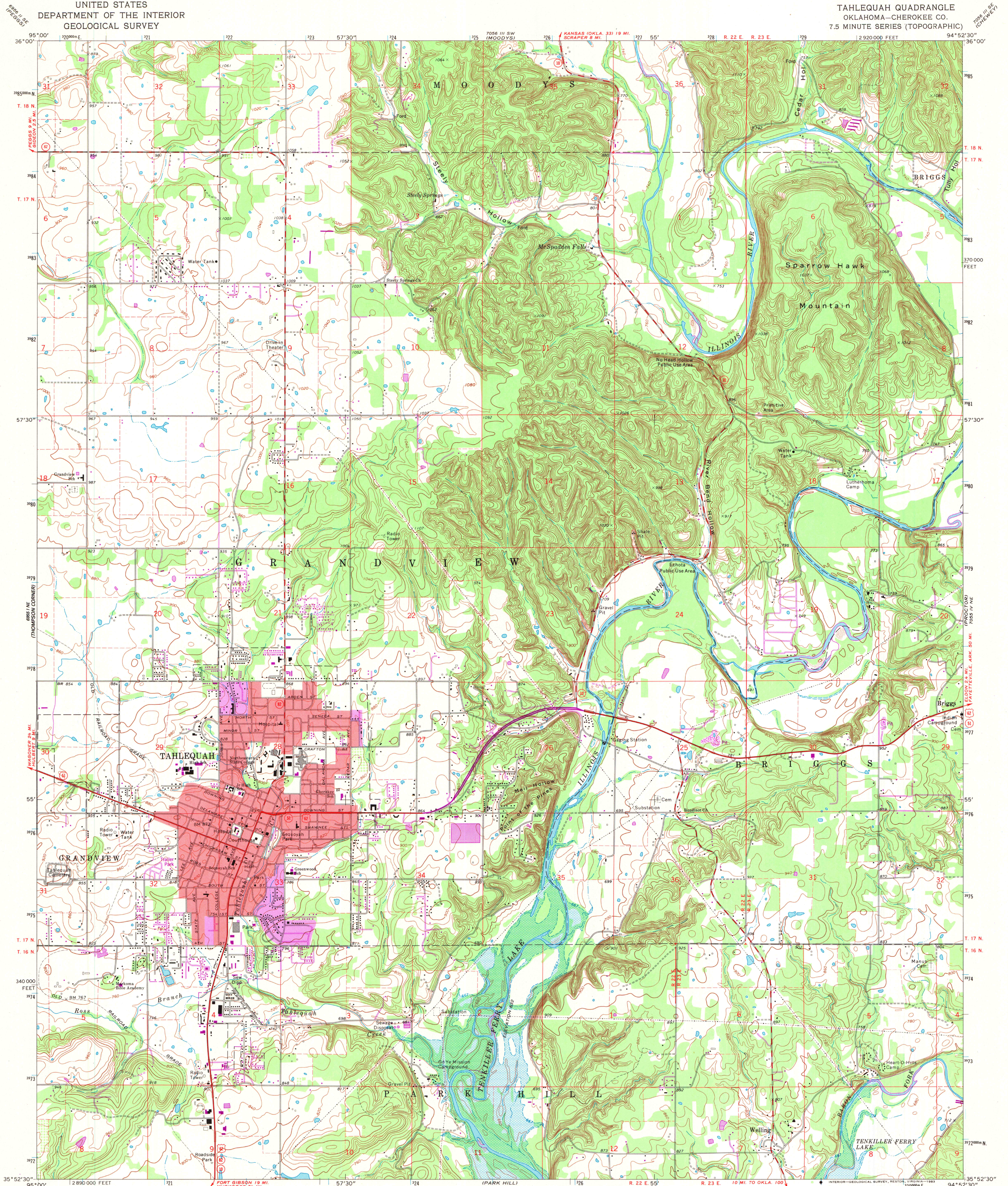


UNITED STATES  
DEPARTMENT OF THE INTERIOR  
GEOLOGICAL SURVEY

TAHLEQUAH QUADRANGLE  
OKLAHOMA—CHEROKEE CO.  
7.5 MINUTE SERIES (TOPOGRAPHIC)



Mapped, edited, and published by the Geological Survey  
Control by USGS and USC&GS  
Topography by photogrammetric methods from aerial  
photographs taken 1971. Field checked 1972  
Projection and 10,000-foot grid ticks: Oklahoma coordinate  
system, north zone (Lambert conformal conic)  
1000 meter Universal Transverse Mercator grid ticks,  
zone 15, shown in blue. 1927 North American datum  
Red tint indicates area in which only landmark buildings are shown  
Areas covered by dashed light-blue pattern  
are subject to controlled inundation  
To place on the predicted North American Datum 1983  
move the projection lines 5 meters south and  
20 meters east as shown by dashed corner ticks

UTM GRID AND 1982 MAGNETIC NORTH  
DECLINATION AT CENTER OF SHEET

SCALE 1:24,000  
CONTOUR INTERVAL 20 FEET  
NATIONAL GEODETIC VERTICAL DATUM OF 1929

THIS MAP COMPLIES WITH NATIONAL MAP ACCURACY STANDARDS  
FOR SALE BY U.S. GEOLOGICAL SURVEY, DENVER, COLORADO 80225, OR RESTON, VIRGINIA 22092  
AND BY THE OKLAHOMA GEOLOGICAL SURVEY, NORMAN, OKLAHOMA 73069  
A FOLDER DESCRIBING TOPOGRAPHIC MAPS AND SYMBOLS IS AVAILABLE ON REQUEST

ARTHUR H. ROBINSON MAP LIBRARY  
University of Wisconsin-Madison

Revisions shown in purple compiled from aerial  
photographs taken 1980 and other sources  
This information not field checked. Map edited 1982  
Purple tint indicates extension of urban area



ROAD CLASSIFICATION  
Primary highway, hard surface  
Secondary highway, hard surface  
Light-duty road, hard or improved surface  
Unimproved road  
Interstate Route  
U. S. Route  
State Route

A.H. ROBINSON  
DEC - 8 1983  
University of Wisconsin  
Madison

TAHLEQUAH, OKLA.  
N3552.5-W9452.5/7.5  
1972  
PHOTOREVISED 1982  
DMA 7055 IV NW—SERIES V883