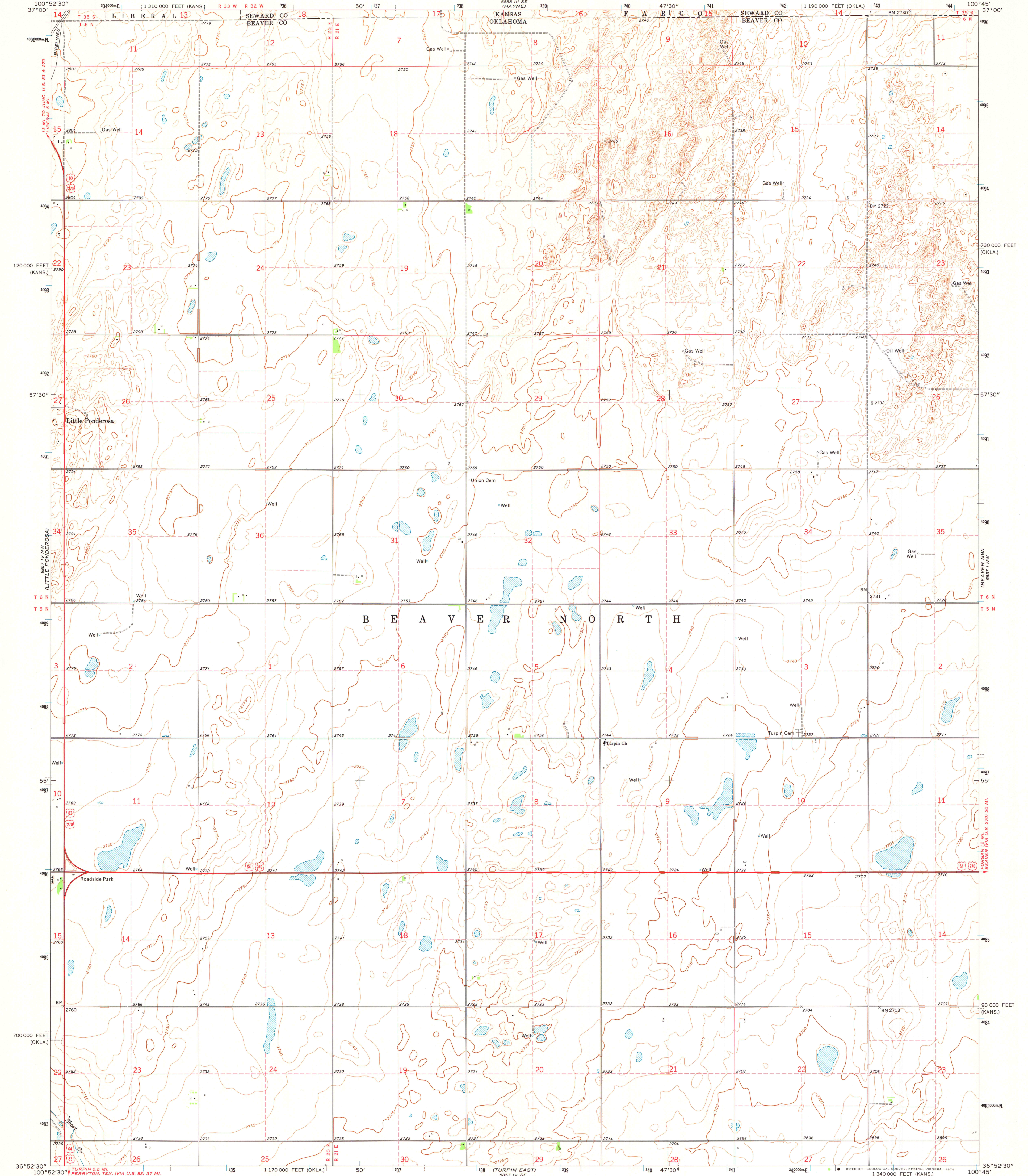


UNITED STATES
DEPARTMENT OF THE INTERIOR
GEOLOGICAL SURVEY

TURPIN NE QUADRANGLE
OKLAHOMA-KANSAS
7.5 MINUTE SERIES (TOPOGRAPHIC)



Mapped, edited, and published by the Geological Survey
Control by USGS and NOS/NOAA

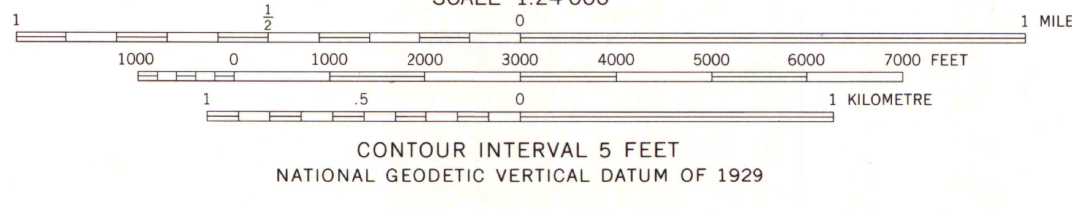
Topography by photogrammetric methods from aerial
photographs taken 1972. Field checked 1973

Projection: Oklahoma coordinate system, north zone
(Lambert conformal conic)

10,000-foot grid ticks based on Oklahoma coordinate
system, north zone and Kansas coordinate system, south zone

1000-metre Universal Transverse Mercator grid ticks,
zone 14, shown in blue. 1927 North American datum

Fine red dashed lines indicate selected fence and field lines where
generally visible on aerial photographs. This information is unchecked



THIS MAP COMPLIES WITH NATIONAL MAP ACCURACY STANDARDS
FOR SALE BY U. S. GEOLOGICAL SURVEY, DENVER, COLORADO 80225, OR RESTON, VIRGINIA 22092
OKLAHOMA GEOLOGICAL SURVEY, NORMAN, OKLAHOMA 73069,
AND STATE GEOLOGICAL SURVEY, LAWRENCE, KANSAS 66044
A FOLDER DESCRIBING TOPOGRAPHIC MAPS AND SYMBOLS IS AVAILABLE ON REQUEST

ROAD CLASSIFICATION
Primary highway, hard surface
Secondary highway, hard surface
Light-duty road, hard or improved surface
Unimproved road
Interstate Route
U. S. Route
State Route

MAP AND AIR PHOTO
LIBRARY

TURPIN NE, OKLA.-KANS.
N3652.5-W10045.7.5

1973
AMS 5857 IV NE-SERIES V883

University of Wisconsin
Madison