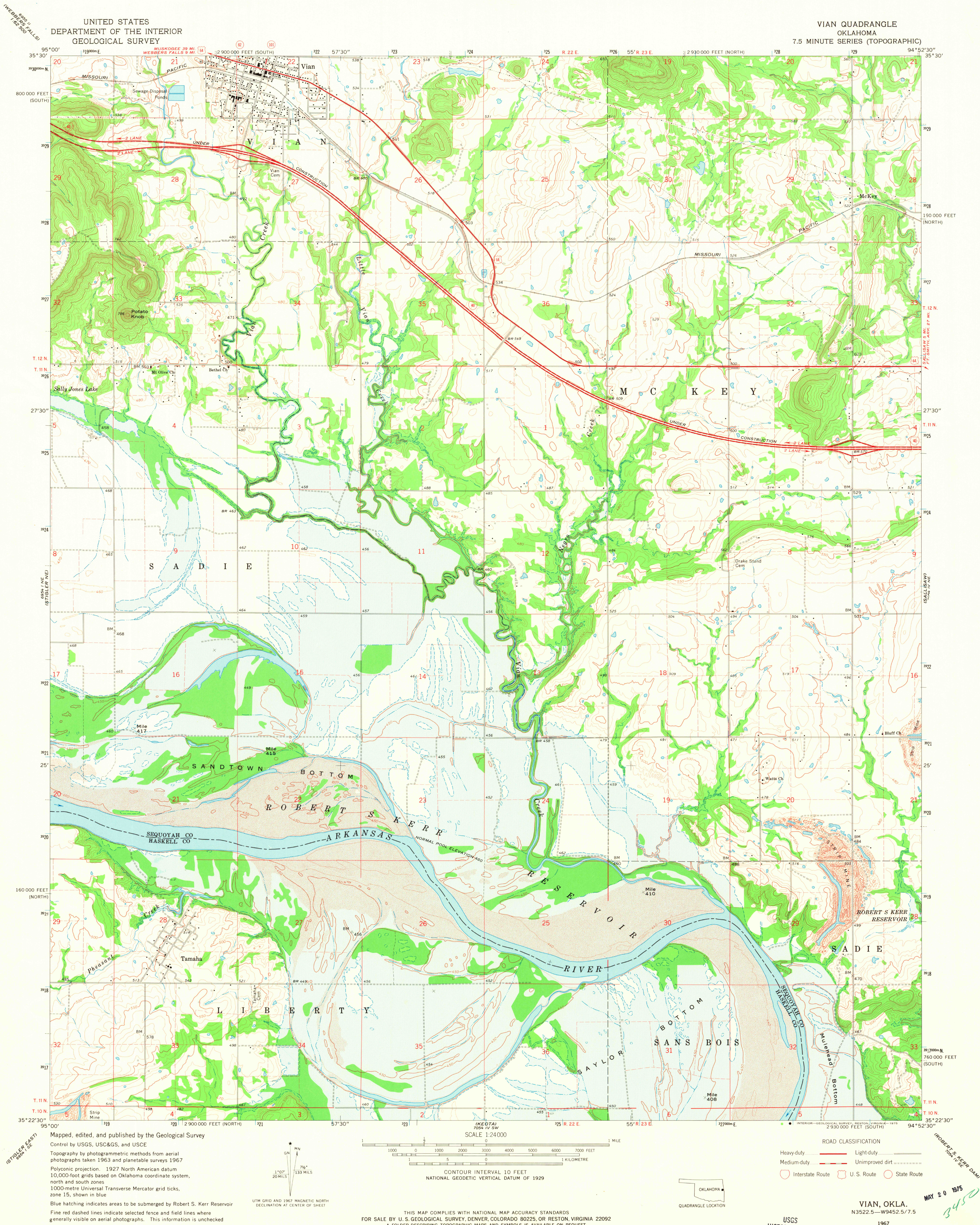


UNITED STATES  
DEPARTMENT OF THE INTERIOR  
GEOLOGICAL SURVEY

VIAN QUADRANGLE  
OKLAHOMA  
7.5 MINUTE SERIES (TOPOGRAPHIC)



Mapped, edited, and published by the Geological Survey

Control by USGS, USC&GS, and USCE

Topography by photogrammetric methods from aerial photographs taken 1963 and planetable surveys 1967

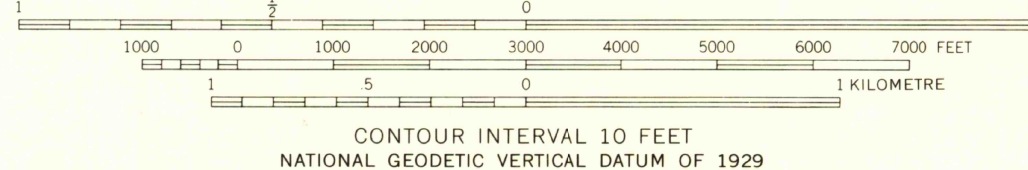
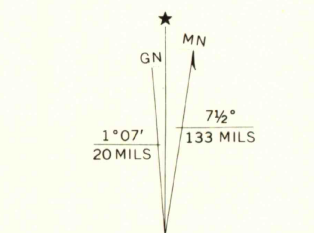
Polyconic projection. 1927 North American datum

10,000-foot grids based on Oklahoma coordinate system, north and south zones

1000-metre Universal Transverse Mercator grid ticks, zone 15, shown in blue

Blue hatching indicates areas to be submerged by Robert S. Kerr Reservoir

Fine red dashed lines indicate selected fence and field lines where generally visible on aerial photographs. This information is unchecked



THIS MAP COMPLIES WITH NATIONAL MAP ACCURACY STANDARDS  
FOR SALE BY U. S. GEOLOGICAL SURVEY, DENVER, COLORADO 80225, OR RESTON, VIRGINIA 22092  
A FOLDER DESCRIBING TOPOGRAPHIC MAPS AND SYMBOLS IS AVAILABLE ON REQUEST



ROAD CLASSIFICATION  
Heavy-duty ——— Light-duty ———  
Medium-duty ——— Unimproved dirt ———  
Interstate Route U. S. Route State Route

USGS  
HISTORICAL FILE  
TOPOGRAPHIC DIVISION

VIAN, OKLA.  
N3522.5—W9452.5/7.5

1967

AMS 7054 IV NW—SERIES V883

MAY 20 1975  
3450