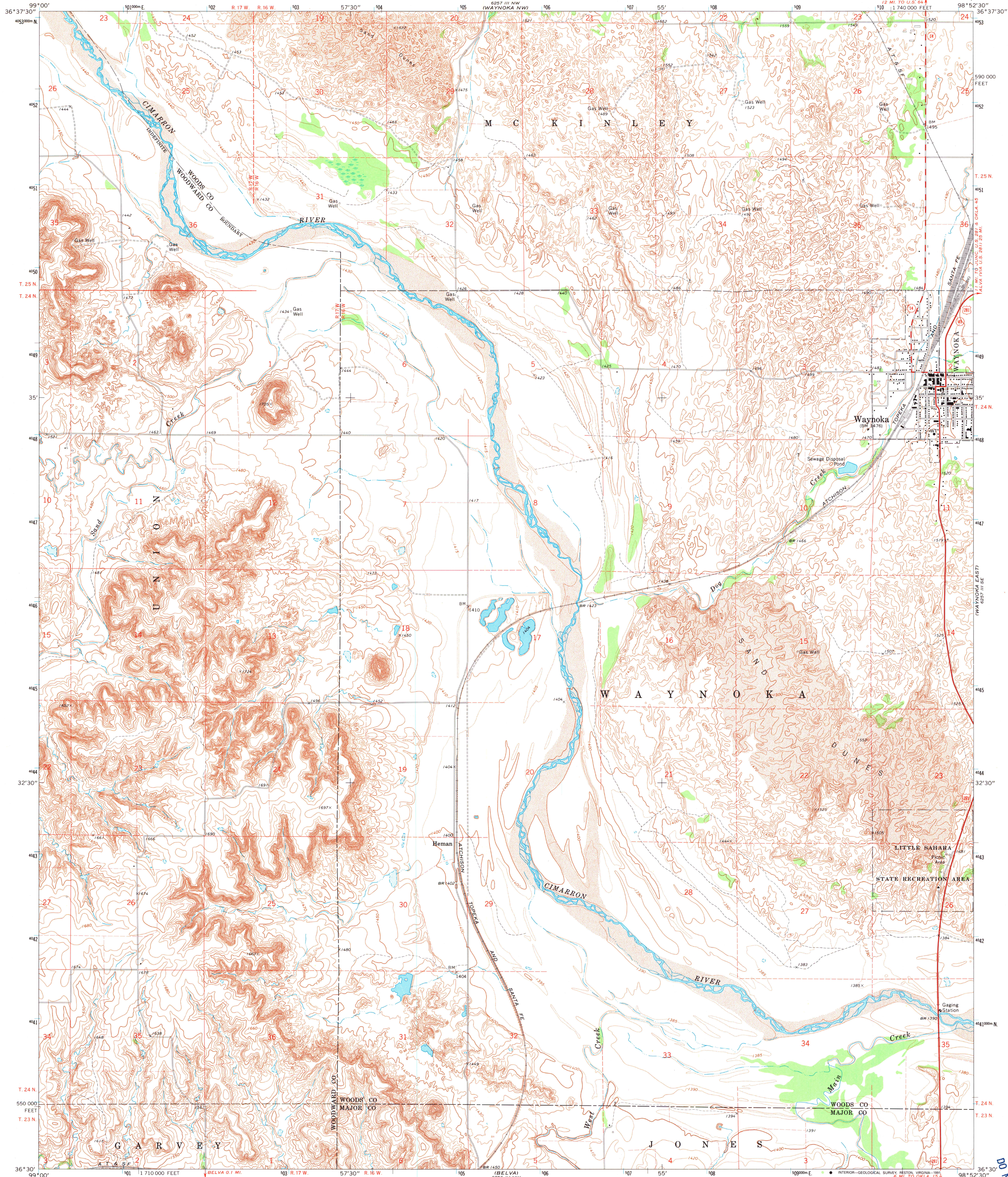


UNITED STATES
DEPARTMENT OF THE INTERIOR
GEOLOGICAL SURVEY

WAYNOKA WEST QUADRANGLE
OKLAHOMA
7.5 MINUTE SERIES (TOPOGRAPHIC)



Maped, edited, and published by the Geological Survey

Control by USGS and USC&GS

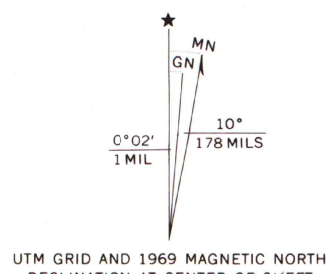
Topography by photogrammetric methods from aerial photographs taken 1967. Field checked 1969

Polyconic projection. 1927 North American datum. 10,000-foot grid based on Oklahoma coordinate system, north zone. 1000-meter Universal Transverse Mercator grid ticks, zone 14, shown in blue.

Fine red dashed lines indicate selected fence and field lines where generally visible on aerial photographs. This information is unchecked.

Map photoinspected 1981

No major culture or drainage changes observed



SCALE 1:24,000

CONTOUR INTERVAL 10 FEET
DOTTED LINES REPRESENT 5-FOOT CONTOURS
DATUM IS MEAN SEA LEVEL

THIS MAP COMPLIES WITH NATIONAL MAP ACCURACY STANDARDS
FOR SALE BY U.S. GEOLOGICAL SURVEY, DENVER, COLORADO, 80225, OR RESTON, VIRGINIA 22092
AND BY THE OKLAHOMA GEOLOGICAL SURVEY, NORMAN, OKLAHOMA 73069
A FOLDER DESCRIBING TOPOGRAPHIC MAPS AND SYMBOLS IS AVAILABLE ON REQUEST



ROAD CLASSIFICATION
Primary highway, all weather, hard surface
Secondary highway, all weather, hard surface
Light-duty road, all weather, improved surface
Unimproved road, fair or dry weather
U. S. Route
State Route

WAYNOKA WEST, OKLA.
N 3630 - W 9852.5 / 7.5

1969
PHOTOINSPECTED 1981
AMS 6257 III SW-SERIES V883

U.S. Geological Survey
DO NOT DISCARD
OCT 10 1991
University of Wisconsin
Madison
A.H. ROBINSON
MAP LIBRARY