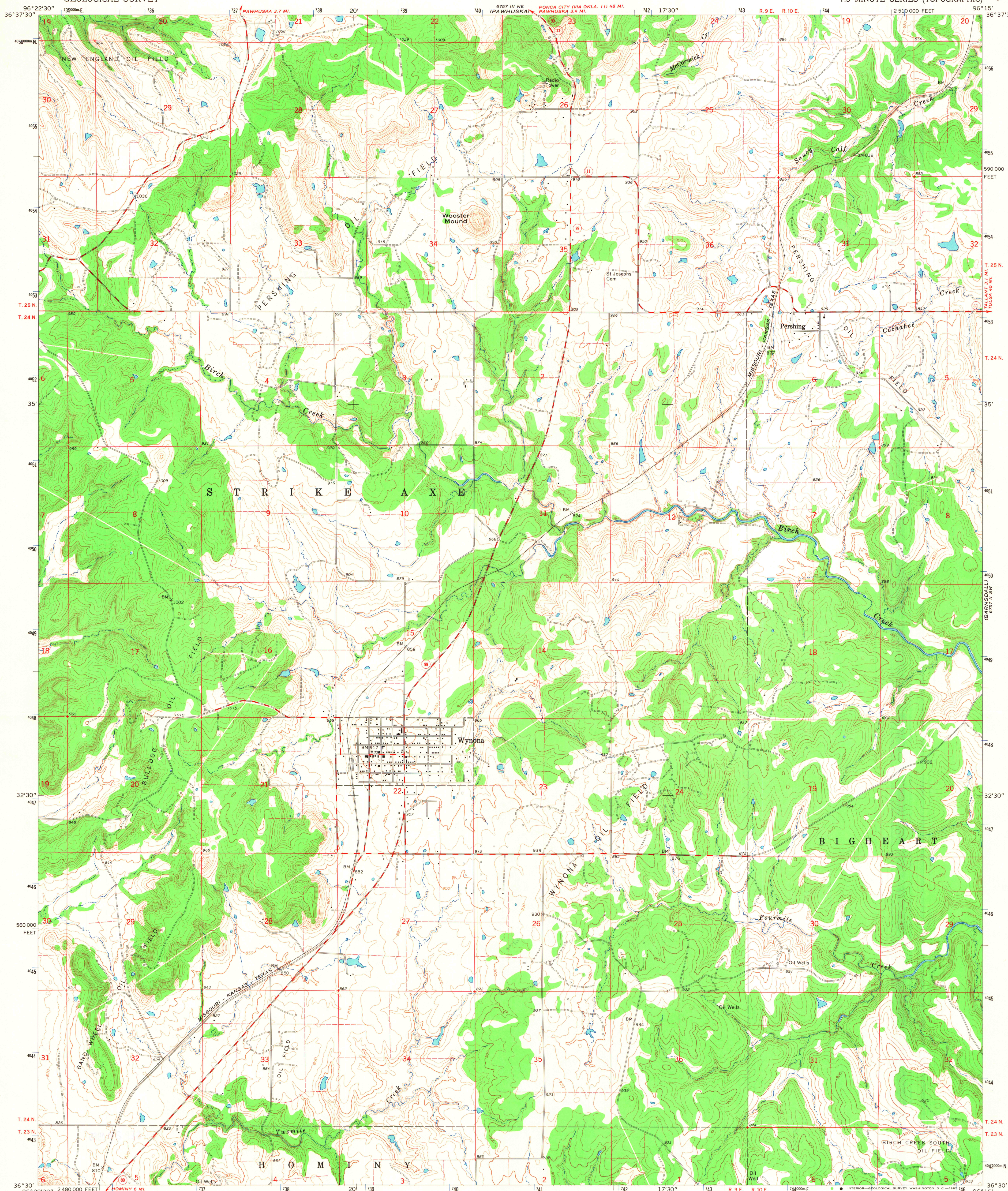


6757 III NW  
(INCL. 600-1)



Mapped, edited, and published by the Geological Survey

Control by USGS and USC&GS

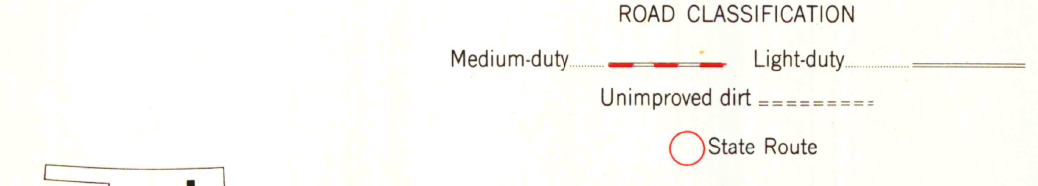
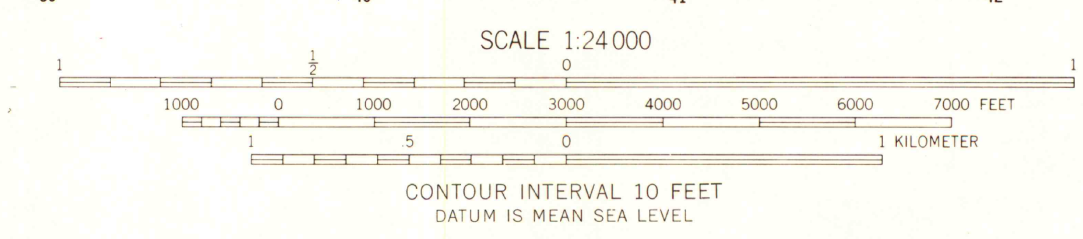
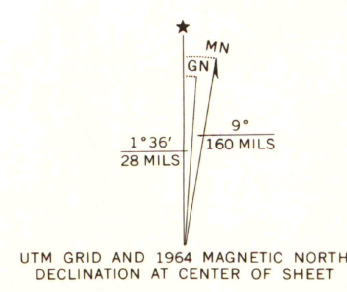
Topography by photogrammetric methods from aerial photographs taken 1963. Field checked 1964

Polyconic projection. 1927 North American datum

10,000-foot grid based on Oklahoma coordinate system, north zone

1000-meter Universal Transverse Mercator grid ticks, zone 14, shown in blue

Fine red dashed lines indicate selected fence and field lines where generally visible on aerial photographs. This information is unchecked



MAP AND AIR PHOTO LIBRARY  
University of Wisconsin

WYNONA, OKLA.  
N3630—W9615/7.5

1964

AMS 6757 III SE—SERIES V883

THIS MAP COMPLIES WITH NATIONAL MAP ACCURACY STANDARDS  
FOR SALE BY U.S. GEOLOGICAL SURVEY, DENVER, COLORADO 80225, OR WASHINGTON, D.C. 20242  
A FOLDER DESCRIBING TOPOGRAPHIC MAPS AND SYMBOLS IS AVAILABLE ON REQUEST