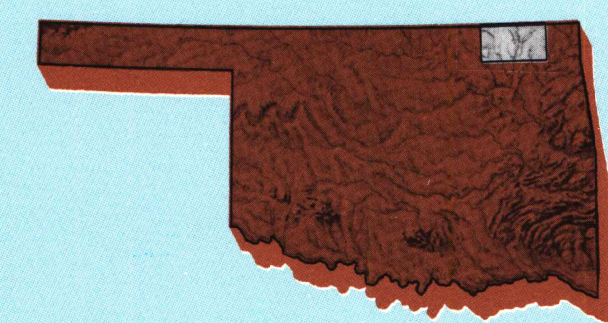


Bartlesville

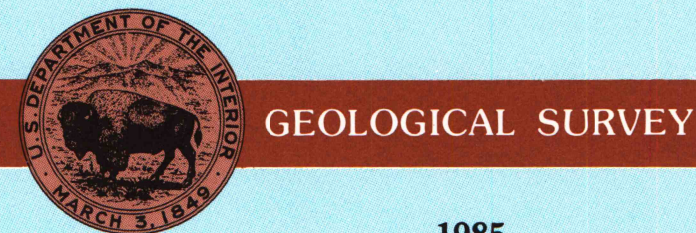
OKLAHOMA-KANSAS

1:100 000-scale
planimetric map



30 X 60 MINUTE QUADRANGLE
SHOWING

- Elevations in meters
- Highways, roads and other manmade structures
- Water features
- Woodland areas
- Geographic names



Produced by the United States Geological Survey

Compiled from USGS 1:24 000-scale topographic maps dated 1970-1982. Planimetry revised from aerial photographs taken 1981 and other source data. Revised information not field checked. Map edited 1985.

Projection and 10 000-meter grid, zone 15 Universal Transverse Mercator. 25 000-foot grid ticks based on Oklahoma coordinate system, north zone. 1927 North American Datum. To place on the predicted North American Datum 1983 move the projection lines 3 meters south and 22 meters east. There may be private inholdings within the boundaries of the National or State reservations shown on this map.

NATIONAL GEODETIC VERTICAL DATUM of 1929
ELEVATIONS SHOWN TO THE NEAREST METER

THIS MAP COMPLIES WITH NATIONAL MAP ACCURACY STANDARDS

| CONVERSION TABLE | | DECLINATION DIAGRAM | | ADJOINING MAPS | | |
|------------------|---------|---------------------|--|----------------|---|---|
| Meters | Feet | | | 1 | 2 | 3 |
| 2 | 6.5617 | | | 4 | 5 | |
| 3 | 9.8425 | | | 6 | 7 | 8 |
| 4 | 13.1234 | | | | | |
| 5 | 16.4042 | | | | | |
| 6 | 19.6850 | | | | | |
| 7 | 22.9659 | | | | | |
| 8 | 26.2467 | | | | | |
| 9 | 29.5275 | | | | | |
| 10 | 32.8084 | | | | | |

To convert meters to feet multiply by 3.2808
To convert feet to meters multiply by 0.3048

UTM grid convergence (UTM and 1983 magnetic) at center of map
Diagram is approximate

1 Sedan
2 Coffeyville
3 Joplin
4 Muskogee
5 Neosho
6 Bartlesville
7 Tulsa
8 Fayetteville

FOR SALE BY U. S. GEOLOGICAL SURVEY, DENVER, COLORADO 80225
OR RESTON, VIRGINIA 22092

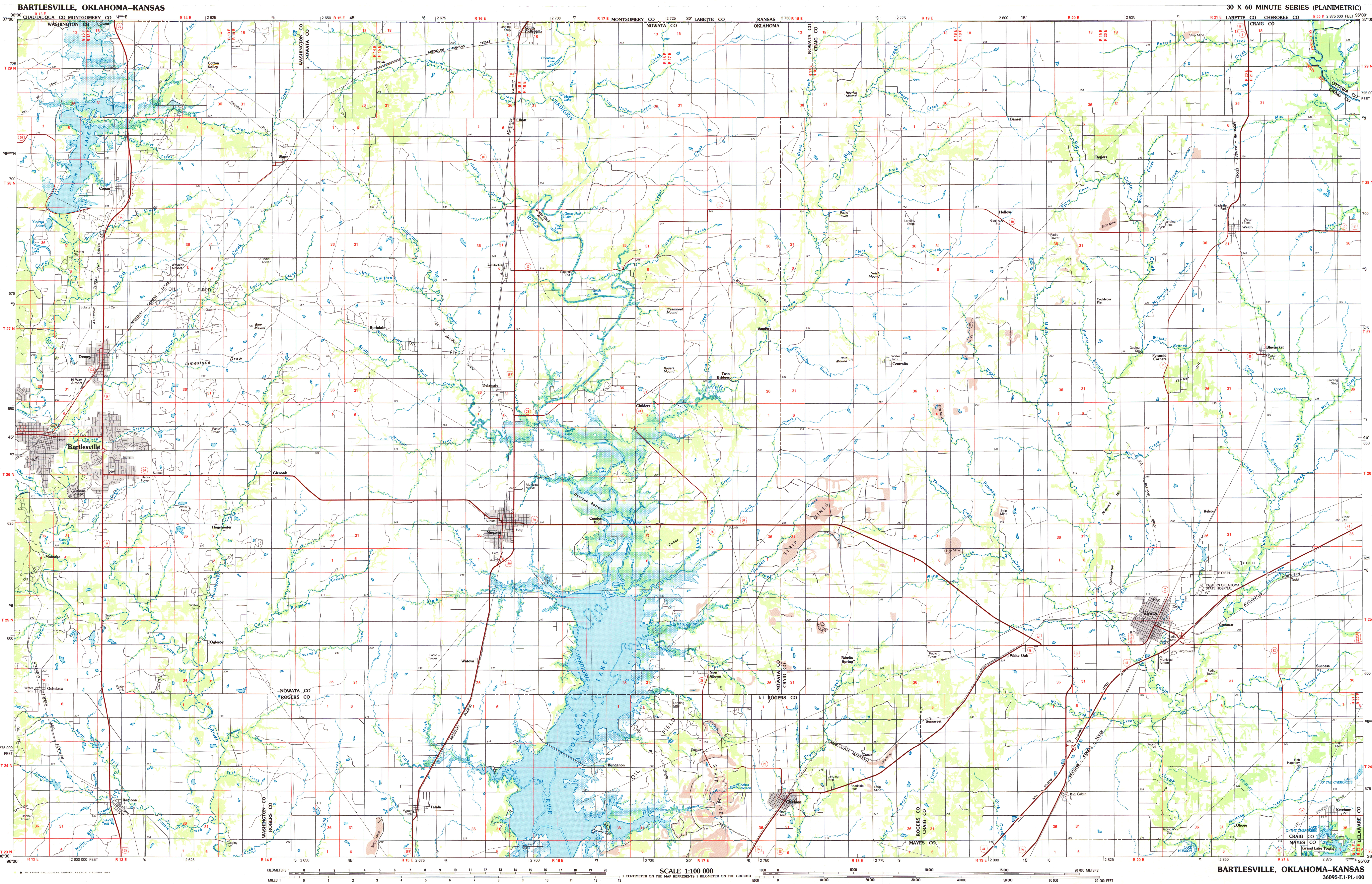
Topographic Map Symbols

| | |
|---|--|
| Primary highway, hard surface | |
| Secondary highway, hard surface | |
| Light duty road, principal street, hard or improved surface | |
| Other road or street; trail | |
| Route marker: Interstate, U. S., State | |
| Railroad: standard gage; narrow gage | |
| Bridge; overpass; underpass | |
| Turnout; road; railroad | |
| Built-up area; locality; elevation | |
| Airport; landing field; landing strip | |
| National boundary | |
| State boundary | |
| County boundary | |
| National or State reservation boundary | |
| Land grant boundary | |
| U. S. public lands survey: range, township, section | |
| Range, township, section line; protected | |
| Power transmission line; pipeline | |
| Dam; dam with lock | |
| Cemetery; building | |
| Windmill; water well; spring | |
| Mine shaft; set or ore mine, quarry; gravel pit | |
| Campground; picnic area; U. S. location monument | |
| Ruins; cliff dwelling | |
| Distorted surface: strip mine, levee, sand | |
| Contour: index; intermediate; supplementary | |
| Bathymetric contour: index; intermediate | |
| Stream, lake; perennial; intermittent | |
| Rapids, large and small; falls, large and small | |
| Area to be submerged; marsh; swamp | |
| Land subject to controlled inundation; woodland | |
| Scrub; mangrove | |
| Orchard; vineyard | |

U. S. Regional
Depositary Copy
DO NOT DISCARD

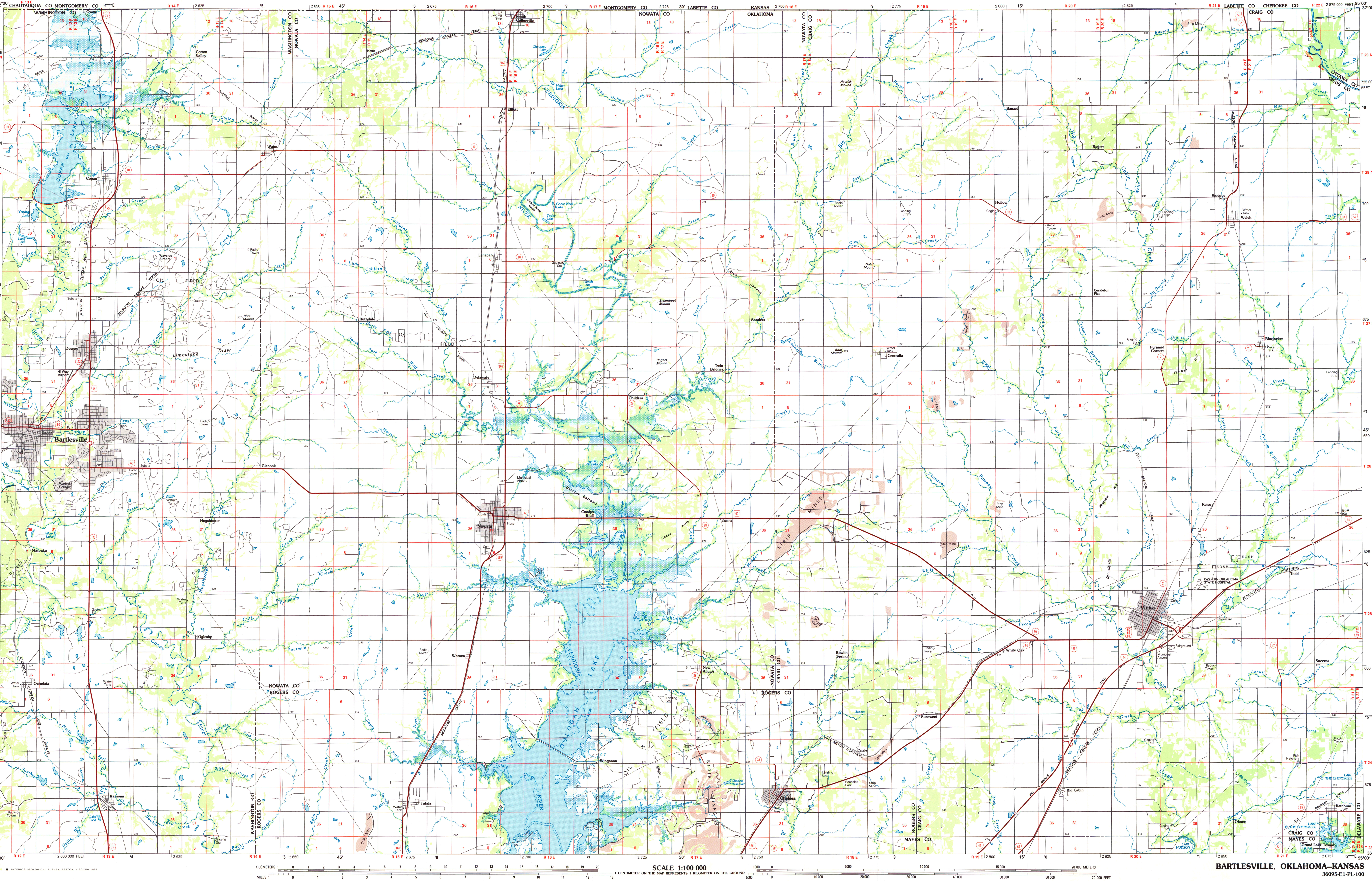
A pamphlet describing topographic maps is available on request
JUN 9 - 1985

ARTHUR H. ROBINSON MAP LIBRARY
University of Wisconsin-Madison



BARTLESVILLE, OKLAHOMA-KANSAS

30 X 60 MINUTE SERIES (PLANIMETRIC)



INTERIOR GEOLOGICAL SURVEY, RESTON, VIRGINIA 1985

KILOMETERS

0 1 2 3 4 5 6 7 8 9 10 11 12 13 14 15 16 17 18 19 20

MILES

0 1 2 3 4 5 6 7 8 9 10 11 12 13 14 15 16 17 18 19 20

SCALE 1:100 000

1 CENTIMETER ON THE MAP REPRESENTS 1 KILOMETER ON THE GROUND

BARTLESVILLE, OKLAHOMA-KANSAS

36095-E1-PL-100

1985