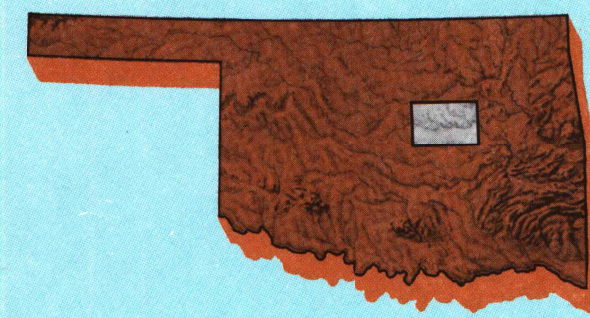


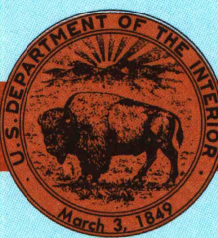
Bristow
OKLAHOMA

1:100 000-scale metric
topographic map



30 X 60 MINUTE QUADRANGLE
SHOWING

- Contours and elevations in meters
- Highways, roads and other manmade structures
- Water features
- Woodland areas
- Geographic names



GEOLOGICAL SURVEY

Produced by the United States Geological Survey

Compiled from USGS 1:24 000-scale topographic maps dated 1958-1975. Planimetry revised from aerial photographs taken 1980 and other source data. Revised information not field checked. Map edited 1990

Projection and 10 000-meter grid, zone 14, Universal Transverse Mercator
25 000-foot grid ticks based on Oklahoma coordinate system, north zone 1927 North American Datum
To place on the predicted North American Datum 1983, move the projection lines 4 meters south and 25 meters east
There may be private inholdings within the boundaries of the National or State reservations shown on this map

CONTOUR INTERVAL 10 METERS
NATIONAL GEODETIC VERTICAL DATUM OF 1929
ELEVATIONS SHOWN TO THE NEAREST METER

THIS MAP COMPLIES WITH NATIONAL MAP ACCURACY STANDARDS

CONVERSION TABLE		DECLINATION DIAGRAM	ADJOINING MAPS			
Meters	Feet		1	2	3	
1	3.2808		1	2	3	
2	6.5617		4	5		
3	9.8425					
4	13.1234					
5	16.4042					
6	19.6850					
7	22.9658					
8	26.2467					
9	29.5275					
10	32.8084					
To convert meters to feet multiply by 3.2808		UTM grid convergence (UTM and 1983, magnetic declination (M)) at center of map. Diagram is approximate				
To convert feet to meters multiply by 0.3048						

FOR SALE BY U.S. GEOLOGICAL SURVEY
DENVER, COLORADO 80225, OR RESTON, VIRGINIA 22092

ARTHUR H. ROBINSON MAP LIBRARY
University of Wisconsin-Madison
P-4-91

U.S. Regional
Depository Copy
DO NOT DISCARD

Topographic Map Symbols

Primary highway, hard surface.....	
Secondary highway, hard surface.....	
Light duty road, principal street, hard or improved surface.....	
Other road or street; trail.....	
Road marker: interstate, U.S. State.....	
Railroad: standard gauge, narrow gauge.....	
Bridge: overpass, underpass.....	
Tunnel: road; railroad.....	
Built up area; locality: elevation.....	
Airport: landing field; landing strip.....	
National boundary.....	
State boundary.....	
County boundary.....	
National or State reservation boundary.....	
Land grant boundary.....	
U.S. public lands survey: range, township, section.....	
Range, township, section line: protracted.....	
Power transmission line; pipeline.....	
Dam; dam with lock.....	
Cemetery; building.....	
Windmill; water well; spring.....	
Mine shaft; salt or cave; mine, quarry; gravel pit.....	
Campground; picnic area; U.S. location monument.....	
Runs; cliff dwelling.....	
Distorted surface: strip mine, lava, sand.....	
Contours: index, intermediate, supplementary.....	
Hydrographic contours: index, intermediate.....	
Stream, lake: perennial, intermittent.....	
Rapids, large and small; falls, large and small.....	
Area to be submerged; marsh, swamp.....	
Land subject to controlled inundation; woodland.....	
Scrub; mangrove.....	
Orchard; vineyard.....	

A pamphlet describing topographic maps is available on request

B006-98

SET

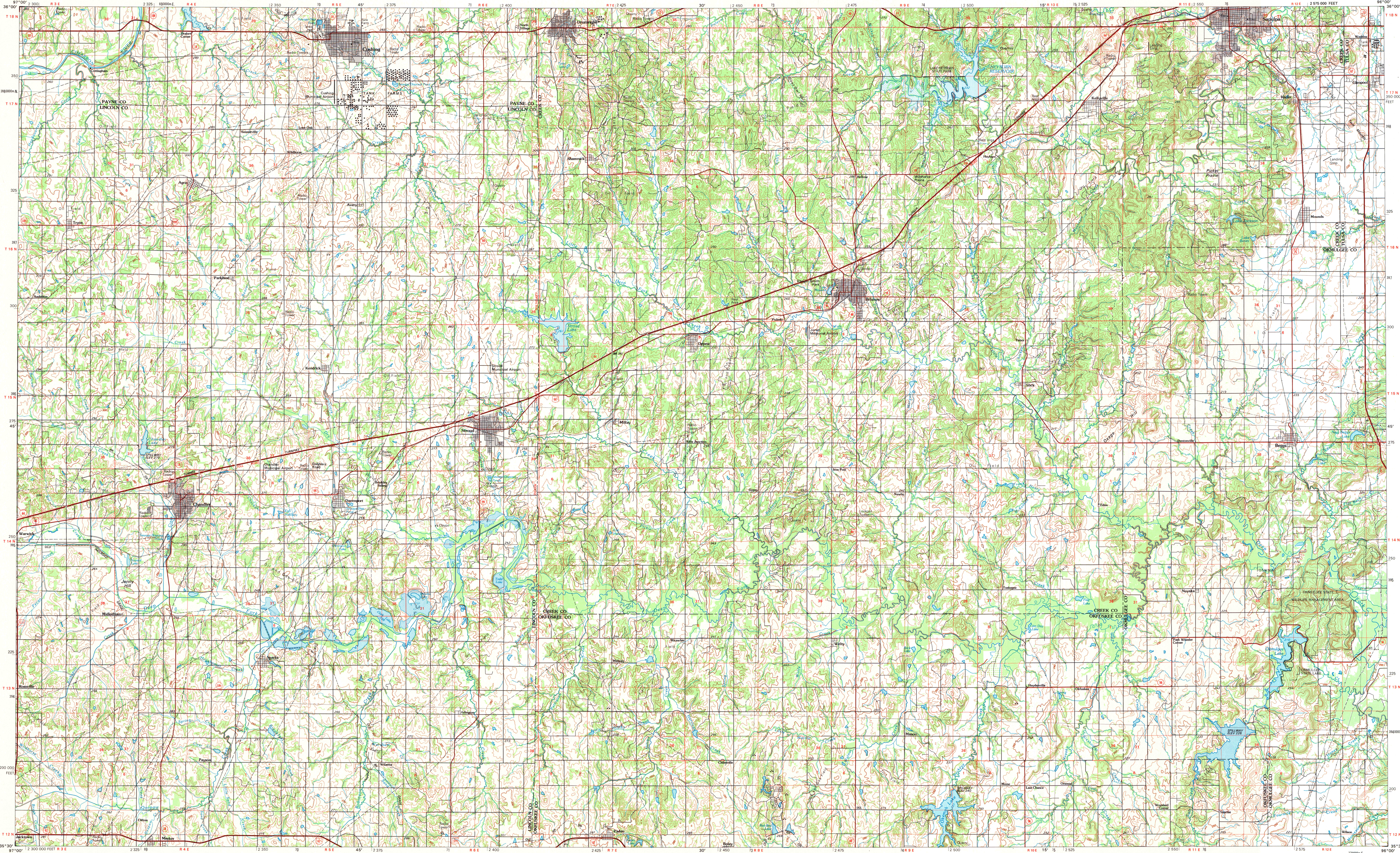
BRISTOW, OKLAHOMA

35096-E1-TM-100

1990

BRISTOW, OKLAHOMA

30 X 60 MINUTE SERIES (TOPOGRAPHIC)



• INTERIOR—GEOLOGICAL SURVEY, RESTON, VIRGINIA—1985

KILOMETERS 0 1 2 3 4 5 6 7 8 9 10 11 12 13 14 15 16 17 18 19 20
MILES 0 1 2 3 4 5 6 7 8 9 10 11 12 13 14 15 16 17 18 19 20

SCALE 1:100 000
1 CENTIMETER ON THE MAP REPRESENTS 1 KILOMETER ON THE GROUND
CONTOUR INTERVAL 10 METERS