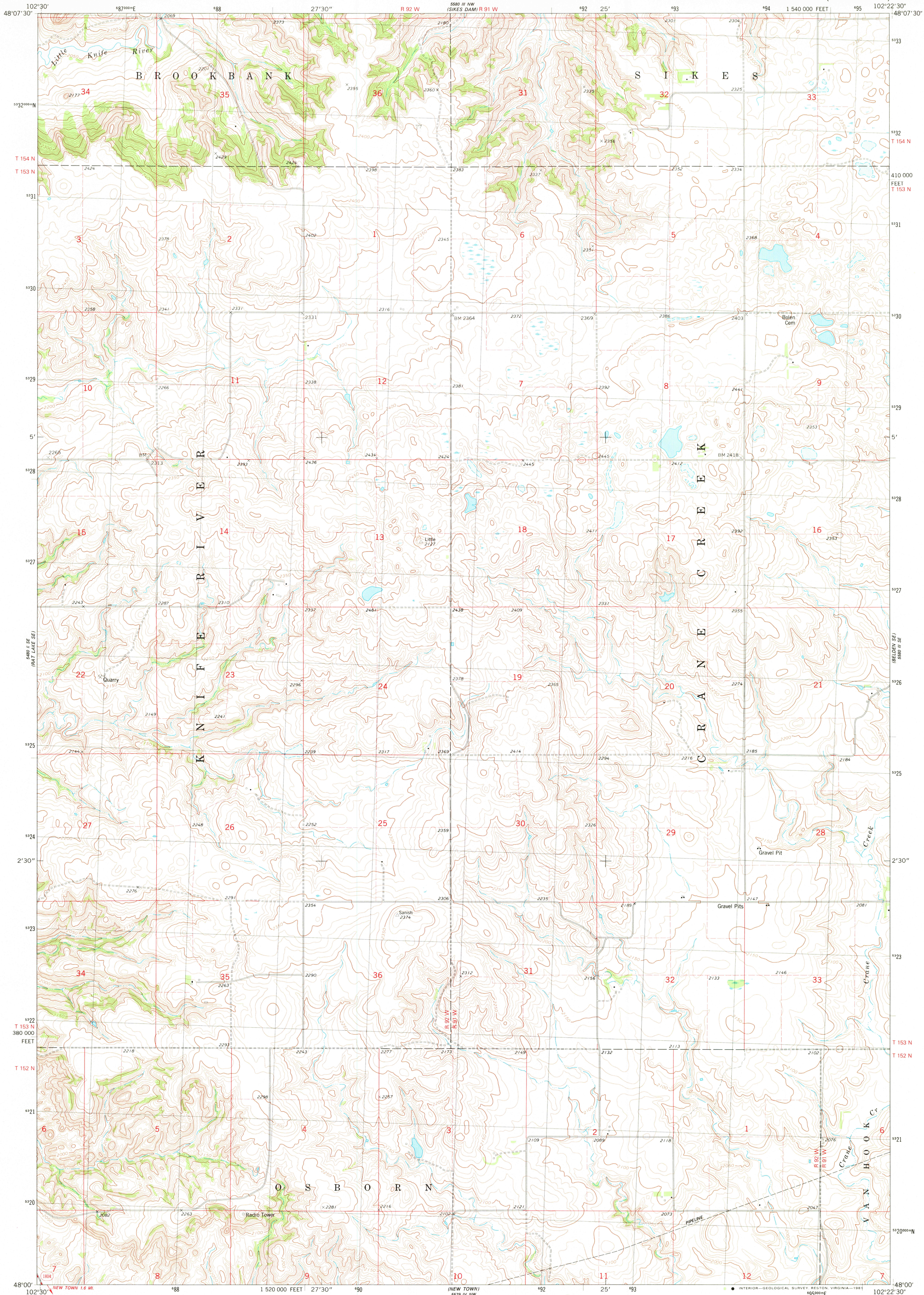


UNITED STATES
DEPARTMENT OF THE INTERIOR
GEOLOGICAL SURVEY

BELDEN SW QUADRANGLE
NORTH DAKOTA—MOUNTAIN CO.
7.5 MINUTE SERIES (TOPOGRAPHIC)



Maped, edited, and published by the Geological Survey
Control by USGS and NOS/NOAA
Topography by photogrammetric methods from aerial photographs
taken 1973. Field checked 1975. Map edited 1981
Projection and 10,000-foot grid ticks: North Dakota coordinate
system, north zone (Lambert conformal conic)
1000-meter Universal Transverse Mercator grid, zone 13
1927 North American Datum
To place on the predicted North American Datum 1983
move the projection lines 3 meters north and
35 meters east as shown by dashed corner ticks
Fine red dashed lines indicate selected fence and field lines
where generally visible on aerial photographs
This information is unchecked

SCALE 1:24 000
CONTOUR INTERVAL 10 FEET
NATIONAL GEODETIC VERTICAL DATUM OF 1929
THIS MAP COMPLIES WITH NATIONAL MAP ACCURACY STANDARDS
FOR SALE BY U. S. GEOLOGICAL SURVEY, DENVER, COLORADO 80225, OR RESTON, VIRGINIA 22092
AND BY THE STATE WATER COMMISSION, BISMARCK, NORTH DAKOTA 58501
A FOLDER DESCRIBING TOPOGRAPHIC MAPS AND SYMBOLS IS AVAILABLE ON REQUEST

ROAD CLASSIFICATION
Primary highway, hard surface
Secondary highway, hard surface
Unimproved road
Interstate Route
U. S. Route
State Route



USGS
HISTORICAL FILE
NATIONAL MAPPING DIVISION

BELDEN SW, N. DAK.
N4800-W10222.5/7.5
1981

DMA 5580 III SW—SERIES V871

AUG 3 1981
2000