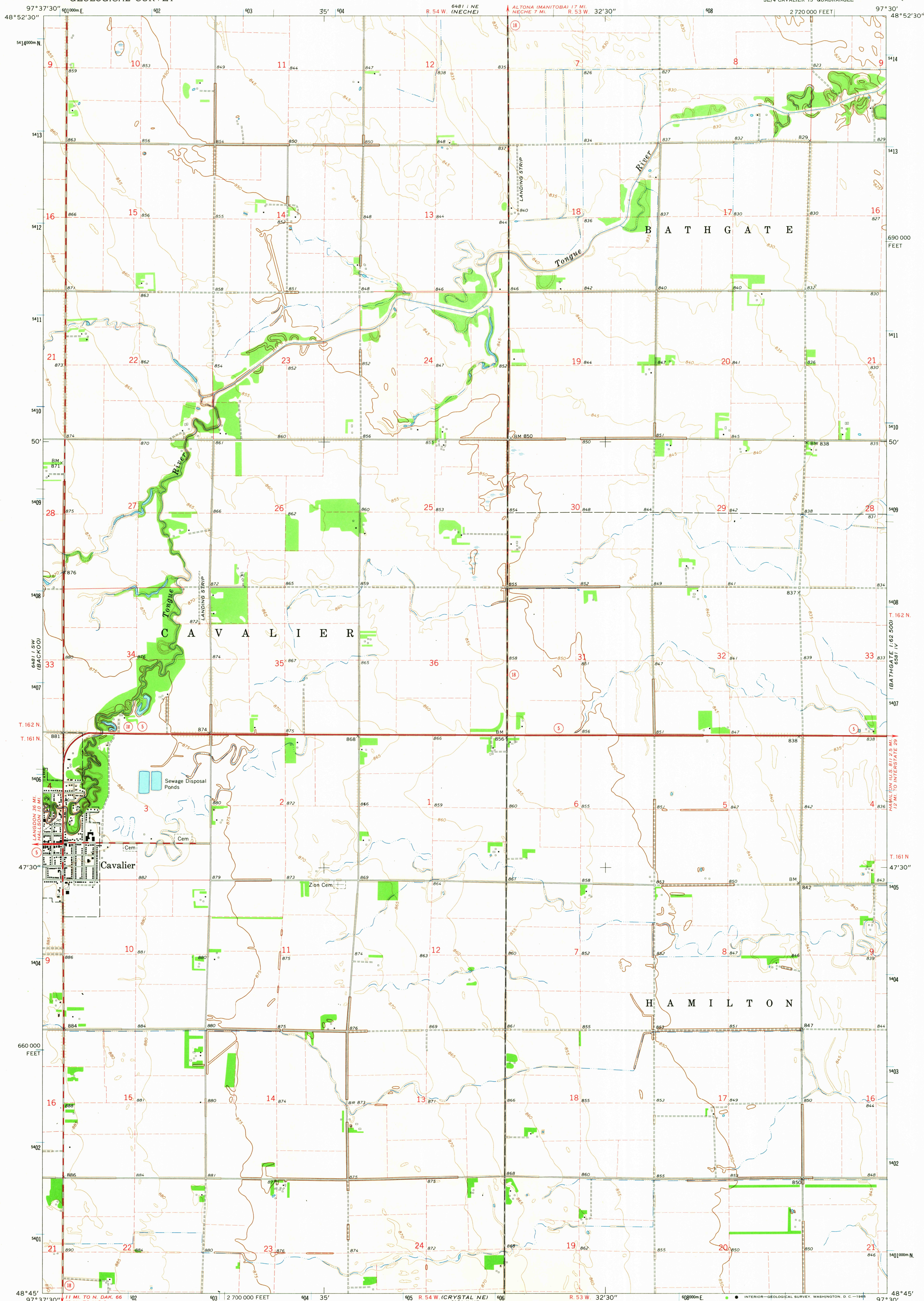


6481 NW
CAVALIER 1:62,500

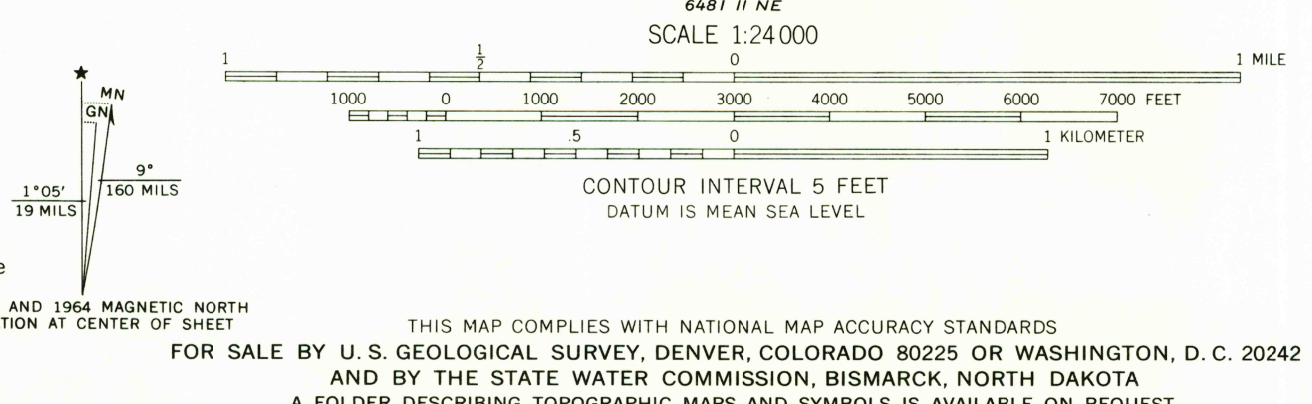
UNITED STATES
DEPARTMENT OF THE INTERIOR
GEOLOGICAL SURVEY

CAVALIER QUADRANGLE
NORTH DAKOTA—PEMBINA CO.
7.5 MINUTE SERIES (TOPOGRAPHIC)
SE/4 CAVALIER 15' QUADRANGLE

6581 IV
(BATHGATE 1:62,500)



Maped, edited, and published by the Geological Survey as part of the Department of the Interior program for the development of the Missouri River Basin Control by USGS and USC&GS
Planimetry by photogrammetric methods from aerial photographs taken 1963. Topography by planetable surveys 1964
Polyconic projection. 1927 North American datum 10,000-foot grid based on North Dakota coordinate system, north zone 1000-meter Universal Transverse Mercator grid ticks, zone 14, shown in blue
Fine red dashed lines indicate selected fence and field lines where generally visible on aerial photographs. This information is unchecked



ROAD CLASSIFICATION
Heavy-duty ——— Light-duty ———
Medium-duty ——— Unimproved dirt ———
USGS Historical File Topographic Division
CAVALIER, N. DAK.
SE/4 CAVALIER 15' QUADRANGLE
N4845—W9730/7.5
1964
AMS 6481 I SE—SERIES V871

U.S.G.S.
FILE COPY
TOPOGRAPHIC DIVISION
NOV 2 1965
4125