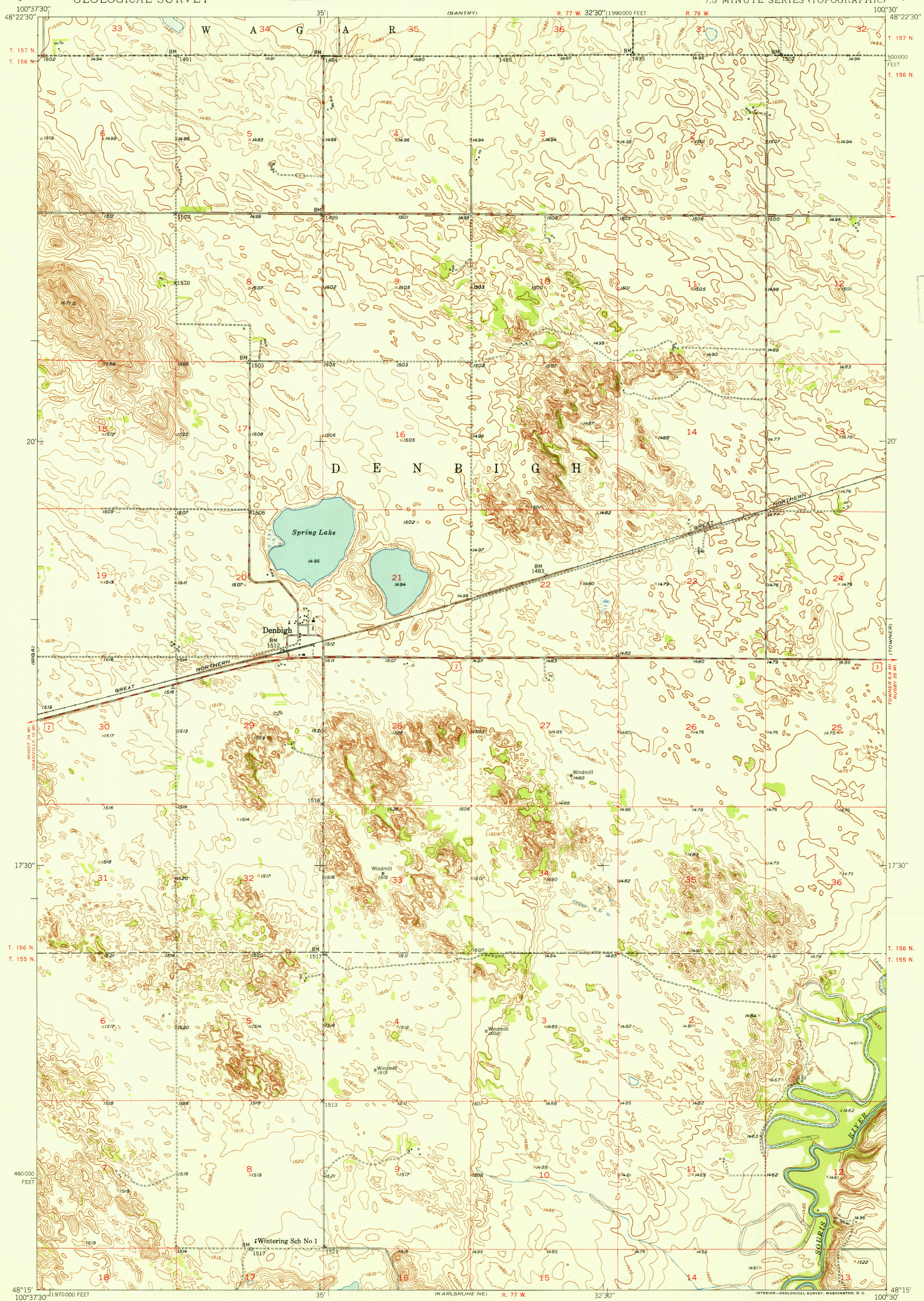


UNITED STATES  
DEPARTMENT OF THE INTERIOR  
GEOLOGICAL SURVEY

U.S.G.S.  
FILE COPY  
Topographic and Mapping

DENBIGH QUADRANGLE  
NORTH DAKOTA-MC HENRY CO.  
7.5 MINUTE SERIES (TOPOGRAPHIC)



Mapped, edited, and published by the Geological Survey  
as part of the Department of the Interior program  
for the development of the Missouri River Basin  
Control by USGS and USC&GS  
Culture and drainage in part compiled from  
aerial photographs taken 1948  
Topography by plane-table methods 1949  
Polyconic projection. 1927 North American datum  
10000-foot grid based on North Dakota coordinate system,  
north zone

TRUE NORTH  
MAGNETIC NORTH  
APPROXIMATE MEAN  
DECLINATION, 1949

SCALE 1:24000  
1 0 1000 2000 3000 4000 5000 6000 7000 FEET  
1 5 0 5 10 KILOMETER  
CONTOUR INTERVAL 5 FEET  
DATUM IS MEAN SEA LEVEL

ROAD CLASSIFICATION  
HARD-SURFACE ALL WEATHER ROADS DRY WEATHER ROADS  
Heavy-duty 4 LANE 16 LANE Improved dirt  
Medium-duty 4 LANE 16 LANE Unimproved dirt  
Loose-surface, graded, or narrow hard-surface  
U. S. Route State Route

DENBIGH, N. DAK.  
N4815-W10030/7.5

EDITION OF 1950

THIS MAP COMPLIES WITH NATIONAL MAP ACCURACY STANDARDS  
FOR SALE BY U. S. GEOLOGICAL SURVEY, FEDERAL CENTER, DENVER, COLORADO OR WASHINGTON 25, D. C.  
A FOLDER DESCRIBING TOPOGRAPHIC MAPS AND SYMBOLS IS AVAILABLE ON REQUEST

U.S.G.S.  
FILE COPY  
Topographic and Mapping

NOV 17 1950 2055