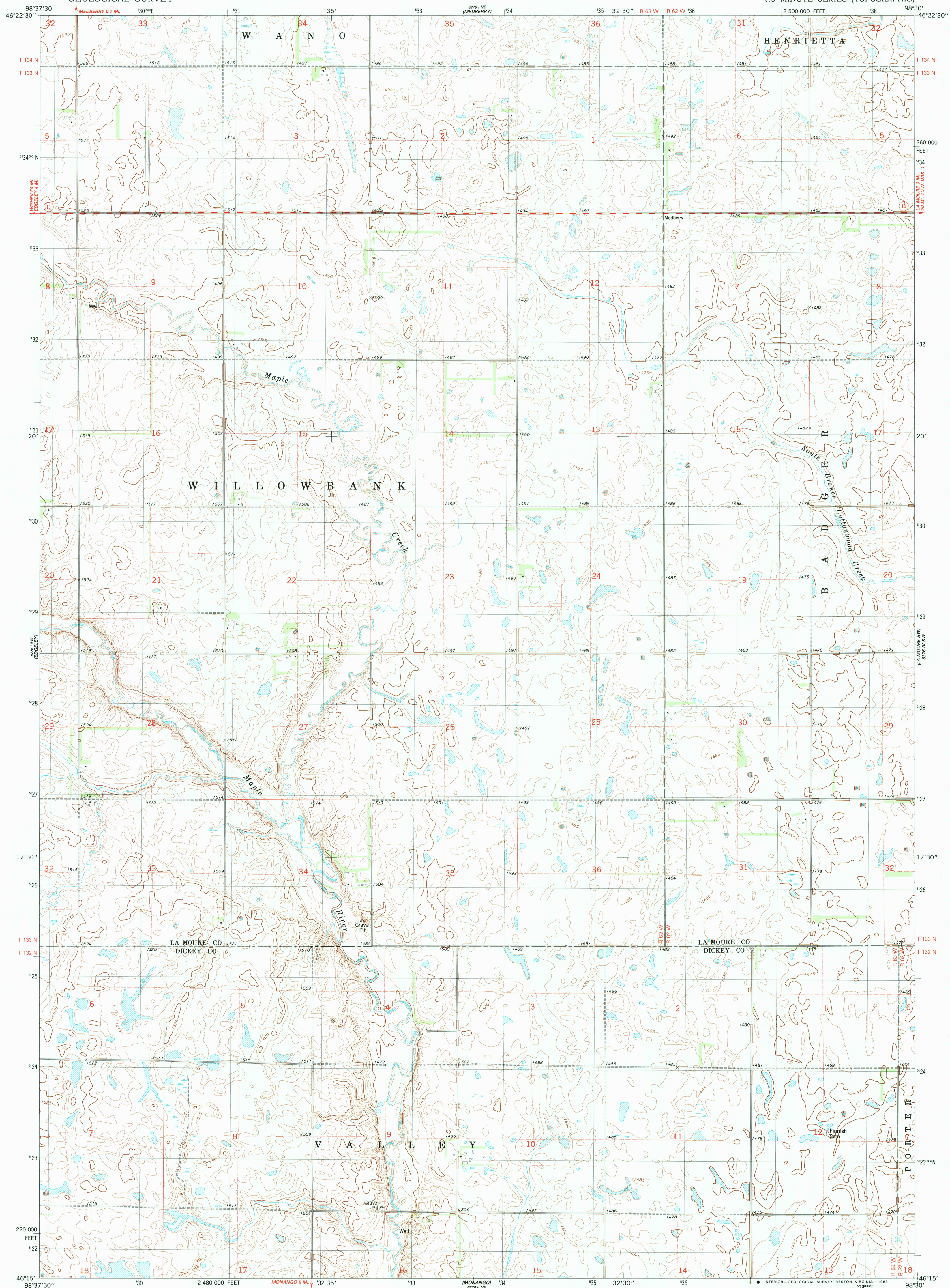


UNITED STATES
DEPARTMENT OF THE INTERIOR
GEOLOGICAL SURVEY

EDGELEY SE QUADRANGLE
NORTH DAKOTA
7.5 MINUTE SERIES (TOPOGRAPHIC)



Mapped, edited, and published by the Geological Survey

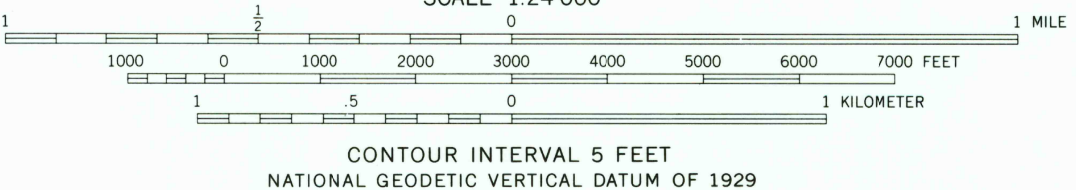
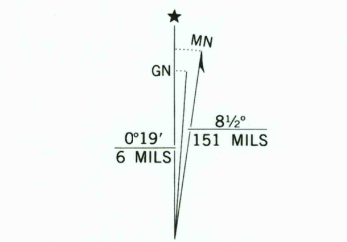
Control by USGS and NOS/NOAA

Topography by photogrammetric methods from aerial photographs taken 1974. Field checked 1977. Map edited 1982

Projection and 10,000-foot grid ticks: North Dakota coordinate system, south zone (Lambert conformal conic)
1000-meter Universal Transverse Mercator grid, zone 14
1927 North American Datum

To place on the predicted North American Datum 1983
move the projection lines 6 meters north and
30 meters east as shown by dashed corner ticks

Fine red dashed lines indicate selected fence and field lines
where generally visible on aerial photographs
This information is unchecked



ROAD CLASSIFICATION	
Primary highway, hard surface	Light-duty road, hard or improved surface
Secondary highway, hard surface	Unimproved road
Interstate Route	U. S. Route
	State Route

EDGELEY SE, N. DAK.
N4615-W9830/7.5

1982

DMA 6276 1 SE-SERIES V87 I

THIS MAP COMPLIES WITH NATIONAL MAP ACCURACY STANDARDS
FOR SALE BY U.S. GEOLOGICAL SURVEY, DENVER, COLORADO 80225, OR RESTON, VIRGINIA 22092
AND STATE WATER COMMISSION, BISMARCK, NORTH DAKOTA 58501
A FOLDER DESCRIBING TOPOGRAPHIC MAPS AND SYMBOLS IS AVAILABLE ON REQUEST

RETURN TO:
U.S. GEOLOGICAL SURVEY