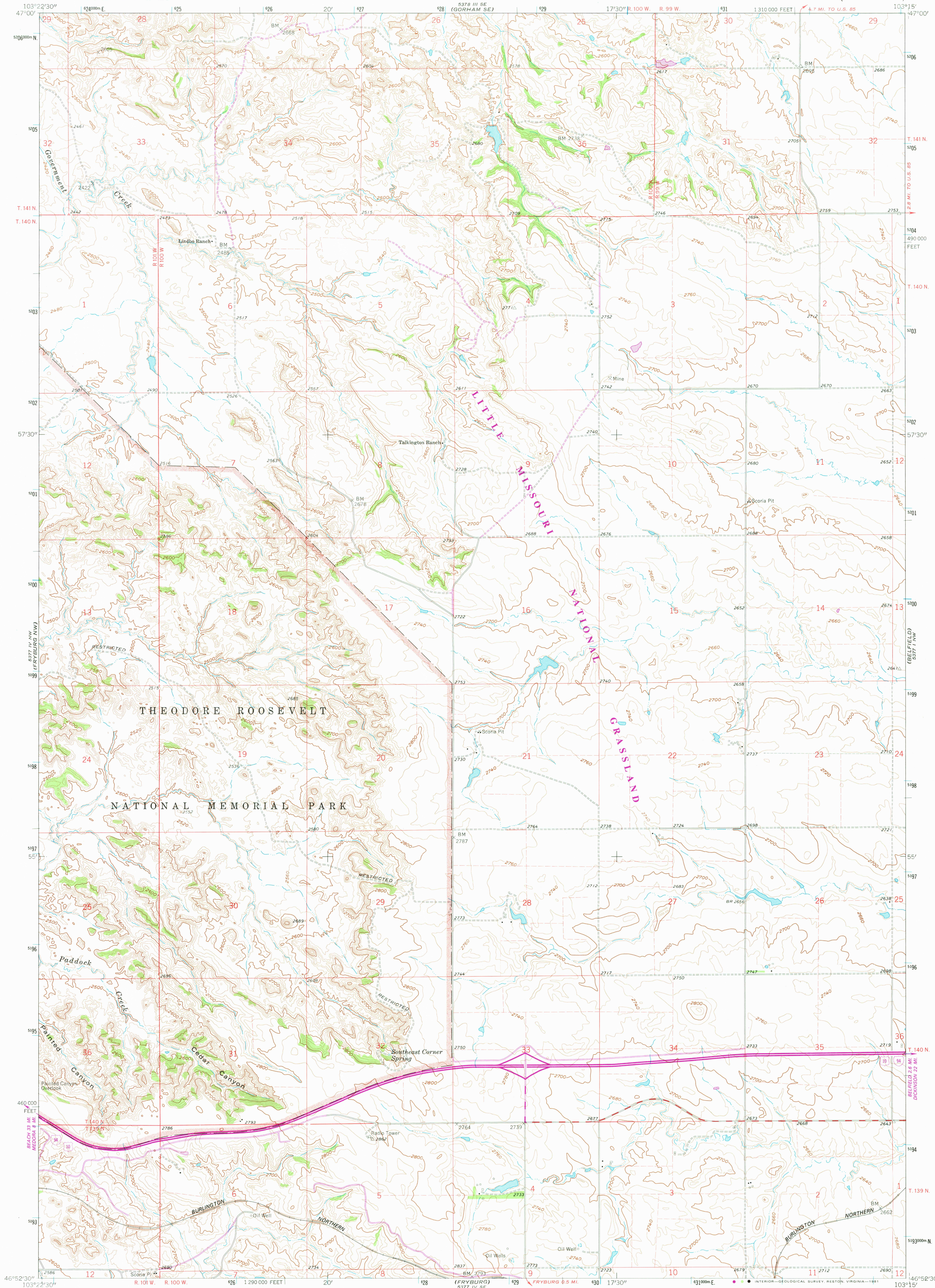


UNITED STATES
DEPARTMENT OF THE INTERIOR
GEOLOGICAL SURVEY

FRYBURG NE QUADRANGLE
NORTH DAKOTA-BILLINGS CO.
7.5 MINUTE SERIES (TOPOGRAPHIC)



Mapped, edited, and published by the Geological Survey
Control by USGS and USCGS

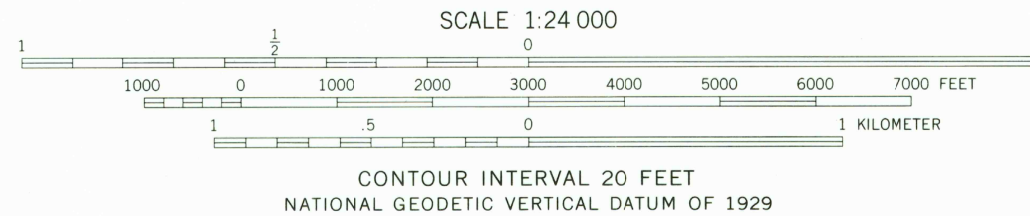
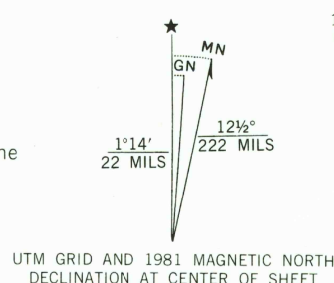
Topography by photogrammetric methods from aerial
photographs taken 1960. Field checked 1962

Polyconic projection. 1927 North American datum
10,000-foot grid based on North Dakota coordinate system, south zone
1000-meter Universal Transverse Mercator grid ticks,
zone 13, shown in blue

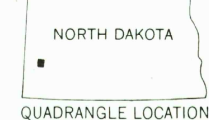
Fine red dashed lines indicate selected fence and field lines where
generally visible on aerial photographs
This information is unchecked

To place on the predicted North American Datum 1983
move the projection lines 4 meters north and
38 meters east as shown by dashed corner ticks

There may be private inholdings within the boundaries of
the National or State reservations shown on this map



THIS MAP COMPLIES WITH NATIONAL MAP ACCURACY STANDARDS
FOR SALE BY U. S. GEOLOGICAL SURVEY, DENVER, COLORADO 80225, OR RESTON, VIRGINIA 22092
AND STATE WATER COMMISSION, BISMARCK, NORTH DAKOTA 58501
A FOLDER DESCRIBING TOPOGRAPHIC MAPS AND SYMBOLS IS AVAILABLE ON REQUEST



ROAD CLASSIFICATION
Heavy-duty ——— Light-duty ———
Medium-duty ——— Unimproved dirt ———
Interstate Route ——— U. S. Route ———

FRYBURG NE, N. DAK.
N4652.5—W10315.7.5

1962
PHOTOREVISED 1981
DMA 5377 IV NE—SERIES 5871

USGS
HISTORICAL FILE
NATIONAL MAPPING DIVISION

JUN 29 1981

2100